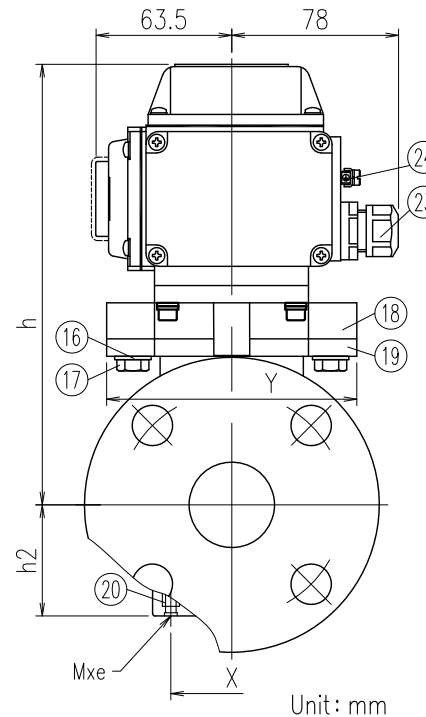
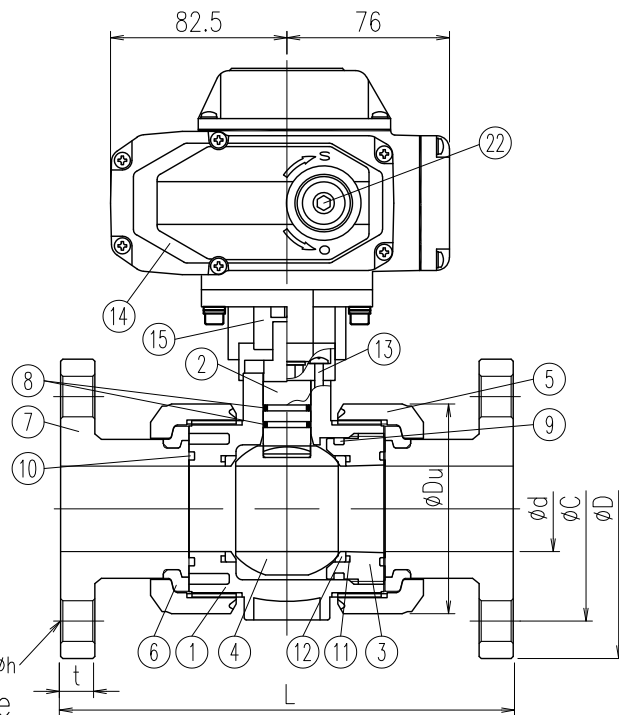


Actuator Specification	EB-Z	EB-05
Rated Torque	9.8N·m	39N·m
Speed	4sec/50Hz 3.3sec/60Hz	15sec/50Hz 12.5sec/60Hz
Motor	8W (Reversible Motor)	
Protection form	Thermal Protector	
Manual operation	Crank handle attached	
Enclosure	Equivalent to P-66	



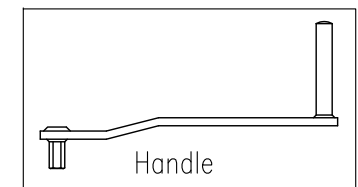
Dimension Table

Size	A(B)	ød	L	Flange												h	h2	øDu	Y	Actuator Type	Fixing Insert Nut	
				JIS10K				ANSI				DIN									X	Mxe
				øD	øC	n-øh	t	øD	øC	n-øh	t	øD	øC	n-øh	t							
<input type="checkbox"/> 15(1/2)	15	143±1.5	95	70	4-15	14	89.0	60.5	4-16	11.5	95	65	4-14	11	163	28	49	68	EB-Z	27	M5x8	
<input type="checkbox"/> 20(3/4)	20	172±1.5	100	75	4-15	14	98.0	70.0	4-16	13.0	105	75	4-14	12	168	32	59	68	EB-Z	32	M5x8	
<input type="checkbox"/> 25(1)	25	187±1.5	125	90	4-19	14	108.0	79.5	4-16	14.5	115	85	4-14	14	179	37	67	86	EB-Z	37	M5x8	
<input type="checkbox"/> 32(1.1/4)	32	190±1.5	135	100	4-19	16	117.5	89.0	4-16	16.0	140	100	4-18	15	186	43	81	86	EB-05	42	M5x8	
<input type="checkbox"/> 40(1.1/2)	40	212±1.5	140	105	4-19	16	127.0	98.5	4-16	17.5	150	110	4-18	16	206	52	98	117	EB-05	57	M6x11	
<input type="checkbox"/> 50(2)	50	234±1.5	155	120	4-19	20	152.0	120.5	4-19	19.5	165	125	4-18	18	212	63	120	117	EB-05	67	M6x11	

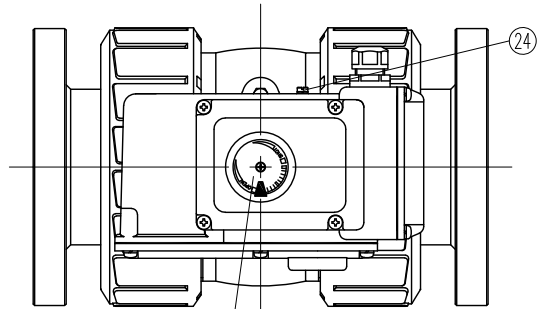
1. Flange dimension is in accordance with the following standard;
JIS B 2220 for JIS10K, ANSI B16.5 for ANSI and DIN2501 PN10/PN16 (ISO7005 PN10) for DIN
2. If a fixing insert bolt is used, it should not be screwed in beyond dimension e.

No.	Part Name	Q'TY	Material
1	Body	1	
2	Stem	1	□PVC
3	Ball holder	1	□HT (JIS: Brown)
4	Ball	1	□CPVC (ANSI-DIN: Gray)
5	Union nut	2	□PP
6	Set ring	2	□PVDF
7	Flange	2	
8	Stem O-ring*1	2	
9	Ball holder O-ring	1	□EPDM
10	Union O-ring	2	□FKM
11	Ball seat O-ring	2	
12	Ball Seat	2	PTFE
13	Screw	4	SUS304
14	Actuator	1	ADC12 (Epoxy Resin Coated)
15	Connector	1	PVC, HT: ZDC3 PP, PVDF: AL
16	Washer	2	SUS304
17	Hexagon Bolt	2	SUS304
18	Upper mount	1	AC4A
19	Lower mount	1	GF-PP
20	Fixing Insert Nut	2	C3601
21	Valve Position Indicator	1	Tempered glass
22	Manual Over Ride Socket	1	S45C
23	Electric wire connector	1	PA, G1/2
24	Earth Terminal *2	1	SS400/Nickel Coated

※1) Stem O-Ring material will be FKM+PTFE in case of Oil Free.
※2) AC200/220V

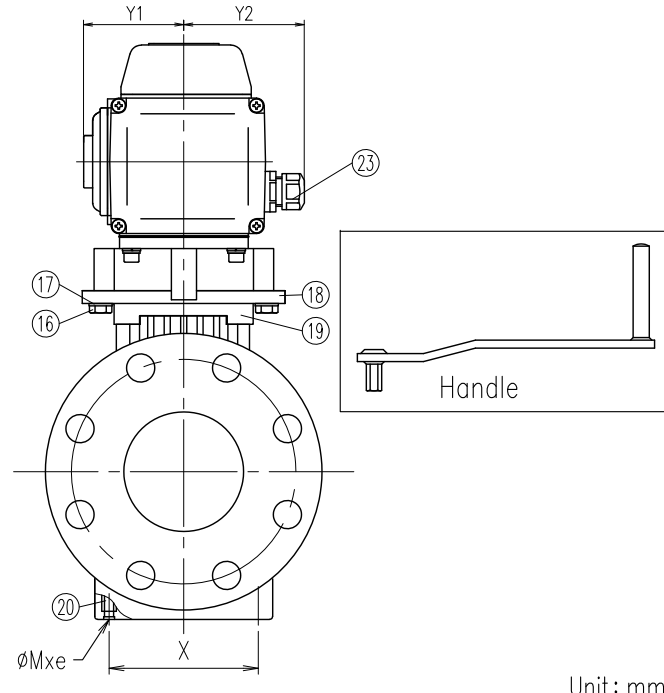
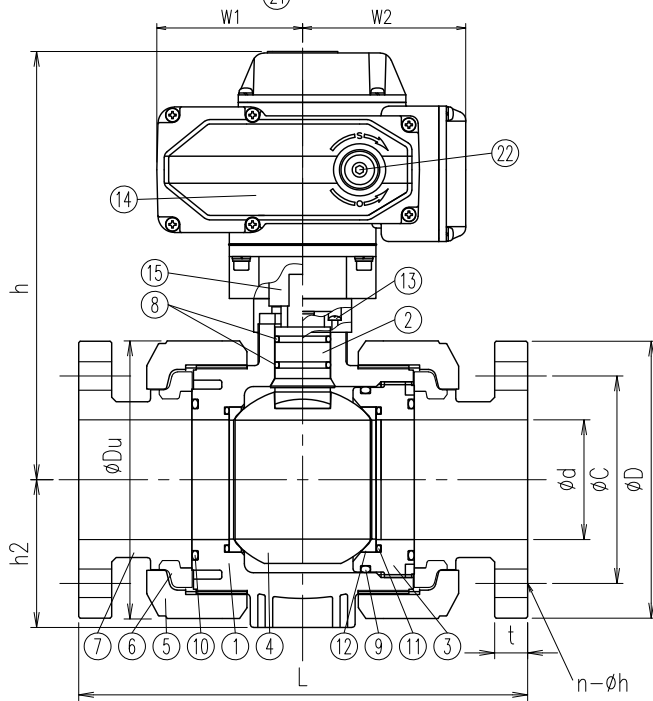


Client name		Date
Flange Standard	<input type="checkbox"/> JIS10K <input type="checkbox"/> ANSI <input type="checkbox"/> DIN	Approved by:
Voltage	<input type="checkbox"/> AC100/110V (50/60Hz) <input type="checkbox"/> AC200/220V (50/60Hz)	
Oil Free	<input type="checkbox"/> YES	
ESLON Electric Ball Valve K-Type Flange Type/15A~50A		
Drawing No.	BVMT1550FXE	
SEKISUI SEKISUI CHEMICAL CO.,LTD.		



Actuator Specification	EB-05	EB-10
Rated Torque	39N·m	98N·m
Speed	15sec/50Hz 12.5sec/60Hz	30sec/50Hz 25sec/60Hz
Motor	8W	20W
	(Reversible Motor)	
Protection form	Thermal Protector	
Manual operation	Crank handle attached	
Enclosure	Equivalent to P-66	

No.	Part Name	Q'TY	Material
1	Body	1	
2	Stem	1	<input type="checkbox"/> PVC
3	Ball holder	1	<input type="checkbox"/> HT (JIS: Brown)
4	Ball	1	<input type="checkbox"/> CPVC (ANSI-DIN: Gray)
5	Union nut	2	<input type="checkbox"/> PP
6	Set ring	2	<input type="checkbox"/> PVDF
7	Flange	2	
8	Stem O-ring*2	2	
9	Ball holder O-ring	1	<input type="checkbox"/> EPDM
10	Union O-ring	2	<input type="checkbox"/> FKM
11	Ball seat O-ring	2	
12	Ball Seat	2	PTFE
13	Screw	4	SUS304
14	Actuator	1	ADC12 (Epoxy Resin Coated)
15	Connector	1	PVC, HT: ZDC3 PP, PVDF: AL
16	Hexagon Bolt	2	SUS304
17	Washer	2	SUS304
18	Yoke	1	AC4A
19	Yoke	1	GF-PP
20	Fixing Insert Nut	2	C3601
21	Valve Position Indicator	1	Tempered glass
22	Manual Over Ride Socket	1	S45C
23	Electric wire connector	1	ZDC/FC, G1/2
24	Earth Terminal *1	1	SS400/Nickel Coated



*1 AC200/220V
*2 Stem O-Ring material will be FKM+PTFE in case of Oil Free

Dimension Table

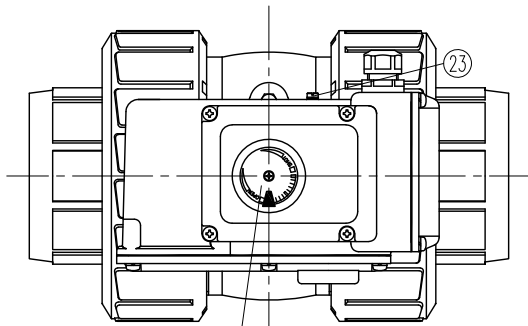
Size	A (B)	φd	L		Flange												h	h2	φDu
					JIS10K				ANSI				DIN						
					PVC,HT	PP,PVDF	φD	φC	n-φh	t	φD	φC	n-φh	t	φD	φC			
<input type="checkbox"/> 65 (2 1/2)	65	259±3.0	257±3.0	175	140	4-19	22	178	139.7	4-20	22.5	185	145	4-18	22	239	81	150	
<input type="checkbox"/> 80 (3)	80	304±3.0	301±3.0	185	150	8-19	22	191	152.4	4-20	24.0	200	160	8-18	23	285	99	186	
<input type="checkbox"/> 100 (4)	100	372±3.0	367±3.0	210	175	8-19	24	229	190.5	8-20	24.0	220	180	8-18	23	316	121	228	

A (B)	W1	W2	Y1	Y2	Actuator Type	Fixing Insert Nut X	Mxe
65 (2 1/2)	82.5	76.0	63.5	78.0	EB-05	81.0	M6x10
80 (3)	97.5	109.0	67.0	80.5	EB-10	99.7	M8x10
100 (4)	97.5	109.0	67.0	80.5	EB-10	119.7	M8x10

Client name		Date
Flange Standard	<input type="checkbox"/> JIS10K <input type="checkbox"/> ANSI <input type="checkbox"/> DIN	Approved by:
Voltage	<input type="checkbox"/> AC100/110V (50/60Hz) <input type="checkbox"/> AC200/220V (50/60Hz)	
Oil Free	<input type="checkbox"/> YES	
ESLON Electric Ball Valve Type K Flange Type/65-100A		
Drawing No.	BVMT651HFXE	

SEKISUI SEKISUI CHEMICAL CO.,LTD.

1. Flange dimension is in accordance with the following standard;JIS B 2220 for JIS10K, ANSI B16.5 for ANSI and DIN EN 1092-1 PN10 for DIN
2. If a fixing insert bolt is used, it should not be screwed in beyond dimension e.

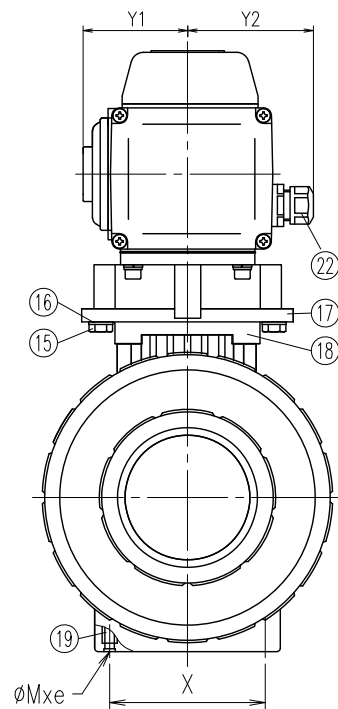
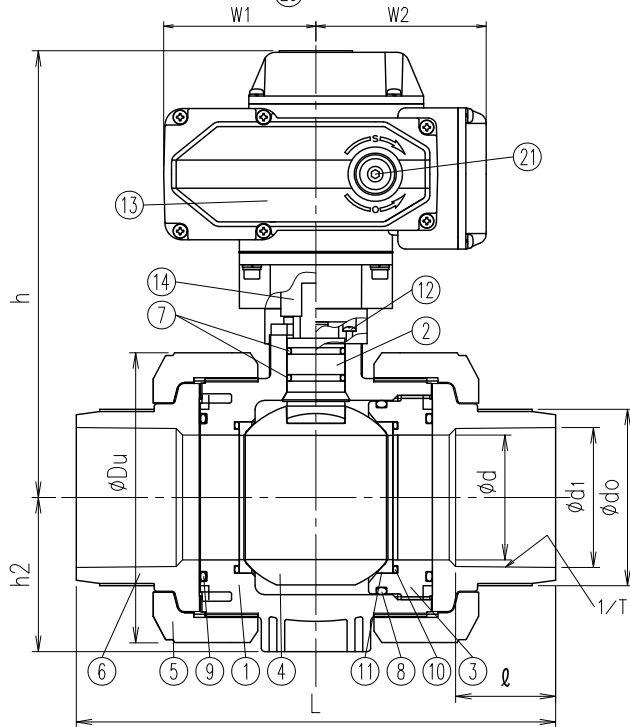


Actuator Specification	EB-05	EB-10
Rated Torque	39N·m	98N·m
Speed	15sec/50Hz 12.5sec/60Hz	30sec/50Hz 25sec/60Hz
Motor	8W	20W
	(Reversible Motor)	
Protection form	Thermal Protector	
Manual operation	Crank handle attached	
Enclosure	Equivalent to P-66	

No.	Part Name	Q'TY	Material	
1	Body	1	□PVC □HT (JIS: Brown) □CPVC (ANSI·DIN: Gray)	
2	Stem	1		
3	Ball holder	1		
4	Ball	1		
5	Union nut	2		
6	TS socket	2		
7	Stem O-ring*2	2		
8	Ball holder O-ring	1		□EPDM □FKM
9	Union O-ring	2		
10	Ball seat O-ring	2		
11	Ball seat	2	PTFE	
12	Screw	4	SUS304	
13	Actuator	1	ADC12 (Epoxy Resin Coated)	
14	Connector	1	ZDC3	
15	Hexagon Bolt	2	SUS304	
16	Washer	2	SUS304	
17	Yoke	1	AC4A	
18	Yoke	1	GF-PP	
19	Fixing Insert Nut	2	C3601	
20	Valve Position Indicator	1	Tempered glass	
21	Manual Over Ride Socket	1	S45C	
22	Electric wire connector	1	ZDC/FC, G1/2	
23	Earth Terminal *1	1	SS400/Nickel Coated	

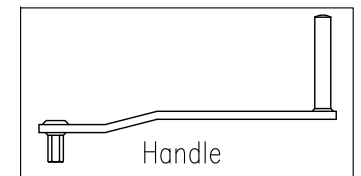
*1 AC200/220V

*2 Stem O-Ring material will be FKM+PTFE in case of Oil Free



Unit: mm

A (B)	Actuator Type	Fixing Insert Nut	
		X	Mxe
65 (2 1/2)	EB-05	81.0	M6x10
80 (3)	EB-10	99.7	M8x10
100 (4)	EB-10	119.7	M8x10



Dimension Table

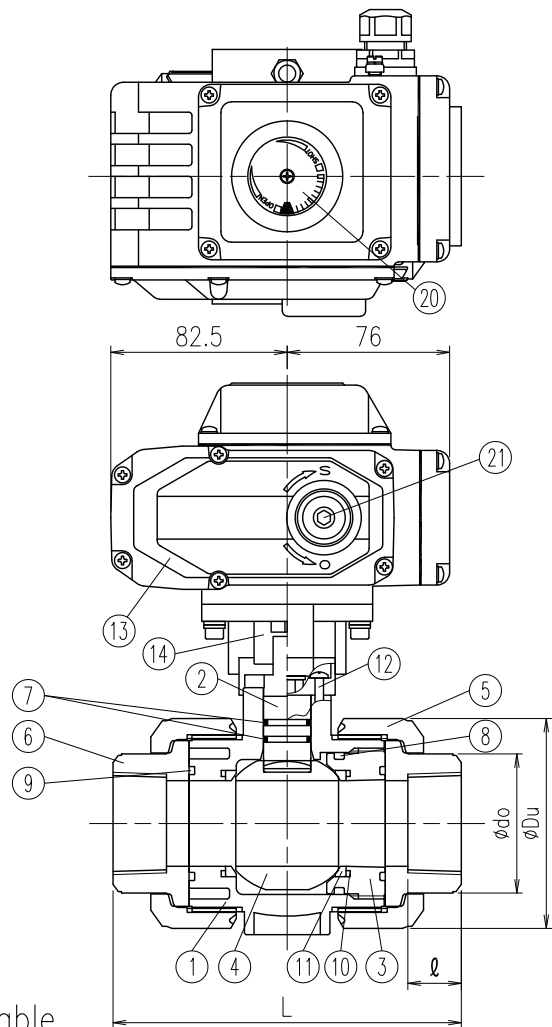
Size	A (B)	φd	TS Socket												h	h2	φDu	W1	W2	Y1	Y2
			L			JIS			ASTM			DIN									
			JIS	ASTM	DIN	φd1	1/T	ℓ	φd1	1/T	ℓ	φd1	1/T	ℓ							
□ 65 (2 1/2)	65	65	259±3.0	211±3.0	211±3.0	76.6	1/48	61	73.38	1/84	44.45	75.3	1/220	44	239	81	150	82.5	76	63.5	78.0
□ 80 (3)	80	80	311±3.0	262±3.0	263±3.0	89.6	1/49	64	89.31	1/78	47.63	90.3	1/255	51	285	99	186	97.5	109	67.0	80.5
□ 100 (4)	100	100	390±3.0	315±3.0	315±3.0	114.7	1/56	84	114.76	1/87	57.15	110.4	1/203	61	316	121	228	97.5	109	67.0	80.5

1. Socket dimension is in accordance with the following standard; ASTM D2467 for ASTM and DIN2501 PN10/PN16 (ISO7005 PN10) for DIN
 2. If a fixing insert bolt is used, it should not be screwed in beyond dimension e.

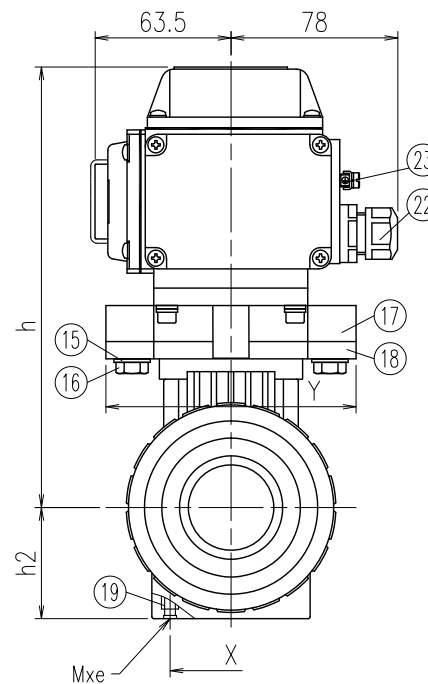
Client name		Date
Socket Standard	□JIS □ASTM □DIN	Approved by:
Voltage	□AC100/110V (50/60Hz) □AC200/220V (50/60Hz)	
Oil Free	□YES	

ESLON
 Electric Ball Valve: K-Type TS Socket/65-100A
 Drawing No. BVT651HSXE

SEKISUI SEKISUI CHEMICAL CO., LTD.

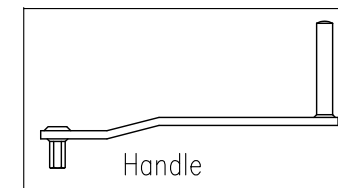


Actuator Specification	EB-Z	EB-05
Rated Torque	9.8N·m	39N·m
Speed	4sec/50Hz 3.3sec/60Hz	15sec/50Hz 12.5sec/60Hz
Motor	8W (Reversible Motor)	
Protection form	Thermal Protector	
Manual operation	Crank handle attached	
Enclosure	Equivalent to P-66	



No.	Part Name	Q'TY	Material/Type
1	Body	1	□PVC □PVDF
2	Stem	1	
3	Ball holder	1	
4	Ball	1	
5	Union nut	2	□EPDM □FKM
6	Threaded socket	2	
7	Stem O-ring*1	2	PTFE
8	Ball holder O-ring	1	
9	Union O-ring	2	
10	Ball seat O-ring	2	SUS304
11	Ball Seat	2	
12	Screw	4	ADC12 (Epoxy Resin Coated)
13	Actuator	1	
14	Connector	1	PVC: ZDC3, PVDF: AL
15	Washer	2	SUS304
16	Hexagon Bolt	2	SUS304
17	Upper mount	1	AC4A
18	Lower mount	1	GF-PP
19	Fixing Insert Nut	2	C3601
20	Valve Position Indicator	1	Tempered glass
21	Manual Over Ride Socket	1	S45C
22	Electric wire connector	1	PA, G1/2
23	Earth Terminal *2	1	SS400/Nickel Coated

※1) Stem O-Ring material will be FKM+PTFE in case of Oil Free.
 ※2) AC200/220V



Dimension Table

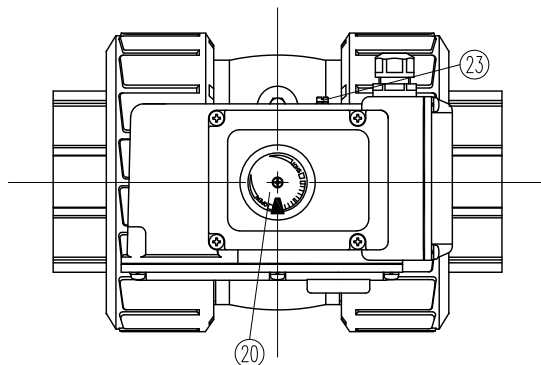
Size	A (B)	φd	L		Thread			ℓ		φdo	h	h2	φDu	Y	Actuator Type	Fixing Insert Nut	
			PVC	PVDF	JIS, DIN (Rc)	ANSI (NPT)	DIN (Rp)	PVC	PVDF							X	Mxe
□ 15 (1/2)	15	15	97±3.0	99±3.0	1/2	1/2	1/2	18	20	30	163	28	49	68	EB-Z	27	M5x8
□ 20 (3/4)	20	20	117±3.0	116±3.0	3/4	3/4	3/4	18	22	35	168	32	59	68	EB-Z	32	M5x8
□ 25 (1)	25	25	128±3.0	136±3.0	1	1	1	23	24	44	179	37	67	86	EB-Z	37	M5x8
□ 32 (1·1/4)	32	32	146±3.0	148±3.0	1·1/4	1·1/4	1·1/4	23	25	54	186	43	81	86	EB-05	42	M5x8
□ 40 (1·1/2)	40	40	163±3.0	169±3.0	1·1/2	1·1/2	1·1/2	25	28	65	206	52	98	117	EB-05	57	M6x11
□ 50 (2)	50	50	188±3.0	196±3.0	2	2	2	30	30	77	212	63	120	117	EB-05	67	M6x11

1. Thread dimension is in accordance with the following standard;
 JIS: JIS B 0203, ANSI: ANSI B1.20.1 and DIN 2501 PN10/PN16 (ISO 7005 PN10) for DIN
2. If a fixing insert bolt is used, it should not be screwed in beyond dimension e.

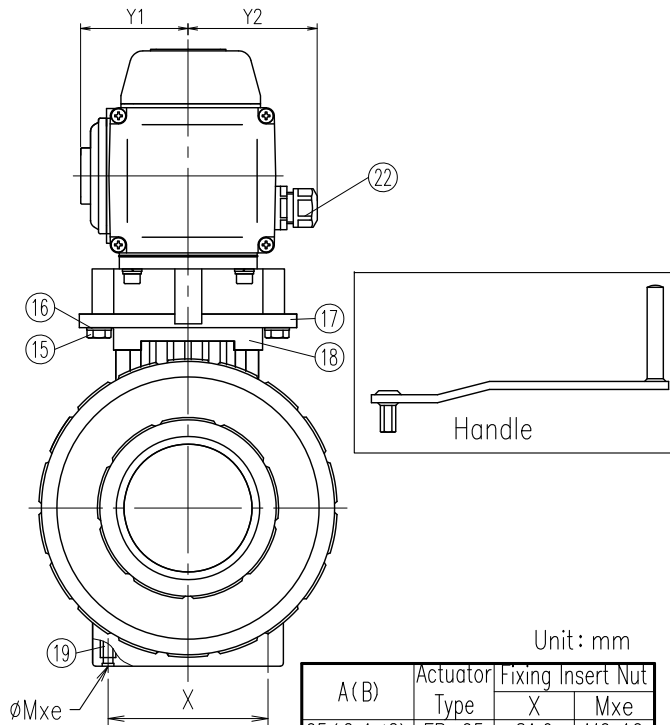
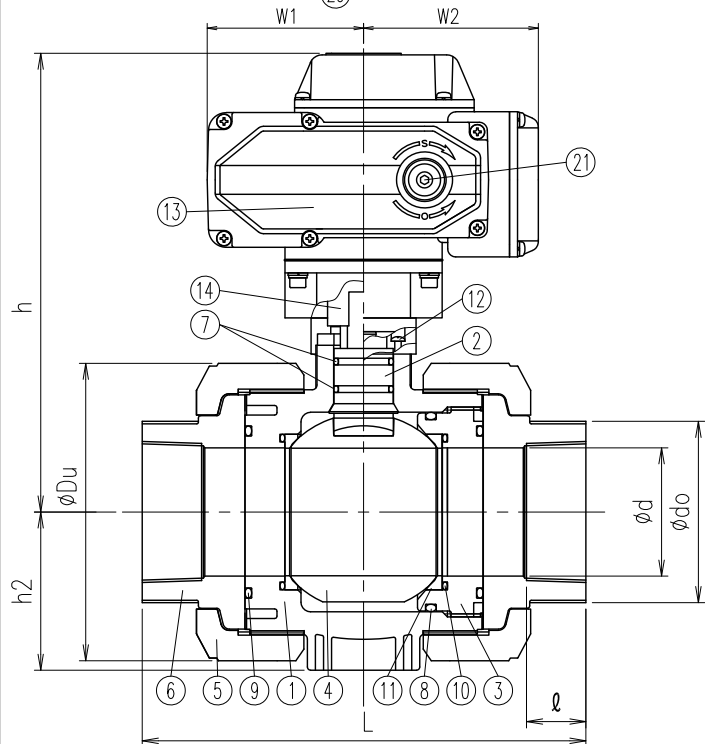
Unit: mm

Client name		Date
Threaded	<input type="checkbox"/> Rc <input type="checkbox"/> NPT <input type="checkbox"/> Rp	Approved by:
Voltage	<input type="checkbox"/> AC100/110V (50/60Hz) <input type="checkbox"/> AC200/220V (50/60Hz)	
Oil Free	<input type="checkbox"/> YES	

ESLON	
Electric Ball Valve: K-Type	
Threaded / 15A~50A	
Drawing No.	BVMT1550NXE
SEKISUI SEKISUI CHEMICAL CO., LTD.	



Actuator Specification	EB-05	EB-10
Rated Torque	39N·m	98N·m
Speed	15sec/50Hz	30sec/50Hz
	12.5sec/60Hz	25sec/60Hz
Motor	8W	20W
	(Reversible Motor)	
Protection form	Thermal Protector	
Manual operation	Crank handle attached	
Enclosure	Equivalent to P-66	



No.	Part Name	Q'TY	Material
1	Body	1	
2	Stem	1	
3	Ball holder	1	<input type="checkbox"/> PVC
4	Ball	1	<input type="checkbox"/> PVDF
5	Union nut	2	
6	Threaded socket	2	
7	Stem O-ring*2	2	
8	Ball holder O-ring	1	<input type="checkbox"/> EPDM
9	Union O-ring	2	<input type="checkbox"/> FKM
10	Ball seat O-ring	2	
11	Ball seat	2	PTFE
12	Screw	4	SUS304
13	Actuator	1	ADC12 (Epoxy Resin Coated)
14	Connector	1	PVC: ZDC3, PVDF: AL
15	Hexagon Bolt	2	SUS304
16	Washer	2	SUS304
17	Yoke	1	AC4A
18	Yoke	1	GF-PP
19	Fixing Insert Nut	2	C3601
20	Valve Position Indicator	1	Tempered glass
21	Manual Over Ride Socket	1	S45C
22	Electric wire connector	1	ZDC/FC, G1/2
23	Earth Terminal *1	1	SS400/Nickel Coated

*1 AC200/220V

*2 Stem O-Ring material will be FKM+PTFE in case of Oil Free

Dimension Table

Size	A (B)	ϕd	Thread						ℓ	ϕdo	h	h2	ϕDu	W1	W2	Y1	Y2
			JIS (Rc), DIN (Rc)		ANSI (NPT)		DIN (Rp)										
			Rc	L	NPT	L	Rp	L									
<input type="checkbox"/>	65 (2 1/2)	65	2 1/2	227±3.0	2 1/2	212±3.0	2 1/2	212±3.0	32	96	239	81	150	82.5	76.0	63.5	78.0
<input type="checkbox"/>	80 (3)	80	3	278±3.0	3	261±3.0	3	261±3.0	37	113	285	99	186	97.5	109.0	67.0	80.5
<input type="checkbox"/>	100 (4)	100	4	330±3.0	4	315±3.0	4	315±3.0	45	144	316	121	228	97.5	109.0	67.0	80.5

1. Thread dimension is in accordance with the following standard;JIS B 0203,ANSI B1.20.1 and DIN2501 PN10/PN16 (ISO7005 PN10) .

2. If a fixing insert bolt is used, it should not be screwed in beyond dimension e.

Client name		Date	
Socket Standard	<input type="checkbox"/> JIS10K <input type="checkbox"/> ANSI <input type="checkbox"/> DIN	Approved by:	
Voltage	<input type="checkbox"/> AC100/110V (50/60Hz) <input type="checkbox"/> AC200/220V (50/60Hz)		
Oil Free	<input type="checkbox"/> YES		

ESLON Electric Ball Valve Type K

Threaded socket/ 65A-100A

Drawing No. BVT651HNXE

SEKISUI SEKISUI CHEMICAL CO.,LTD.