

No.	Part Name	Q'TY	Material/Type	No.	Part Name	Q'TY	Material/Type
17	Screw	1	SUS304	1	Body	1	
18	Yoke	1	SUS304	2	Stem	1	
19	Cover	1	PC	3	Ball Stopper	1	<input type="checkbox"/> PVC
20	Terminal Stand	1	-	4	Ball	1	<input type="checkbox"/> HT
21	Motor	1	-	5	Union Nut	2	<input type="checkbox"/> PP
22	Actuator Base	1	ADC-12	6	Set Ring	2	<input type="checkbox"/> PVDF
23	Micro Switch	2	-	7	Flange	2	
24	Electric Conduit Gland	1	PA	8	Stem O-Ring	15-20A 1	
* Stem O-Ring material will be FKM+PTFE in case of Oil Free.						25-40A 2	
9	Ball Stopper O-Ring	1					<input type="checkbox"/> EPDM
10	Union O-Ring	2					<input type="checkbox"/> FKM
11	Ball Seat O-Ring	2					
12	Ball Seat	2	PTFE				
13	Upper Mount	1	FRP				
14	Lower Mount	1	FRP				
15	Fixing Insert Nut	2	C3601				
16	Connector	1	C3604				

Actuator Specification

Type	AM () -030	AM () -070	AM () -180
Rated Torque	3N·m	7N·m	18N·m
Speed (50/60Hz)	5.4/4.5sec	15.5/13sec	16/13.5sec
Power Required	16VA	16VA	19VA
Voltage	AC100/110V·200/220V		
Motor	Synchronous Motor		
Overload Protection	Thermal Protector		
Ambient Temperature Range	-20~55°C		
Duty Cycle	20% 15min.		
Anti Codensation	Space Heater		
Enclosure	JIS C0920 IP65		
Wiring Conduct	G3/8 (For φ5~φ10 Cable)		

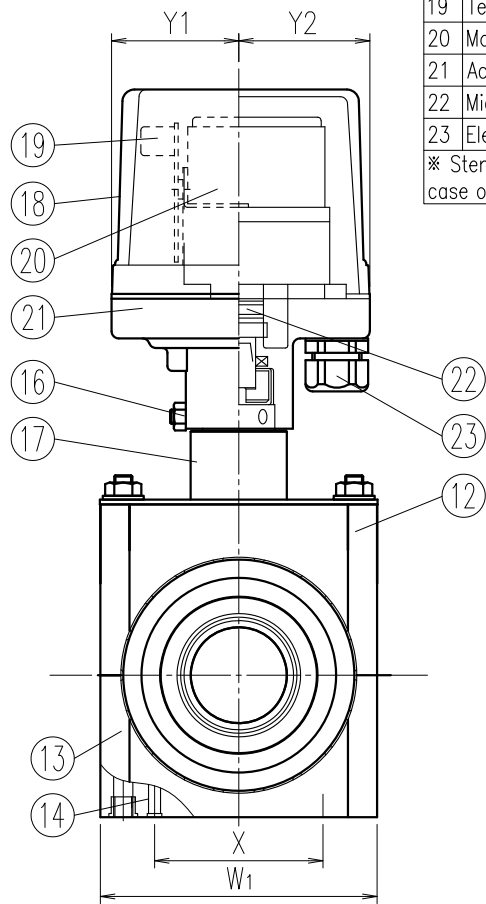
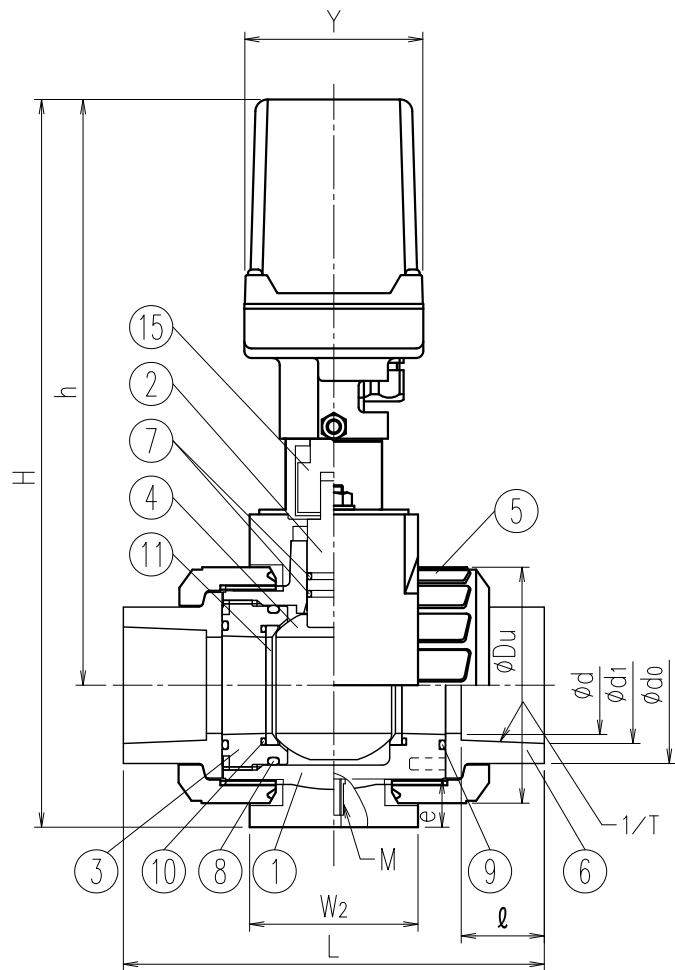
Dimension Table

Unit: mm

Size	A (B)	φd	L	FLANGE												H	h	φDu	Y	Y1	Y2	W1	W2	Actuator Type	Fixing Insert Nut	
				JIS10K				ANSI				DIN													X	Mxe
				φD	φC	n-φh	t	φD	φC	n-φh	t	φD	φC	n-φh	t											
<input type="checkbox"/> 15 (1/2)	15	143±1.5	95	70	4-15	14	89.0	60.5	4-16	11.5	95	65	4-14	11	215	166	49	74	36	71	92	50	AM () -030	50	M6x15	
<input type="checkbox"/> 20 (3/4)	20	172±1.5	100	75	4-15	14	98.0	70.0	4-16	13.0	105	75	4-14	12	220	168	59	74	36	71	92	50	AM () -070	50	M6x15	
<input type="checkbox"/> 25 (1)	25	187±1.5	125	90	4-19	14	108.0	79.5	4-16	14.5	115	85	4-14	14	245	181	67	74	36	71	92	50	AM () -070	50	M6x15	
<input type="checkbox"/> 32 (1·1/4)	32	190±1.5	135	100	4-19	16	117.5	89.0	4-16	16.0	140	100	4-18	15	297	228	81	74	53	54	98	60	AM () -180	55	M6x15	
<input type="checkbox"/> 40 (1·1/2)	40	212±1.5	140	105	4-19	16	127.0	98.5	4-16	17.5	150	110	4-18	16	315	244	98	74	53	54	117	70	AM () -180	70	M8x20	

- Note)
- Flange dimension is in accordance with the following standard; JIS B 2220 for JIS10K, ANSI B16.5 for ANSI and DIN2501 PN10/PN16 (ISO7005 PN10) for DIN
 - If a fixing insert bolt is used, it should not be screwed in beyond dimension e.

Client name		Date
Flange Standard	<input type="checkbox"/> JIS10K <input type="checkbox"/> ANSI <input type="checkbox"/> DIN	Approved by:
Voltage	<input type="checkbox"/> AC100V <input type="checkbox"/> AC200V	
Actuator Type	<input type="checkbox"/> AM1 voltage contact (output) <input type="checkbox"/> AM2 no-voltage contact (output)	
Oil Free	<input type="checkbox"/> YES	
ESLON Electric Ball Valve : N-Type (Standard)		
Flange Type/ 15-40A		
Drawing No.	BVM1540FXE	
SEKISUI SEKISUI CHEMICAL CO., LTD.		



No.	Part Name	Q'TY	Material/Type	No.	Part Name	Q'TY	Material/Type
17	Yoke	1	SUS304	1	Body	1	
18	Cover	1	PC	2	Stem	1	
19	Terminal Stand	1	-	3	Ball Stopper	1	<input type="checkbox"/> PVC
20	Motor	1	-	4	Ball	1	<input type="checkbox"/> HT
21	Actuator Base	1	ADC-12	5	Union Nut	2	
22	Micro Switch	2	-	6	TS Socket	2	
23	Electric Conduit Gland	1	PA	7	Stem O-Ring	15-20A 1	
					*	25-40A 2	
				8	Ball Stopper O-Ring	1	<input type="checkbox"/> EPDM
				9	Union O-Ring	2	<input type="checkbox"/> FKM
				10	Ball Seat O-Ring	2	
				11	Ball Seat	2	PTFE
				12	Upper Mount	1	FRP
				13	Lower Mount	1	FRP
				14	Fixing Insert Nut	2	C3601
				15	Connector	1	C3604
				16	Screw	1	SUS304

* Stem O-Ring material will be FKM+PTFE in case of Oil Free.

Actuator Specification			
Type	AM () -030	AM () -070	AM () -180
Rated Torque	3N·m	7N·m	18N·m
Speed (50/60Hz)	5.4/4.5sec	15.5/13sec	16/13.5sec
Power Required	16VA	16VA	19VA
Voltage	AC100/110V·200/220V		
Motor	Synchronous Motor		
Overload Protection	Thermal Protector		
Ambient Temperature Range	-20~55°C		
Duty Cycle	20% 15min.		
Anti Codensation	Space Heater		
Enclosure	JIS C0920 IP65		
Wiring Conduct	G3/8 (For ø5~ø10 Cable)		

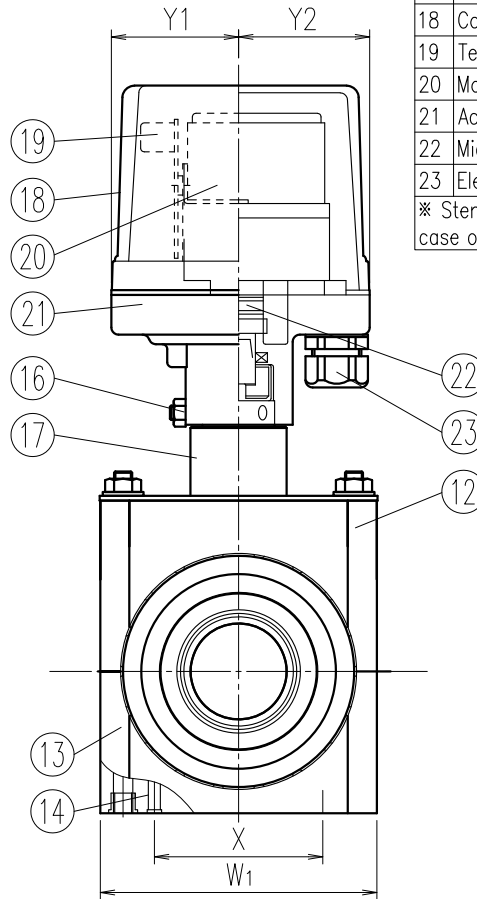
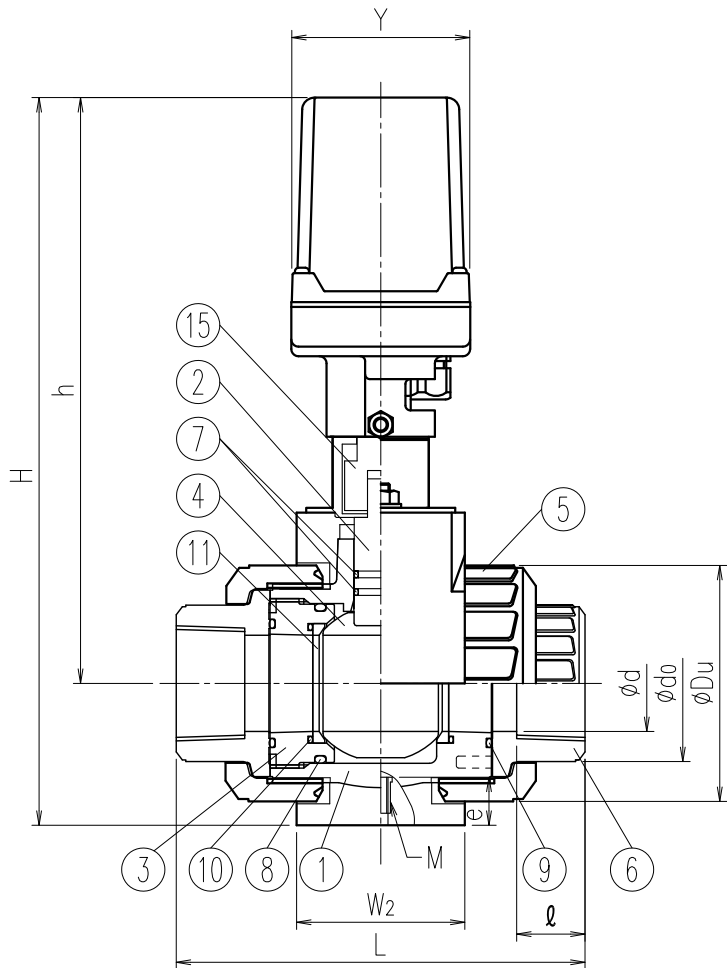
Dimension Table

Size	A (B)	ød	SOCKET												Y	Y1	Y2	ød0	H	h	øDu	W1	W2	Actuator Type	Fixing Insert Nut X1 Mxe
			L			JIS			ASTM			DIN													
			JIS	ASTM	DIN	ød1	1/T	ℓ	ød1	1/T	ℓ	ød1	1/T	ℓ											
<input type="checkbox"/> 15 (1/2)	15	109±3.0	103±3.0	92±3.0	22.3	1/37	22	21.54	1/72	22	20.3	1/65	16	74	36	71	33	196	166	49	92	50	AM () -030	50	M6x15
<input type="checkbox"/> 20 (3/4)	20	132±3.0	119±3.0	107±3.0	26.3	1/42	25	26.87	1/85	25	25.3	1/80	19	74	36	71	35	202	168	59	92	50	AM () -070	50	M6x15
<input type="checkbox"/> 25 (1)	25	143±3.0	133±3.0	121±3.0	32.3	1/43	29	33.65	1/75	29	32.3	1/95	22	74	36	71	44	220	181	67	92	50	AM () -070	50	M6x15
<input type="checkbox"/> 32 (1·1/4)	32	166±3.0	147±3.0	137±3.0	38.4	1/37	32	42.42	1/84	32	40.3	1/115	26	74	53	54	54	277	228	81	98	60	AM () -180	55	M6x15
<input type="checkbox"/> 40 (1·1/2)	40	175±3.0	171±3.0	161±3.0	48.5	1/38	35	48.56	1/78	35	50.3	1/140	31	74	53	54	66	303	244	98	117	70	AM () -180	70	M8x20

Note) 1. Socket dimension is in accordance with the following standard;ASTM D2467 for ASTM and DIN2501 PN10/PN16 (ISO7005 PN10) for DIN
 2. If a fixing insert bolt is used, it should not be screwed in beyond dimension e.

Client name		Date
Socket Standard	<input type="checkbox"/> JIS <input type="checkbox"/> ASTM <input type="checkbox"/> DIN	Approved by:
Voltage	<input type="checkbox"/> AC100V <input type="checkbox"/> AC200V	
Actuator Type	<input type="checkbox"/> AM1 voltage contact (output) <input type="checkbox"/> AM2 no-voltage contact (output)	
Oil Free	<input type="checkbox"/> YES	

ESLON Electric Ball Valve : N-Type (Standard)	
Socket Type/ 15-40A	
Drawing No.	BVM1540SXE
SEKISUI SEKISUI CHEMICAL CO.,LTD.	



No.	Part Name	Q'TY	Material/Type	No.	Part Name	Q'TY	Material/Type
17	Yoke	1	SUS304	1	Body	1	
18	Cover	1	PC	2	Stem	1	
19	Terminal Stand	1	-	3	Ball Stopper	1	<input type="checkbox"/> PVC <input type="checkbox"/> PVDF
20	Motor	1	-	4	Ball	1	
21	Actuator Base	1	ADC-12	5	Union Nut	2	
22	Micro Switch	2	-	6	Thread Socket	2	
23	Electric Conduit Gland	1	PA	7	Stem O-Ring	15-20A 1 25-40A 2	<input type="checkbox"/> EPDM <input type="checkbox"/> FKM
* Stem O-Ring material will be FKM+PTFE in case of Oil Free.							
				8	Ball Stopper O-Ring	1	
				9	Union O-Ring	2	
				10	Ball Seat O-Ring	2	
				11	Ball Seat	2	PTFE
				12	Upper Mount	1	FRP
				13	Lower Mount	1	FRP
				14	Fixing Insert Nut	2	C3601
				15	Connector	1	C3604
				16	Screw	1	SUS304

Actuator Specification			
Type	AM () -030	AM () -070	AM () -180
Rated Torque	3N·m	7N·m	18N·m
Speed (50/60Hz)	5.4/4.5sec	15.5/13sec	16/13.5sec
Power Required	16VA	16VA	19VA
Voltage	AC100/110V·200/220V		
Motor	Synchronous Motor		
Overload Protection	Thermal Protector		
Ambient Temperature Range	-20~55°C		
Duty Cycle	20% 15min.		
Anti Codensation	Space Heater		
Enclosure	JIS C0920 IP65		
Wiring Conduct	G3/8 (For ϕ 5~ ϕ 10 Cable)		

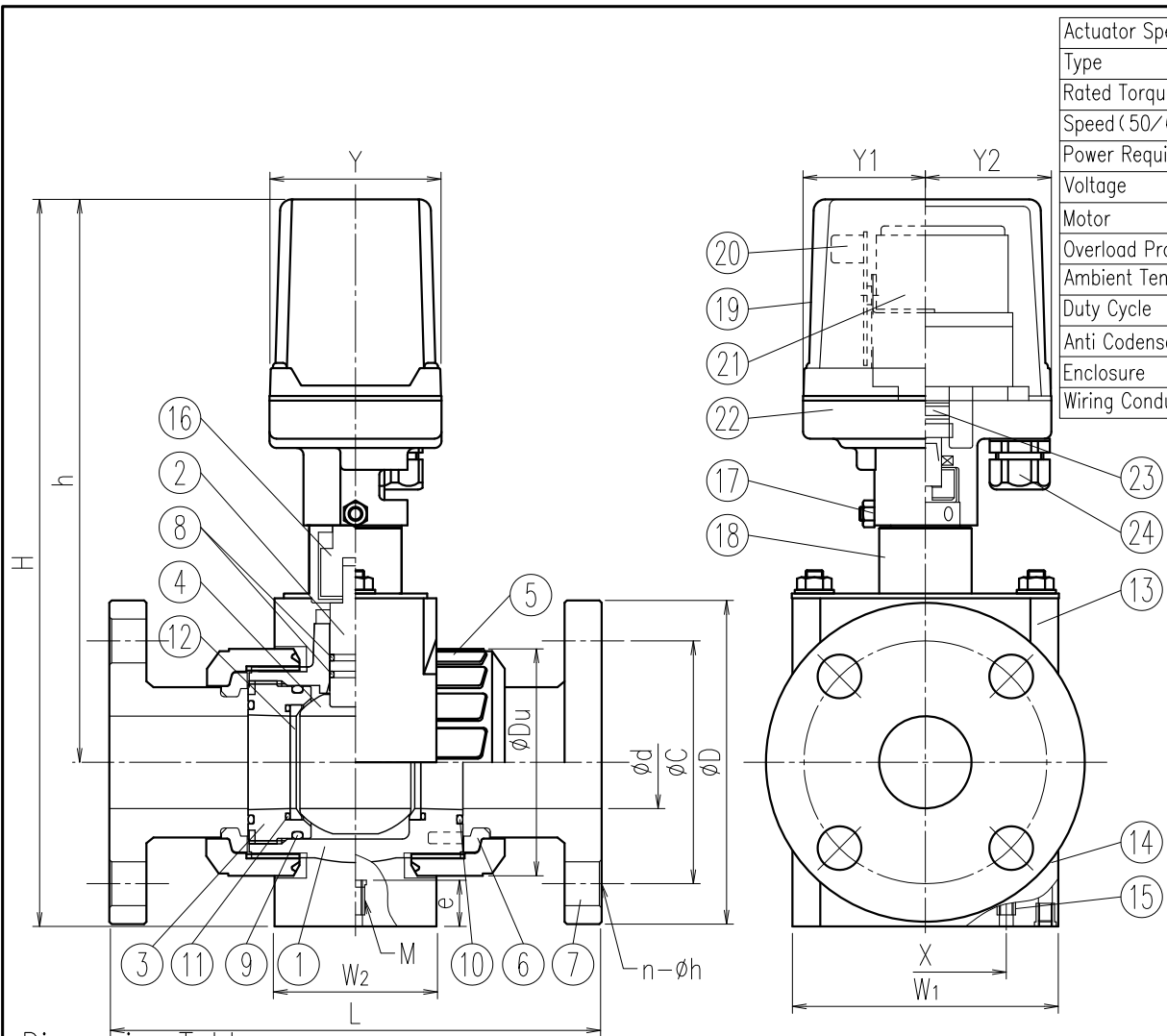
Dimension Table

Unit: mm

Size	A (B)	ϕ d	L		l		Thread			ϕ do	H	h	ϕ Du	Y	Y1	Y2	W1	W2	Actuator Type	Fixing Insert Nut	
							JIS, DIN	ANSI	DIN											X	Mxe
			Rc	NPT	Rp																
<input type="checkbox"/> 15 (1/2)	15	97±3.0	99±3.0	18	20	1/2	1/2	1/2	30	196	166	49	74	36	71	92	50	AM () -030	50	M6x15	
<input type="checkbox"/> 20 (3/4)	20	117±3.0	116±3.0	18	22	3/4	3/4	3/4	35	202	168	59	74	36	71	92	50	AM () -070	50	M6x15	
<input type="checkbox"/> 25 (1)	25	128±3.0	136±3.0	23	24	1	1	1	44	220	181	67	74	36	71	92	50	AM () -070	50	M6x15	
<input type="checkbox"/> 32 (1·1/4)	32	146±3.0	148±3.0	23	25	1.1/4	1.1/4	1.1/4	54	277	228	81	74	53	54	98	60	AM () -180	55	M6x15	
<input type="checkbox"/> 40 (1·1/2)	40	163±3.0	169±3.0	25	28	1.1/2	1.1/2	1.1/2	65	303	244	98	74	53	54	117	70	AM () -180	70	M8x20	

Note) 1. Thread dimension is in accordance with the following standard;
 JIS:JIS B 0203,ANSI:ANSI B1.20.1,DIN:DIN2501 PN10/PN16 (ISO7005 PN10)
 2. If a fixing insert bolt is used, it should not be screwed in beyond dimension e.

Client name		Date
Thread Standard	<input type="checkbox"/> Rc <input type="checkbox"/> NPT <input type="checkbox"/> Rp	Approved by:
Voltage	<input type="checkbox"/> AC100V <input type="checkbox"/> AC200V	
Actuator Type	<input type="checkbox"/> AM1 voltage contact (output) <input type="checkbox"/> AM2 no-voltage contact (output)	
Oil Free	<input type="checkbox"/> YES	
ESLON Electric Ball Valve : N-Type (Standard) Thread Socket Type/ 15-40A		
Drawing No.	BVM1540NXE	
SEKISUI SEKISUI CHEMICAL CO.,LTD.		



Actuator Specification		
Type	AH1-070	AH1-180
Rated Torque	7N·m	18N·m
Speed (50/60Hz)	3/2.5sec	6/5sec
Power Required	50VA	
Voltage	AC100/110V·200/220V	
Motor	Reversible Motor	
Overload Protection	Thermal Protector	
Ambient Temperature Range	-20~55°C	
Duty Cycle	20% 15min.	
Anti Codensation	Space Heater	
Enclosure	JIS C0920 IP65	
Wiring Conduct	For $\phi 5 \sim \phi 10$ Cable	

No.	Part Name	Q'TY	Material/Type
1	Body	1	
2	Stem	1	
3	Ball Stopper	1	<input type="checkbox"/> PVC
4	Ball	1	<input type="checkbox"/> HT <input type="checkbox"/> PP <input type="checkbox"/> PVDF
5	Union Nut	2	
6	Set Ring	2	
7	Flange	2	
8	Stem O-Ring *	15-20A	1
		25-40A	2
9	Ball Stopper O-Ring	1	<input type="checkbox"/> EPDM <input type="checkbox"/> FKM
10	Union O-Ring	2	
11	Ball Seat O-Ring	2	
12	Ball Seat	2	PTFE
13	Upper Mount	1	FRP
14	Lower Mount	1	FRP
15	Fixing Insert Nut	2	C3601
16	Connector	1	C3604
17	Screw	1	SUS304
18	Yoke	1	SUS304
19	Cover	1	PC
20	Terminal Stand	1	-
21	Motor	1	-
22	Actuator Base	1	ADC-12
23	Micro Switch	2	-
24	Electric Conduit Gland	1	PA

* Stem O-Ring material will be FKM+PTFE in case of Oil Free.

Dimension Table

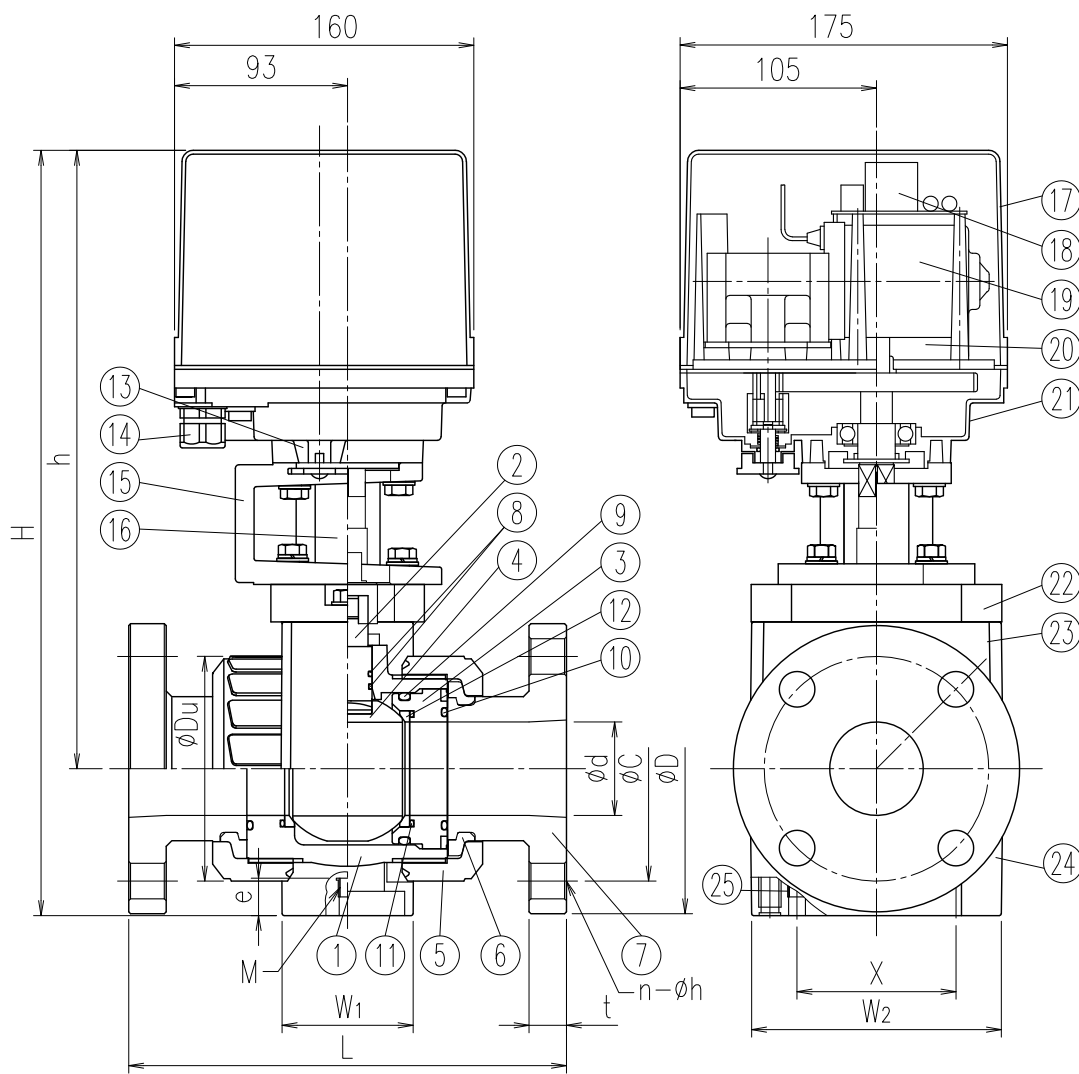
Unit: mm

Size	A (B)	ϕd	L	FLANGE												H	h	ϕDu	Y	Y1	Y2	W1	W2	Actuator Type	Fixing Insert Nut	
				JIS10K				ANSI				DIN													X	Mxe
				ϕD	ϕC	n- ϕh	t	ϕD	ϕC	n- ϕh	t	ϕD	ϕC	n- ϕh	t											
<input type="checkbox"/> 15 (1/2)	15	143±1.5	95	70	4-15	14	89.0	60.5	4-16	11.5	95	65	4-14	11	215	166	49	74	36	71	92	50	AH1-070	50	M6x15	
<input type="checkbox"/> 20 (3/4)	20	172±1.5	100	75	4-15	14	98.0	70.0	4-16	13.0	105	75	4-14	12	220	168	59	74	36	71	92	50	AH1-070	50	M6x15	
<input type="checkbox"/> 25 (1)	25	187±1.5	125	90	4-19	14	108.0	79.5	4-16	14.5	115	85	4-14	14	245	181	67	74	36	71	92	50	AH1-070	50	M6x15	
<input type="checkbox"/> 32 (1·1/4)	32	190±1.5	135	100	4-19	16	117.5	89.0	4-16	16.0	140	100	4-18	15	297	228	81	74	53	54	98	60	AH1-180	55	M6x15	
<input type="checkbox"/> 40 (1·1/2)	40	212±1.5	140	105	4-19	16	127.0	98.5	4-16	17.5	150	110	4-18	16	315	244	98	74	53	54	117	70	AH1-180	70	M8x20	

Note)
 1. Flange dimension is in accordance with the following standard; JIS B 2220 for JIS10K, ANSI B16.5 for ANSI and DIN2501 PN10/PN16 (ISO7005 PN10) for DIN
 2. If a fixing insert bolt is used, it should not be screwed in beyond dimension e.

Client name		Date
Flange Standard	<input type="checkbox"/> JIS10K <input type="checkbox"/> ANSI <input type="checkbox"/> DIN	Approved by:
Voltage	<input type="checkbox"/> AC100V <input type="checkbox"/> AC200V	
Oil Free	<input type="checkbox"/> YES	

ESLON Electric Ball Valve
 N-Type (Higher Speed) Flange Type/ 15-40A
 Drawing No. BVH1540FXE
SEKISUI SEKISUI CHEMICAL CO., LTD.



Actuator Specification	
Type	AD () -300
Rated Torque	30N·m
Speed	3~4sec
Power consumption	AC power supply: 100VA Max. AC power supply: 80VA Max.
Motor	DC Motor
Overload Protection	Thermistor (AD1) 、 Current limiter (AD2)
Manual Operation Mechanism	Manual Clutch Device
Ambient Temperature Range	-20~55℃
Duty Cycle	20% 15min.
Anti Codensation	Space Heater
Enclosure	JIS C0920 IP65
Wiring Conduct	2-G1/2. For ø6~ø12 Cable

No.	Part Name	Q'TY	Material/Type
1	Body	1	
2	Stem	1	
3	Ball Stopper	1	□PVC
4	Ball	1	□HT □PP □PVDF
5	Union Nut	2	□PVDF
6	Set Ring	2	
7	Flange	2	
8	Stem O-Ring	2	
9	Ball Stopper O-Ring	1	□EPDM
10	Union O-Ring	2	□FKM
11	Ball Seat O-Ring	2	
12	Ball Seat	2	PTFE
13	Manual Operation Handle	1	ADC-12
14	Electric Conduit Gland	1	PA
15	Yoke	1	ADC-12
16	Connector	1	S45C
17	Cover	1	ADC-12
18	Terminal Stand	1	-
19	Motor	1	-
20	Micro Switch	2	-
21	Actuator Base	1	ADC-12
22	Spacer	1	PVC
23	Upper Mount	1	FRP
24	Lower Mount	1	FRP
25	Fixing Insert Nut	2	C3603

* Stem O-Ring material will be FKM+PTFE in case of Oil Free.

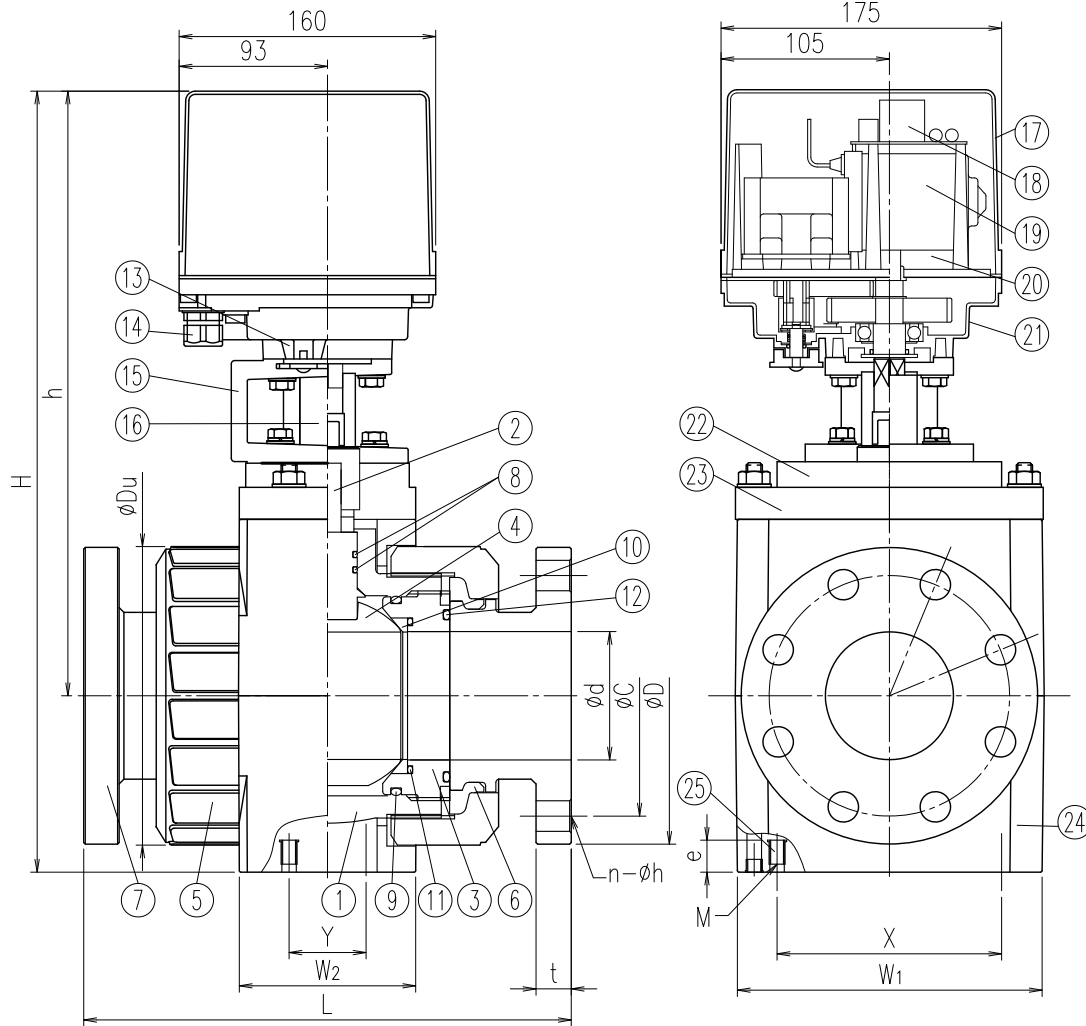
Dimension Table

Size	A (B)	ød	L	FLANGE												H	h	øDu	W1	W2	Actuator Type	Fixing Insert Nut	
				JIS10K				ANSI				DIN										X	Mxe
				øD	øC	n-øh	t	øD	øC	n-øh	t	øD	øC	n-øh	t								
□	50(2)	50	234±1.5	155	120	4-19	20	152.0	120.5	4-19	19.5	165	125	4-18	18	410	331	120	135	70	AD () -300	85	M8x20

Note)
 1. Flange dimension is in accordance with the following standard; JIS B 2220 for JIS10K, ANSI B16.5 for ANSI and DIN2501 PN10/PN16 (ISO7005 PN10) for DIN
 2. If a fixing insert bolt is used, it should not be screwed in beyond dimension e.

Client name		Date
Flange Standard	□JIS10K □ANSI □DIN	Approved by:
Actuator Type	□AD1 voltage contact (output) □AD2 no-voltage contact (output)	
Voltage	□AC100V □AC200V □DC24V (AD2)	
Oil Free	□YES	

ESLON Electric Ball Valve
 N-Type (Higher Speed) Flange Type/50A
 Drawing No. BVD50FXE
SEKISUI SEKISUI CHEMICAL CO.,LTD.



Actuator Specification		
Type	AD () -300	AD () -700
Rated Torque	30N·m	70N·m
Speed	3~4sec	6~10sec
Power consumption	AC power supply: 100VA Max. AC power supply: 80VA Max.	
Motor	DC Motor	
Overload Protection	Thermistor (AD1) Current limiter (AD2)	
Manual Operation Mechanism	Manual Clutch Device	
Ambient Temperature Range	-20~55℃	
Duty Cycle	20% 15min.	
Anti Codensation	Space Heater	
Enclosure	JIS C0920 IP65	
Wiring Conduct	2-G1/2. For φ6~φ12 Cable	

No.	Part Name	Q'TY	Material/Type
1	Body	1	
2	Stem	1	
3	Ball Stopper	2	□PVC
4	Ball	1	□HT □PP □PVDF
5	Union Nut	2	
6	Set Ring	2	
7	Flange	2	
8	Stem O-Ring	2	
9	Ball Stopper O-Ring	2	□EPDM
10	Union O-Ring	2	□FKM
11	Ball Seat O-Ring	2	
12	Ball Seat	2	PTFE
13	Manual Operation Handle	1	ADC-12
14	Electric Conduit Gland	1	PA
15	Yoke	1	ADC-12
16	Connector	1	S45C
17	Cover	1	ADC-12
18	Terminal Stand	1	-
19	Motor	1	-
20	Micro Switch	2	-
21	Actuator Base	1	ADC-12
22	Spacer	1	PVC
23	Upper Mount	1	FRP
24	Lower Mount	1	FRP
25	Fixing Insert Nut	4	C3603

* Stem O-Ring material will be FKM+PTFE in case of Oil Free.

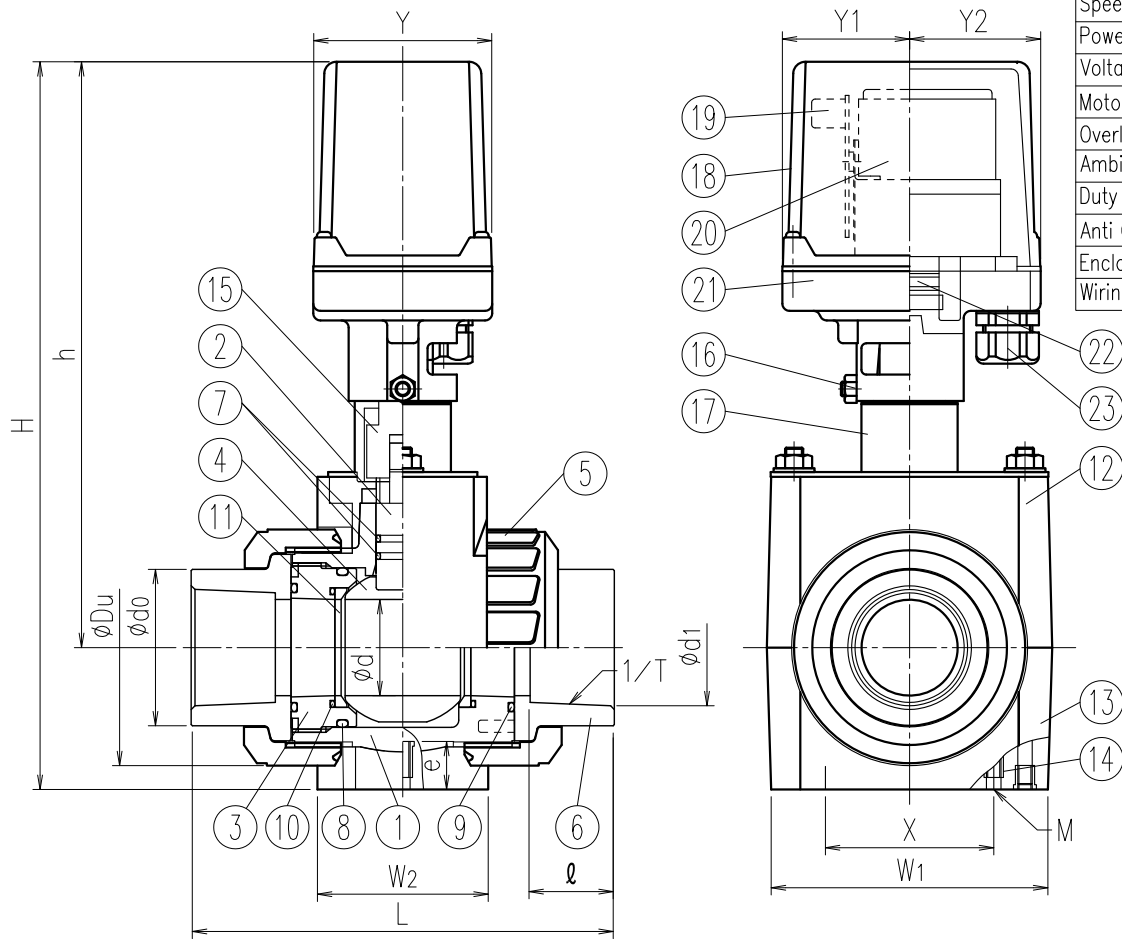
Dimension Table

Size	A (B)	φd	L		Flange												H	h	φDu	W1	W2	Actuator Type	Fixing Insert Nut		
					JIS10K				ANSI				DIN										X	Y	Mxe
					φD	φC	n-φh	t	φD	φC	n-φh	t	φD	φC	n-φh	t									
□ 65 (2 1/2)	65	65	259±1.5	257±1.5	175	140	4-19	22	178	139.7	4-20	22.5	185	145	4-18	22	440	351	150	163	90	AD () -300	115	38	M8x20
□ 80 (3)	80	80	304±1.5	301±1.5	185	150	8-19	22	191	152.4	4-20	24.0	200	160	8-18	23	487	377	186	198	110	AD () -700	140	48	M8x20
□ 100 (4)	100	100	372±1.5	367±1.5	210	175	8-19	24	229	190.5	8-20	24.0	220	180	8-18	23	552	412	228	240	110	AD () -700	180	59	M8x20

Note) 1. Flange dimension is in accordance with the following standard; JIS B 2220 for JIS10K, ANSI B16.5 for ANSI and DIN EN 1092-1 PN10 for DIN
2. If a fixing insert bolt is used, it should not be screwed in beyond dimension e.

Unit : mm

Client name		Date
Flange Standard	□JIS10K □ANSI □DIN	Approved by:
Actuator Type	□AD1 voltage contact (output) □AD2 no-voltage contact (output)	
Voltage	□AC100V □AC200V □DC24V (AD2)	
Oil Free	□YES	
ESLON Electric Ball Valve		
N-Type (Higher Speed) Flange Type/65-100A		
Drawing No.	BVD651HFEXE	
SEKISUI SEKISUI CHEMICAL CO., LTD.		



Actuator Specification		
Type	AH1-070	AH1-180
Rated Torque	7N·m	18N·m
Speed (50/60Hz)	3/2.5sec	6/5sec
Power Required	50VA	
Voltage	AC100/110V·200/220V	
Motor	Reversible Motor	
Overload Protection	Thermal Protector	
Ambient Temperature Range	-20~55°C	
Duty Cycle	20% 15min.	
Anti Codensation	Space Heater	
Enclosure	JIS C0920 IP65	
Wiring Conduct	For φ5~φ10 Cable	

No.	Part Name	Q'TY	Material/Type
1	Body	1	
2	Stem	1	
3	Ball Stopper	1	□PVC
4	Ball	1	□HT
5	Union Nut	2	
6	TS Socket	2	
7	Stem O-Ring	15-20A 1 25-40A 2	
8	Ball Stopper O-Ring	1	□EPDM
9	Union O-Ring	2	□FKM
10	Ball Seat O-Ring	2	
11	Ball Seat	2	PTFE
12	Upper Mount	1	FRP
13	Lower Mount	1	FRP
14	Fixing Insert Nut	2	C3601
15	Connector	1	C3604
16	Screw	1	SUS304
17	Yoke	1	SUS304
18	Cover	1	PC
19	Terminal Stand	1	-
20	Motor	1	-
21	Actuator Base	1	ADC-12
22	Micro Switch	2	-
23	Electric Conduit Gland	1	PA

※ Stem O-Ring material will be FKM+PTFE in case of Oil Free.

Dimension Table

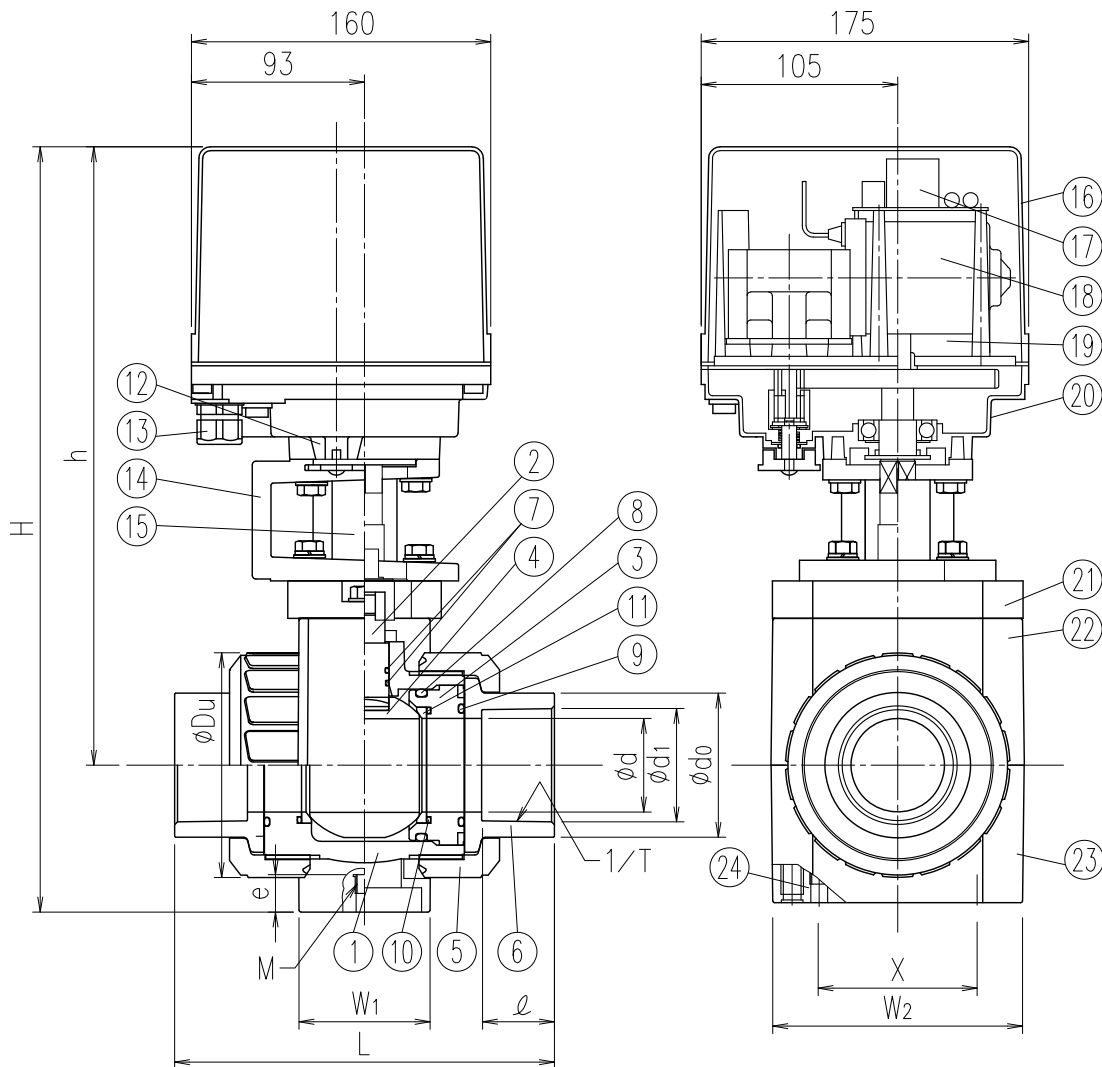
Size	A(B)	φd	SOCKET												Y	Y1	Y2	φdo	H	h	φDu	W1	W2	Actuator Type	Fixing Insert Nut
			L			JIS			ASTM			DIN													
			JIS	ASTM	DIN	φd1	1/T	ℓ	φd1	1/T	ℓ	φd1	1/T	ℓ											
□ 15(1/2)	15	109±3.0	103±3.0	92±3.0	22.3	1/37	22	21.54	1/72	22	20.3	1/65	16	74	36	71	33	223	193	49	92	50	AH1-070	50 M6x15	
□ 20(3/4)	20	132±3.0	119±3.0	107±3.0	26.3	1/42	25	26.87	1/85	25	25.3	1/80	19	74	36	71	35	229	195	59	92	50	AH1-070	50 M6x15	
□ 25(1)	25	143±3.0	133±3.0	121±3.0	32.3	1/43	29	33.65	1/75	29	32.3	1/95	22	74	36	71	44	247	208	67	92	50	AH1-070	50 M6x15	
□ 32(1·1/4)	32	166±3.0	147±3.0	137±3.0	38.4	1/37	32	42.42	1/84	32	40.3	1/115	26	74	53	54	54	277	228	81	98	60	AH1-180	55 M6x15	
□ 40(1·1/2)	40	175±3.0	171±3.0	161±3.0	48.5	1/38	35	48.56	1/78	35	50.3	1/140	31	74	53	54	66	303	244	98	117	70	AH1-180	70 M8x20	

Note) 1. Socket dimension is in accordance with the following standard;ASTM D2467 for ASTM and DIN2501 PN10/PN16 (ISO7005 PN10) for DIN
2. If a fixing insert bolt is used, it should not be screwed in beyond dimension e.

Unit: mm

Client name	Date
Socket Standard	□JIS □ASTM □DIN
Voltage	□AC100V □AC200V
Oil Free	□YES

ESLON Electric Ball Valve	
N-Type (Higher Speed) Socket Type/ 15-40A	
Drawing No.	BVH1540SXE
SEKISUI SEKISUI CHEMICAL CO.,LTD.	



Actuator Specification	
Type	AD () -300
Rated Torque	30N·m
Speed	3~4sec
Power consumption	AC power supply: 100VA Max. AC power supply: 80VA Max.
Motor	DC Motor
Overload Protection	Thermistor (AD1)、Current limiter (AD2)
Manual Operation Mechanism	Manual Clutch Device
Ambient Temperature Range	-20~55℃
Duty Cycle	20% 15min.
Anti Codensation	Space Heater
Enclosure	JIS C0920 IP65
Wiring Conduct	2-G1/2. For φ6~φ12 Cable

No.	Part Name	Q'TY	Material/Type
1	Body	1	
2	Stem	1	
3	Ball Stopper	1	□PVC
4	Ball	1	□PVDF
5	Union Nut	2	
6	TS Socket	2	
7	Stem O-Ring	2	
8	Ball Stopper O-Ring	1	□EPDM
9	Union O-Ring	2	□FKM
10	Ball Seat O-Ring	2	
11	Ball Seat	2	PTFE
12	Manual Operation Handle	1	ADC-12
13	Electric Conduit Gland	1	PA
14	Yoke	1	ADC-12
15	Connector	1	S45C
16	Cover	1	ADC-12
17	Terminal Stand	1	-
18	Motor	1	-
19	Micro Switch	2	-
20	Actuator Base	1	ADC-12
21	Spacer	1	PVC
22	Upper Mount	1	FRP
23	Lower Mount	1	FRP
24	Fixing Insert Nut	2	C3603

* Stem O-Ring material will be FKM+PTFE in case of Oil Free.

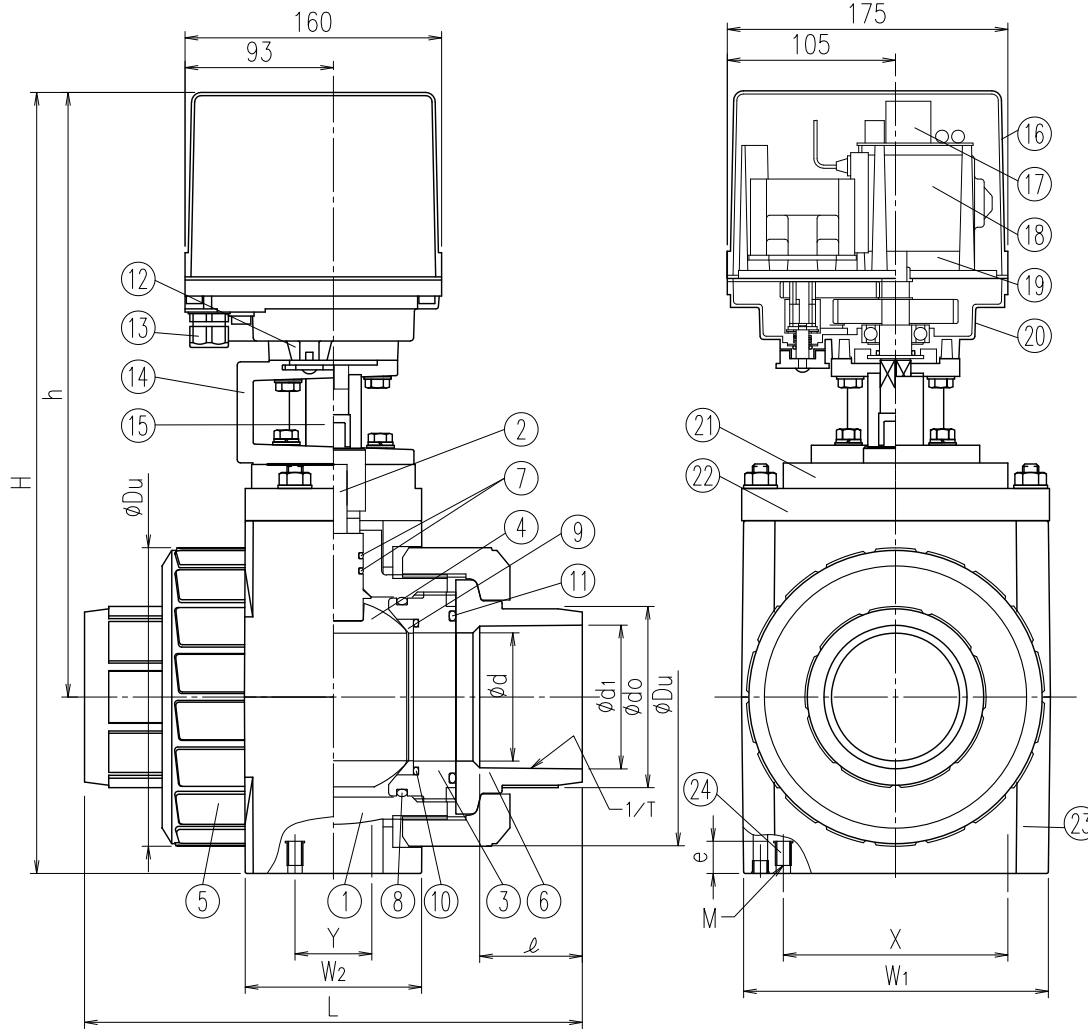
Dimension Table

SIZE	A (B)	φd	SOCKET												φdo	H	h	φDu	W1	W2	Actuator Type	Fixing Insert Nut	
			L			JIS			ASTM			DIN										X	Mxe
			JIS	ASTM	DIN	φd1	1/T	ℓ	φd1	1/T	ℓ	φd1	1/T	ℓ									
□ 50 (2)	50	203±3.0	188±3.0	189±3.0	60.7	1/34	38	60.63	1/83	38	63.3	1/175	38	77	405	331	120	135	70	AD () -300	85	M8x20	

Note) 1. Socket dimension is in accordance with the following standard;ASTM D2467 for ASTM and DIN2501 PN10/PN16 (ISO7005 PN10) for DIN
 2. If a fixing insert bolt is used, it should not be screwed in beyond dimension e.

Unit: mm

Client name		Date
Socket Standard	□JIS □ASTM □DIN	Approved by:
Actuator Type	□AD1 voltage contact (output) □AD2 no-voltage contact (output)	
Voltage	□AC100V □AC200V □DC24V (AD2)	
Oil Free	□YES	
ESLON Electric Ball Valve N-Type (Higher Speed) Socket Type/50A		
Drawing No.	BVD50SXE	
SEKISUI SEKISUI CHEMICAL CO.,LTD.		



Actuator Specification		
Type	AD () -300	AD () -700
Rated Torque	30N·m	70N·m
Speed	3~4sec	6~10sec
Power consumption	AC power supply: 100VA Max. AC power supply: 80VA Max.	
Motor	DC Motor	
Overload Protection	Thermistor (AD1) Current limiter (AD2)	
Manual Operation Mechanism	Manual Clutch Device	
Ambient Temperature Range	-20~55℃	
Duty Cycle	20% 15min.	
Anti Codensation	Space Heater	
Enclosure	JIS C0920 IP65	
Wiring Conduct	2-G1/2. For φ6~φ12 Cable	

No.	Part Name	Q'TY	Material/Type
1	Body	1	
2	Stem	1	
3	Ball Stopper	2	□PVC
4	Ball	1	□HT
5	Union Nut	2	
6	TS Socket	2	
7	Stem O-Ring	2	
8	Ball Stopper O-Ring	2	□EPDM
9	Union O-Ring	2	□FKM
10	Ball Seat O-Ring	2	
11	Ball Seat	2	PTFE
12	Manual Operation Handle	1	ADC-12
13	Electric Conduit Gland	1	PA
14	Yoke	1	ADC-12
15	Connector	1	S45C
16	Cover	1	ADC-12
17	Terminal Stand	1	-
18	Motor	1	-
19	Micro Switch	2	-
20	Actuator Base	1	ADC-12
21	Spacer	1	PVC
22	Upper Mount	1	FRP
23	Lower Mount	1	FRP
24	Fixing Insert Nut	4	C3603

* Stem O-Ring material will be FKM+PTFE in case of Oil Free.

Dimension Table

Size	A (B)	φd	L															φdo	H	h	φDu	W1	W2	Actuator Type	Fixing Insert Nut		
			TS Socket												X	Y	Mxe										
			JIS			ASTM			DIN																		
□ 65 (2 1/2)	65	259±3.0	211±3.0	211±3.0	76.6	1/48	61	73.38	1/84	44.45	75.3	1/220	44	96	440	351	150	163	90	AH () -300	115	38	M8x10				
□ 80 (3)	80	311±3.0	262±3.0	263±3.0	89.6	1/49	64	89.31	1/78	47.63	90.3	1/255	51	113	487	377	186	198	110	AH () -700	140	48	M8x10				
□ 100 (4)	100	390±3.0	315±3.0	315±3.0	114.7	1/56	84	114.76	1/87	57.15	110.4	1/203	61	144	552	412	228	240	110	AH () -700	180	59	M8x10				

Unit: mm

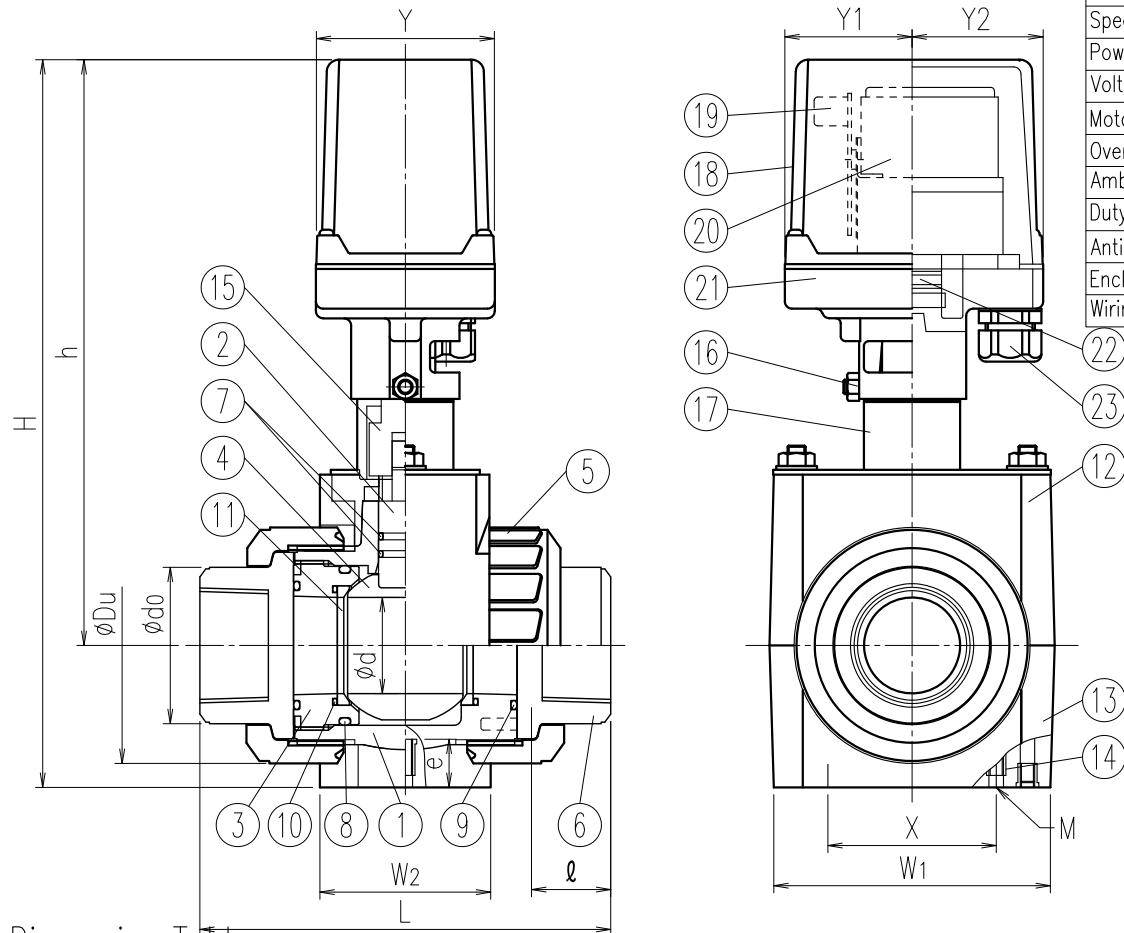
Note) 1. Socket dimension is in accordance with the following standard; ASTM D2467 for ASTM and DIN2501 PN10/PN16 (ISO7005 PN10) for DIN.
2. If a fixing insert bolt is used, it should not be screwed in beyond dimension e.

Client name		Date
Socket Standard	□JIS □ASTM □DIN	Approved by:
Actuator Type	□AD1 voltage contact (output) □AD2 no-voltage contact (output)	
Voltage	□AC100V □AC200V □DC24V (AD2)	
Oil Free	□YES	
ESLON Electric Ball Valve		
N-Type (Higher Speed) Socket Type/65-100A		
Drawing No.	BVD651HSXE	
SEKISUI SEKISUI CHEMICAL CO., LTD.		

Actuator Specification		
Type	AH1-070	AH1-180
Rated Torque	7N·m	18N·m
Speed (50/60Hz)	3/2.5sec	6/5sec
Power Required	50VA	
Voltage	AC100/110V·200/220V	
Motor	Reversible Motor	
Overload Protection	Thermal Protector	
Ambient Temperature Range	-20~55℃	
Duty Cycle	20% 15min.	
Anti Codensation	Space Heater	
Enclosure	JIS C0920 IP65	
Wiring Conduct	For $\phi 5\sim\phi 10$ Cable	

No.	Part Name	Q'TY	Material/Type
1	Body	1	
2	Stem	1	
3	Ball Stopper	1	<input type="checkbox"/> PVC
4	Ball	1	<input type="checkbox"/> HT
5	Union Nut	2	
6	Thread Socket	2	
7	Stem O-Ring	15-20A 1 25-40A 2	<input type="checkbox"/> EPDM <input type="checkbox"/> FKM
8	Ball Stopper O-Ring	1	
9	Union O-Ring	2	
10	Ball Seat O-Ring	2	
11	Ball Seat	2	PTFE
12	Upper Mount	1	FRP
13	Lower Mount	1	FRP
14	Fixing Insert Nut	2	C3601
15	Connector	1	C3604
16	Screw	1	SUS304
17	Yoke	1	SUS304
18	Cover	1	PC
19	Terminal Stand	1	-
20	Motor	1	-
21	Actuator Base	1	ADC-12
22	Micro Switch	2	-
23	Electric Conduit Gland	1	PA

* Stem O-Ring material will be FKM+PTFE in case of Oil Free.



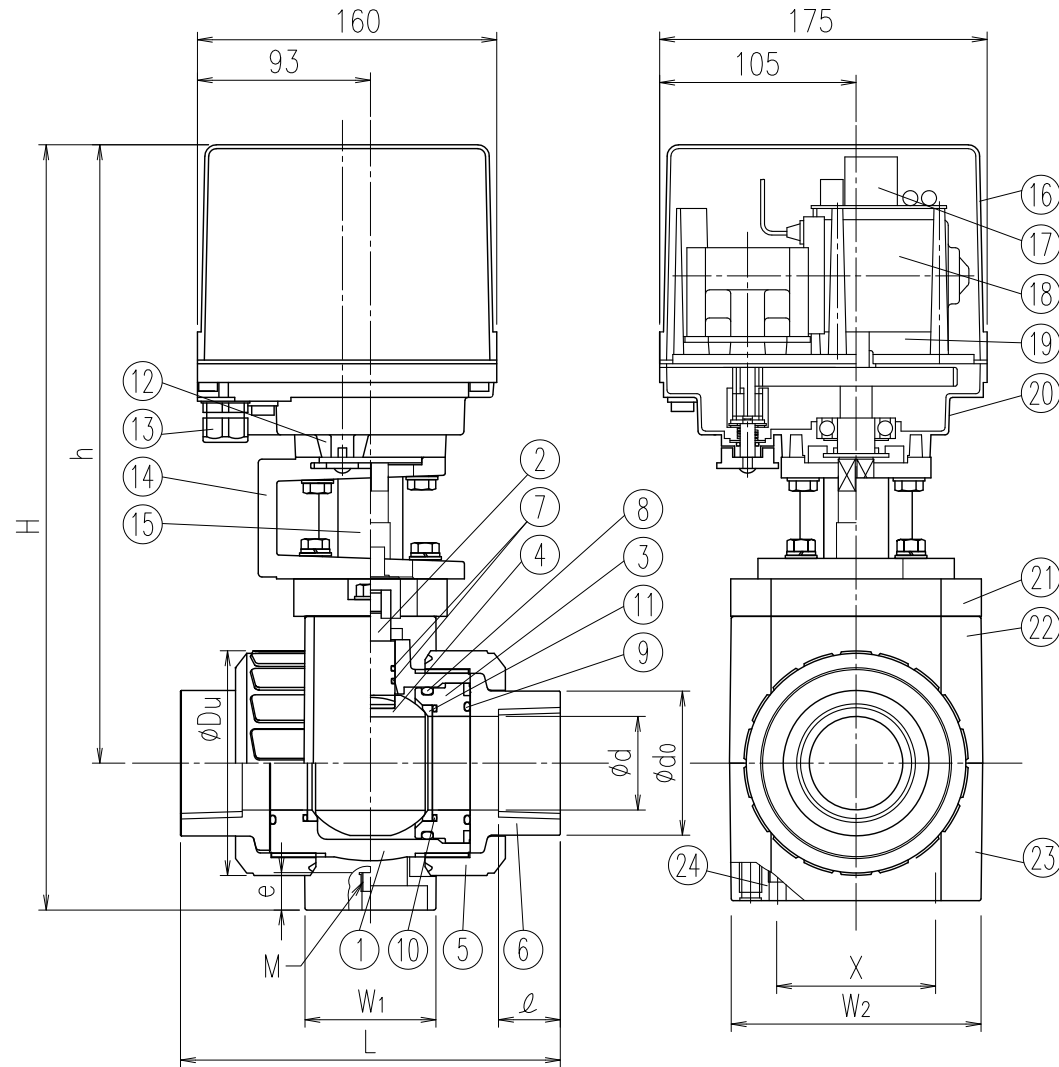
Dimension Table

Unit: mm

Size	A(B)	ϕd	L				Thread			ϕdo	H	h	ϕDu	Y	Y1	Y2	W1	W2	Actuator Type	Fixing Insert Nut	
			PVC	PVDF	PVC	PVDF	JIS. DIN	ANSI	DIN											X	Mxe
			Rc	NPT	Rp																
<input type="checkbox"/> 15(1/2)	15	15	97±3.0	99±3.0	18	20	1/2	1/2	1/2	30	223	193	49	74	36	71	92	50	AH1-070	50	M6x15
<input type="checkbox"/> 20(3/4)	20	20	117±3.0	116±3.0	18	22	3/4	3/4	3/4	35	229	195	59	74	36	71	92	50	AH1-070	50	M6x15
<input type="checkbox"/> 25(1)	25	25	128±3.0	136±3.0	23	24	1	1	1	44	247	208	67	74	36	71	92	50	AH1-070	50	M6x15
<input type="checkbox"/> 32(1·1/4)	32	32	146±3.0	148±3.0	23	25	1·1/4	1·1/4	1·1/4	54	277	228	81	74	53	54	98	60	AH1-180	55	M6x15
<input type="checkbox"/> 40(1·1/2)	40	40	163±3.0	169±3.0	25	28	1·1/2	1·1/2	1·1/2	65	303	244	98	74	53	54	117	70	AH1-180	70	M8x20

Note) 1. Thread dimension is in accordance with the following standard;
 JIS:JIS B 0203,ANSI:ANSI B1.20.1 and DIN2501 PN10/PN16 (ISO7005 PN10) for DIN
 2. If a fixing insert bolt is used, it should not be screwed in beyond dimension e.

Client name		Date
Thread Standard	<input type="checkbox"/> Rc <input type="checkbox"/> NPT <input type="checkbox"/> Rp	Approved by:
Voltage	<input type="checkbox"/> AC100V <input type="checkbox"/> AC200V	
Oil Free	<input type="checkbox"/> YES	
ESLON Electric Ball Valve		
N-Type (Higher Speed) Thread Type/ 15-40A		
Drawing No.	BVH1540NXE	
SEKISUI SEKISUI CHEMICAL CO.,LTD.		



Actuator Specification	
Type	AD () -300
Rated Torque	30N·m
Speed	3~4sec
Power consumption	AC power supply: 100VA Max. AC power supply: 80VA Max.
Motor	DC Motor
Overload Protection	Thermistor (AD1) 、 Current limiter (AD2)
Manual Operation Mechanism	Manual Clutch Device
Ambient Temperature Range	-20~55℃
Duty Cycle	20% 15min.
Anti Codensation	Space Heater
Enclosure	JIS C0920 IP65
Wiring Conduct	2-G1/2. For φ6~φ12 Cable

No.	Part Name	Q'TY	Material/Type
1	Body	1	
2	Stem	1	
3	Ball Stopper	1	□PVC
4	Ball	1	□PVDF
5	Union Nut	2	
6	Thread Socket	2	
7	Stem O-Ring	2	
8	Ball Stopper O-Ring	1	□EPDM
9	Union O-Ring	2	□FKM
10	Ball Seat O-Ring	2	
11	Ball Seat	2	PTFE
12	Manual Operation Handle	1	ADC-12
13	Electric Conduit Gland	1	PA
14	Yoke	1	ADC-12
15	Connector	1	S45C
16	Cover	1	ADC-12
17	Terminal Stand	1	-
18	Motor	1	-
19	Micro Switch	2	-
20	Actuator Base	1	ADC-12
21	Spacer	1	PVC
22	Upper Mount	1	FRP
23	Lower Mount	1	FRP
24	Fixing Insert Nut	2	C3603

* Stem O-Ring material will be FKM+PTFE in case of Oil Free.

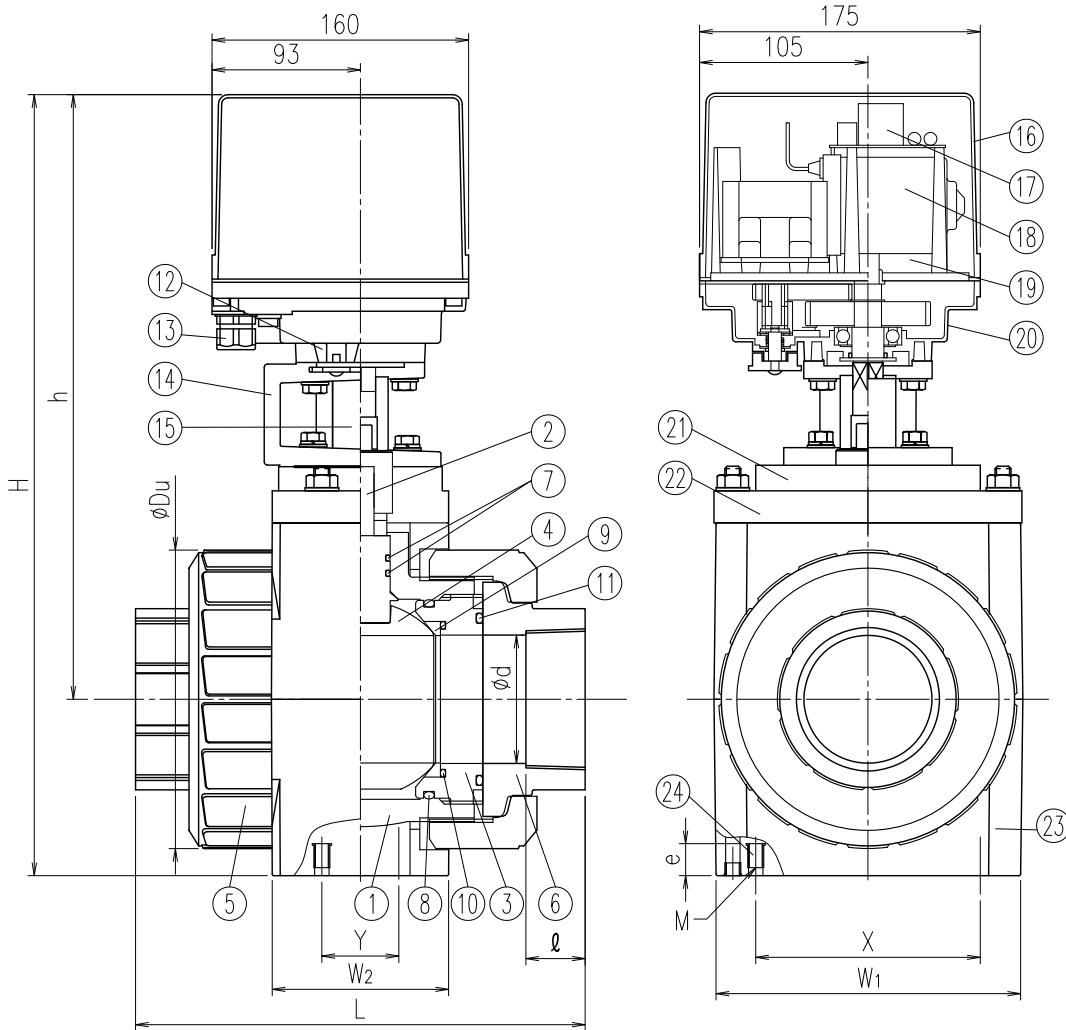
Dimension Table

Unit: mm

Size	A (B)	φd	L		Thread			ℓ	φdo	H	h	φDu	W1	W2	Actuator Type	Fixing Insert Nut	
			PVC	PVDF	JIS (Rc) 、 DIN (Rc)	ANSI (NPT)	DIN (Rp)									X	Mxe
□	50 (2)	50	188±3.0	196±3.0	2	2	2	30	77	405	331	120	135	70	AD () -300	85	M8x20

Note) 1. Thread dimension is in accordance with the following standard;
 JIS:JIS B 0203,ANSI:ANSI B1.20.1 and DIN2501 PN10/PN16 (ISO7005 PN10) for DIN
 2. If a fixing insert bolt is used, it should not be screwed in beyond dimension e.

Client name		Date
Thread Standard	□Rc □NPT □Rp	Approved by:
Actuator Type	□AD1voltage contact (output) □AD2no-voltage contact (output)	
Voltage	□AC100V □AC200V □DC24V (AD2)	
Oil Free	□YES	
ESLON Electric Ball Valve N-Type (Higher Speed) Thread Type/50A		
Drawing No.	BVD50NXE	
SEKISUI SEKISUI CHEMICAL CO.,LTD.		



Actuator Specification		
Type	AD () -300	AD () -700
Rated Torque	30N·m	70N·m
Speed	3~4sec	6~10sec
Power consumption	AC power supply: 100VA Max. AC power supply: 80VA Max.	
Motor	DC Motor	
Overload Protection	Thermistor (AD1) Current limiter (AD2)	
Manual Operation Mechanism	Manual Clutch Device	
Ambient Temperature Range	-20~55°C	
Duty Cycle	20% 15min.	
Anti Codensation	Space Heater	
Enclosure	JIS C0920 IP65	
Wiring Conduct	2-G1/2. For $\phi 6 \sim \phi 12$ Cable	

No.	Part Name	Q'TY	Material/Type
1	Body	1	
2	Stem	1	
3	Ball Stopper	2	<input type="checkbox"/> PVC
4	Ball	1	<input type="checkbox"/> PVDF
5	Union Nut	2	
6	Thread Socket	2	
7	Stem O-Ring	2	
8	Ball Stopper O-Ring	2	<input type="checkbox"/> EPDM
9	Union O-Ring	2	<input type="checkbox"/> FKM
10	Ball Seat O-Ring	2	
11	Ball Seat	2	PTFE
12	Manual Operation Handle	1	ADC-12
13	Electric Conduit Gland	1	PA
14	Yoke	1	ADC-12
15	Connector	1	S45C
16	Cover	1	ADC-12
17	Terminal Stand	1	-
18	Motor	1	-
19	Micro Switch	2	-
20	Actuator Base	1	ADC-12
21	Spacer	1	PVC
22	Upper Mount	1	FRP
23	Lower Mount	1	FRP
24	Fixing Insert Nut	4	C3603

* Stem O-Ring material will be FKM+PTFE in case of Oil Free.

Dimension Table

Unit: mm

Size	A (B)	ϕd	Thread						ℓ	ϕd_o	H	h	ϕd_u	W1	W2	Actuator Type	Fixing Insert Nut		
			JIS (Rc), DIN (Rc)		ANSI (NPT)		DIN (Rp)										X	Y	Mxe
			Rc	L	NPT	L	Rp	L											
<input type="checkbox"/> 65 (2 1/2)	65	2 1/2	227±3.0	2 1/2	212±3.0	2 1/2	212±3.0	32	96	440	351	150	163	90	AH () -300	115	38	M8x10	
<input type="checkbox"/> 80 (3)	80	3	278±3.0	3	261±3.0	3	261±3.0	37	113	487	377	186	198	110	AH () -700	140	48	M8x10	
<input type="checkbox"/> 100 (4)	100	4	330±3.0	4	315±3.0	4	315±3.0	45	144	552	412	228	240	110	AH () -700	180	59	M8x10	

Note) 1. Thread dimension is in accordance with the following standard; JIS: JIS B 0203, ANSI: ANSI B1.20.1 and DIN 2501 PN10/PN16 (ISO 7005 PN10) for DIN
2. If a fixing insert bolt is used, it should not be screwed in beyond dimension e.

Client name		Date
Thread Standard	<input type="checkbox"/> Rc <input type="checkbox"/> NPT <input type="checkbox"/> Rp	Approved by:
Actuator Type	<input type="checkbox"/> AD1 voltage contact (output) <input type="checkbox"/> AD2 no-voltage contact (output)	
Voltage	<input type="checkbox"/> AC100V <input type="checkbox"/> AC200V <input type="checkbox"/> DC24V (AD2)	
Oil Free	<input type="checkbox"/> YES	
ESLON Electric Ball Valve		
N-Type (Higher Speed) Thread Type/65-100A		
Drawing No.	BVD651HNXE	
SEKISUI SEKISUI CHEMICAL CO., LTD.		