

No.	Part Name	Q'TY	Material/Type	No.	Part Name	Q'TY	Material/Type
18	Spring Washer	2	SUS304	1	Body	1	PVC
19	Washer	2	SUS304	2	Stem	1	
20	Yoke	1	FRP	3	Ball holder	1	
21	Upper Mount	1	FRP	4	Ball	1	
22	Lower Mount	1	FRP	5	Union nut	2	
23	Insert Nut	2	C3601	6	Set Ring	2	
* Stem O-Ring material will be FKM+PTFE in case of Oil Free.				7	Flange	2	
8	Stem O-ring (*)	15-20A	1	□EPDM □FKM	25-50A	2	
9	Ball holder O-ring		1				
10	Union O-ring		2				
11	Ball seat O-ring		2				
12	Ball Seat		2	PTFE			
13	Electric Actuator		1	-			
14	Yoke		1	SUS304			
15	Joint		1	SUS303			
16	Stud Bolt		2	SUS304			
17	Nut		2	SUS304			

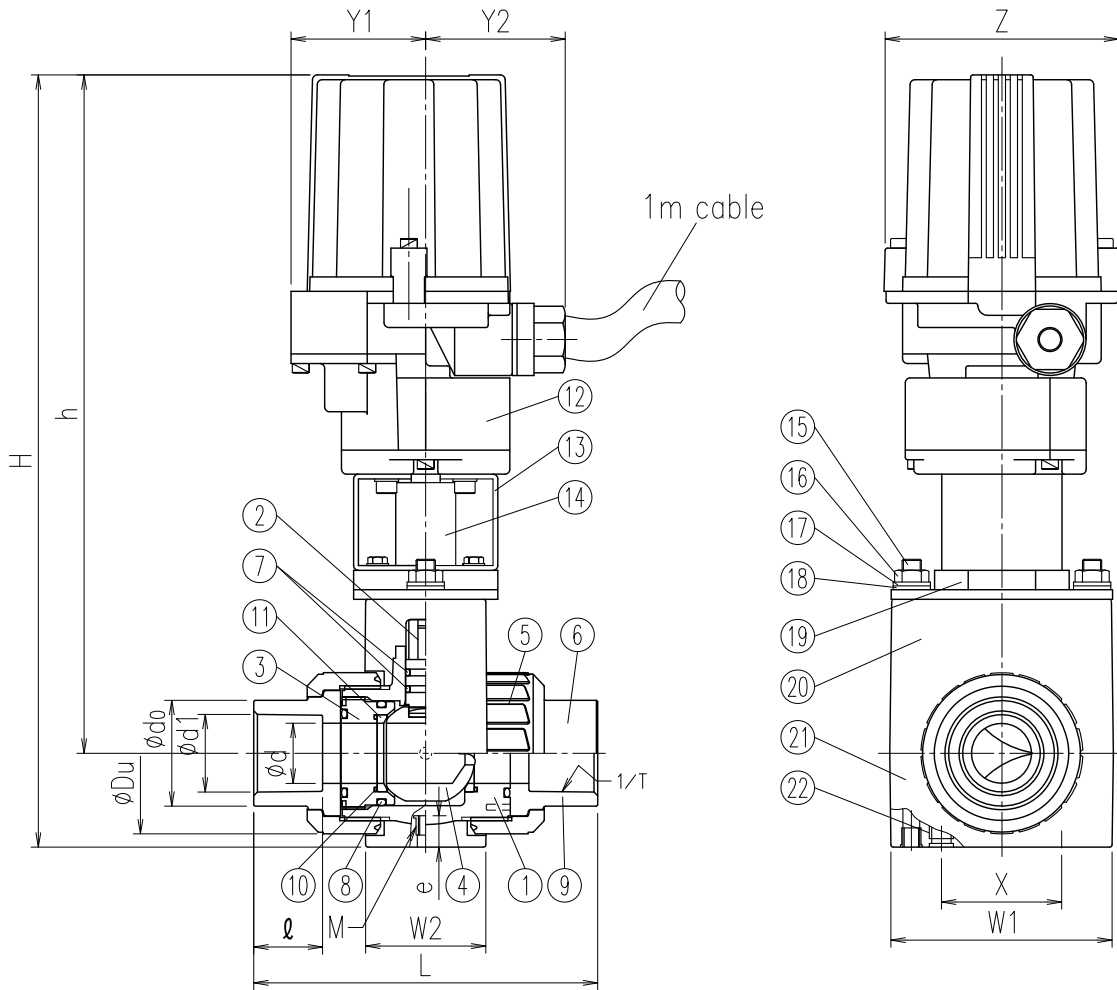
Type	MRP5	MRP6
Open-Close time	10sec	13sec
Operating Voltage	DC24V	
Motor Type	Stepper Motor	
Input Signal	DC4-20mA (Input Resistance 250Ω)	
Output Signal	DC1-5V (Allowable Load Resistance 5KΩ or more)	
Resolution	MAX1/1000	
Insulation resistance	100MΩ or more/DC500V	
Power consumption	approx. 14.4W	
Protection Class	IP66	

Dimension Table

Size	A(B)	ød	L	FLANGE												H	h	øDu	Y1	Y2	Z	W1	W2	Actuator Type	Fixing Insert Nut	
				JIS10K				ANSI				DIN													X	Mxe
				øD	øC	n-øh	t	øD	øC	n-øh	t	øD	øC	n-øh	t											
□ 15(1/2)	15	143±1.5	95	70	4-15	14	89.0	60.5	4-16	11.5	95	65	4-14	11	316	267	49	63	58	98	92	50	MRP5	50	M6x15	
□ 20(3/4)	20	172±1.5	100	75	4-15	14	98.0	70.0	4-16	13.0	105	75	4-14	12	321	270	59	63	58	98	92	50	MRP5	50	M6x15	
□ 25(1)	25	187±1.5	125	90	4-19	14	108.0	79.5	4-16	14.5	115	85	4-14	14	346	282	67	63	58	98	92	50	MRP5	50	M6x15	
□ 32(1.1/4)	32	190±1.5	135	100	4-19	16	117.5	89.0	4-16	16.0	140	100	4-18	15	355	286	81	63	58	98	98	60	MRP5	55	M6x15	
□ 40(1.1/2)	40	212±1.5	140	105	4-19	16	127.0	98.5	4-16	17.5	150	110	4-18	16	407	336	98	56	118	110	117	70	MRP6	70	M8x20	
□ 50(2)	50	234±1.5	155	120	4-19	20	152.0	120.5	4-19	19.5	165	125	4-18	18	422	343	120	56	118	110	135	70	MRP6	85	M8x20	

Note) 1. Flange dimension is in accordance with the following standard;  
 JIS B 2220 for JIS10K, ANSI B16.5 for ANSI and DIN2501 PN10/PN16 (ISO7005 PN10) for DIN  
 2. If a fixing insert bolt is used, it should not be screwed in beyond dimension e.

Client name		Date
Voltage	<input type="checkbox"/> DC24V (Standard) <input type="checkbox"/> AC100V (Special order)	Approved by:
Flange Standard	<input type="checkbox"/> JIS10K <input type="checkbox"/> ANSI <input type="checkbox"/> DIN	
Oil Free	<input type="checkbox"/> YES	
ESLON Electric YP Ball Valve		
Flange / 15(1/2") -50(2")		
Drawing No.	YVM1550FXE	
<b>SEKISUI SEKISUI CHEMICAL CO.,LTD.</b>		



No.	Part Name	Q'TY	Material/Type	No.	Part Name	Q'TY	Material/Type
19	Yoke	1	FRP	1	Body	1	PVC
20	Upper Mount	1	FRP	2	Stem	1	
21	Lower Mount	1	FRP	3	Ball holder	1	
22	Insert Nut	2	C3601	4	Ball	1	
* Stem O-Ring material will be FKM+PTFE in case of Oil Free.				5	Union nut	2	
				6	Socket	2	
				7	Stem O-ring (*)	15-20A 1 25-50A 2	□EPDM □FKM
				8	Ball holder O-ring	1	
				9	Union O-ring	2	
				10	Ball seat O-ring	2	PTFE
				11	Ball Seat	2	
				12	Electric Actuator	1	-
				13	Yoke	1	SUS304
				14	Joint	1	SUS303
				15	Stud Bolt	2	SUS304
				16	Nut	2	SUS304
				17	Spring Washer	2	SUS304
				18	Washer	2	SUS304

Actuator Specification		
Type	MRP5	MRP6
Open-Close time	10sec	13sec
Operating Voltage	DC24V	
Motor Type	Stepper Motor	
Input Signal	DC4-20mA (Input Resistance 250Ω)	
Output Signal	DC1-5V (Allowable Load Resistance 5KΩ or more)	
Resolution	MAX1/1000	
Insulation resistance	100MΩ or more/DC500V	
Power consumption	approx. 14.4W	
Protection Class	IP66	

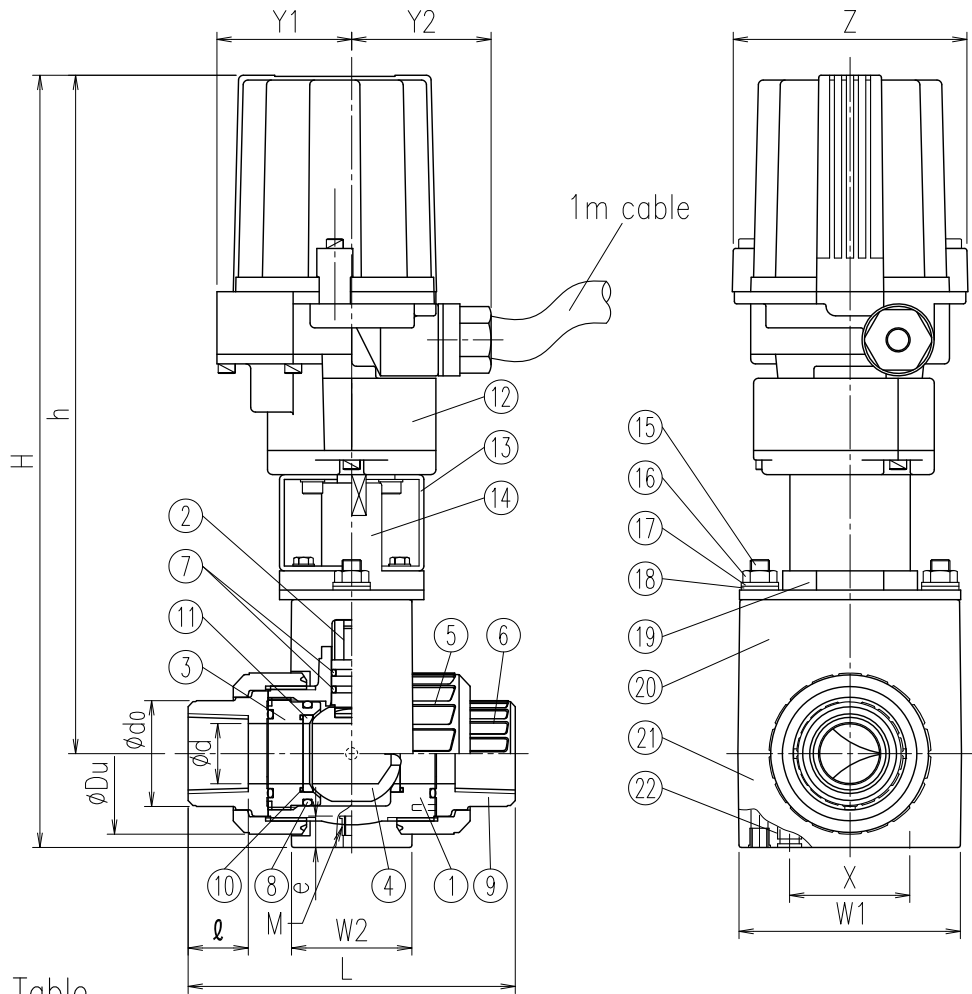
Dimension Table

Unit: mm

Size	A (B)	$\phi d$	L			SOCKET									H	h	$\phi d_u$	Y1	Y2	Z	W1	W2	Actuator Type	Fixing Insert Nut X   Mxe
						JIS			ASTM			DIN												
			JIS	ASTM	DIN	$\phi d_1$	1/T	$\ell$	$\phi d_1$	1/T	$\ell$	$\phi d_1$	1/T	$\ell$										
□ 15 (1/2)	15	109±3.0	103±3.0	92±3.0	22.3	1/37	22	21.54	1/72	22	20.3	1/65	16	296	267	49	63	58	98	53	93	MRP5	50 M6x15	
□ 20 (3/4)	20	132±3.0	119±3.0	107±3.0	26.3	1/42	25	26.87	1/85	25	25.3	1/80	19	304	270	59	63	58	98	53	93	MRP5	50 M6x15	
□ 25 (1)	25	143±3.0	133±3.0	121±3.0	32.3	1/43	29	33.65	1/75	29	32.3	1/95	22	321	282	67	63	58	98	53	93	MRP5	50 M6x15	
□ 32 (1-1/4)	32	166±3.0	147±3.0	137±3.0	38.4	1/37	32	42.42	1/84	32	40.3	1/115	26	335	286	81	63	58	98	61	98	MRP5	55 M6x15	
□ 40 (1-1/2)	40	175±3.0	171±3.0	161±3.0	48.5	1/38	35	48.56	1/78	35	50.3	1/140	31	395	336	98	56	118	110	70	117	MRP5	70 M8x20	
□ 50 (2)	50	203±3.0	188±3.0	189±3.0	60.7	1/34	38	60.63	1/83	38	63.3	1/175	38	417	343	120	56	118	110	70	135	MRP6	85 M8x20	

Note) 1. Socket dimension is in accordance with the following standard;ASTM:ASTM D2467 and DIN2501 PN10/PN16 (ISO7005 PN10) for DIN  
 2. If a fixing insert bolt is used, it should not be screwed in beyond dimension e.

Client name		Date
Voltage	□DC24V (Standard) □AC100V (Special order)	Approved by:
Socket Standard	□JIS □ASTM □DIN	
Oil Free	□YES	
ESLON Electric YP Ball Valve		
TS Socket / 15 (1/2") - 50 (2")		
Drawing No.	YVM1550SXE	
<b>SEKISUI SEKISUI CHEMICAL CO.,LTD.</b>		



No.	Part Name	Q'TY	Material/Type	No.	Part Name	Q'TY	Material/Type
19	Yoke	1	FRP	1	Body	1	PVC
20	Upper Mount	1	FRP	2	Stem	1	
21	Lower Mount	1	FRP	3	Ball holder	1	
22	Insert Nut	2	C3601	4	Ball	1	
* Stem O-Ring material will be FKM+PTFE in case of Oil Free.				5	Union nut	2	
				6	Thread Socket	2	
				7	Stem O-ring (*)	15-20A 1 25-50A 2	□EPDM □FKM
				8	Ball holder O-ring	1	
				9	Union O-ring	2	
				10	Ball seat O-ring	2	
				11	Ball Seat	2	PTFE
				12	Electric Actuator	1	-
				13	Yoke	1	SUS304
				14	Joint	1	SUS303
				15	Stud Bolt	2	SUS304
				16	Nut	2	SUS304
				17	Spring Washer	2	SUS304
				18	Washer	2	SUS304

Actuator Specification		
Type	MRP5	MRP6
Open-Close time	10sec	13sec
Operating Voltage	DC24V	
Motor Type	Stepper Motor	
Input Signal	DC4-20mA (Input Resistance 250Ω)	
Output Signal	DC1-5V (Allowable Load Resistance 5KΩ or more)	
Resolution	MAX1/1000	
Insulation resistance	100MΩ or more/DC500V	
Power consumption	approx. 14.4W	
Protection Class	IP66	

Dimension Table

Unit: mm

Size	A (B)	φd	L	Thread				l	φdo	H	h	φDu	Y1	Y2	Z	W1	W2	Actuator Type	Fixing Insert Nut	
				JIS (Rc)	DIN (Rc)	ANSI (NPT)	DIN (Rp)												X	Mxe
□ 15 (1/2)	15	15	97±3.0	1/2	1/2	1/2	18	30	296	267	49	63	58	98	92	50	MRP5	50	M6x15	
□ 20 (3/4)	20	20	117±3.0	3/4	3/4	3/4	18	35	304	270	59	63	58	98	92	50	MRP5	50	M6x15	
□ 25 (1)	25	25	128±3.0	1	1	1	23	44	321	282	67	63	58	98	92	50	MRP5	50	M6x15	
□ 32 (1·1/4)	32	32	146±3.0	1·1/4	1·1/4	1·1/4	23	54	335	286	81	63	58	98	98	60	MRP5	55	M6x15	
□ 40 (1·1/2)	40	40	163±3.0	1·1/2	1·1/2	1·1/2	25	65	395	336	98	56	118	110	117	70	MRP6	70	M8x20	
□ 50 (2)	50	50	188±3.0	2	2	2	30	77	417	343	120	56	118	110	135	70	MRP6	85	M8x20	

Note) 1. Thread dimension is in accordance with the following standard;  
 JIS:JIS B 0203,ANSI:ANSI B1.20.1 and DIN2501 PN10/PN16 (ISO7005 PN10) for DIN  
 2. If a fixing insert bolt is used, it should not be screwed in beyond dimension e.

Client name		Date
Voltage	<input type="checkbox"/> DC24V (Standard)	Approved by:
	<input type="checkbox"/> AC100V (Special order)	
Thread Standard	<input type="checkbox"/> Rc <input type="checkbox"/> NPT <input type="checkbox"/> Rp	
Oil Free	<input type="checkbox"/> YES	
ESLON Electric YP Ball Valve		
Thread / 15 (1/2") - 50 (2")		
Drawing No.	YVM1550NXE	
<b>SEKISUI SEKISUI CHEMICAL CO.,LTD.</b>		