

No.	Part name	Q'ty	Material/Type
1	Body	1	PVC
2	Union Nut	2	
3	Flange	2	
4	Valve Seat	2	
5	O-Ring	1	EPDM
6	Disc	1	
7	O-Ring	2	FKM
8	O-Ring	2	FKM
9	Packing	1	
10	O-Ring	1	NBR
11	DIN Plug	1	PA
12	Terminal	-	-
13	Actuator	1	Epoxy
14	Spring	1	SUS304CSP
15	Slotted Head Screw	4	SUS316
16	Spule	1	-
17	Flapper	1	SS400+Ni coated
18	Seal Plate	1	SUS316
19	Diaphragm	1	PTFE
20	Manual Button	1	PA
21	Slotted Head Screw	2	SUS316
22	Insert Nut	2	SUS316
23	Set Ring	2	PVDF

\* A cable should surely use ø4.5-10.

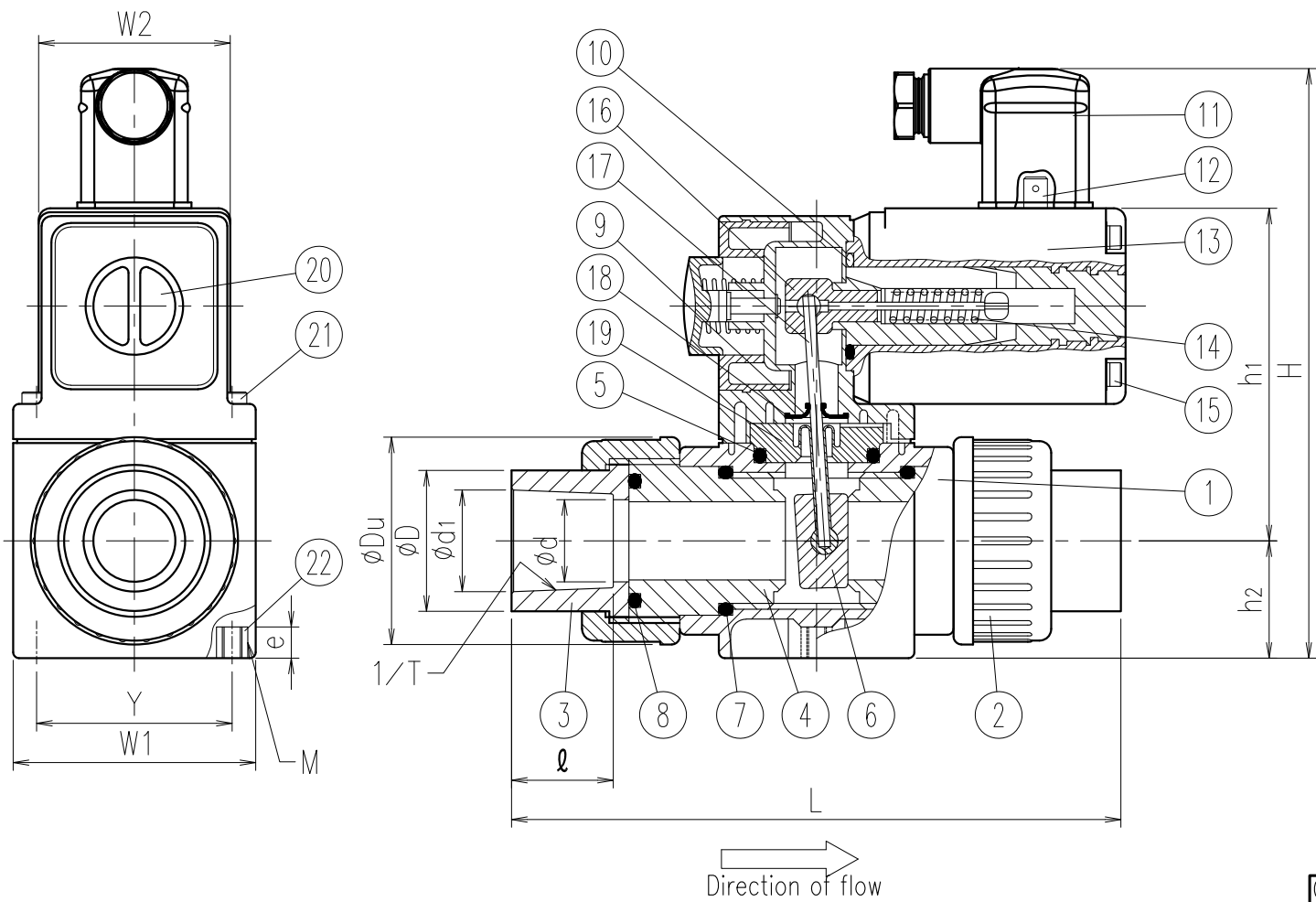
Dimension Table

Unit: mm

Size	A(B)	ød	L	Flange				H	h1	h2	øDu	W1	W2	The screw for fixation		Weight kg/unit	Cv Value	Pressure to be used MPa (at20°C)	
				øD	øC	n-øh	t							Y	Mxe			AC/50Hz,DC	AC/60Hz
□	15(1/2)	16	202±3.0	95	70	4-15	14	172	85.5	30	42	62	49	50	M5x8	1.2	5.3	0~0.1	0~0.07
□	20(3/4)	20	204±3.0	100	75	4-15	14	174	85.5	30	52	62	49	50	M5x8	1.2	7.0	0~0.05	0~0.03

Note) 1. Flange dimension is in accordance with the following standard;JIS B2220: 2004  
 2. If a fixing insert bolt is used, it should not be screwed in beyond dimension e.

Client name		Date
Voltage	<input type="checkbox"/> DC24V	Approved by:
	<input type="checkbox"/> AC100V <input type="checkbox"/> AC200V	
ESLON		
Solenoid Valve Type131 Flange Type 15-20A		
Drawing No.	S31520FE	
<b>SEKISUI SEKISUI CHEMICAL CO.,LTD.</b>		



No.	Part name	Q'ty	Material/Type
1	Body	1	PVC
2	Union Nut	2	
3	TS Socket	2	
4	Valve Seat	2	
5	O-Ring	1	□EPDM □FKM
6	Disc	1	
7	O-Ring	2	
8	O-Ring	2	FKM
9	Packing	1	
10	O-Ring	1	NBR
11	DIN Plug	1	PA
12	Terminal	-	-
13	Actuator	1	Epoxy
14	Spring	1	SUS304CSP
15	Slotted Head Screw	4	SUS316
16	Spule	1	-
17	Flapper	1	SS400+Ni coated
18	Seal Plate	1	SUS316
19	Diaphragm	1	PTFE
20	Manual Button	1	PA
21	Slotted Head Screw	2	SUS316
22	Insert Nut	2	SUS316

\* A cable should surely use ø4.5-10.

Dimension Table

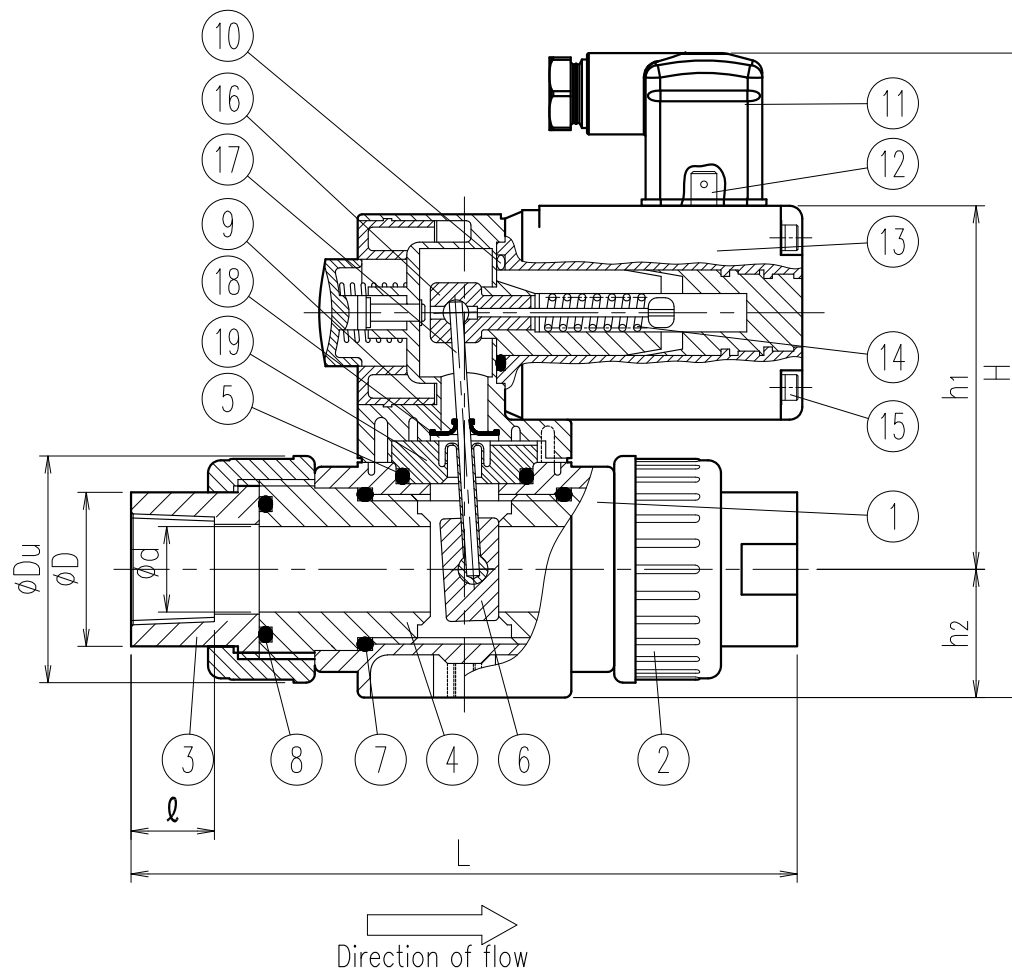
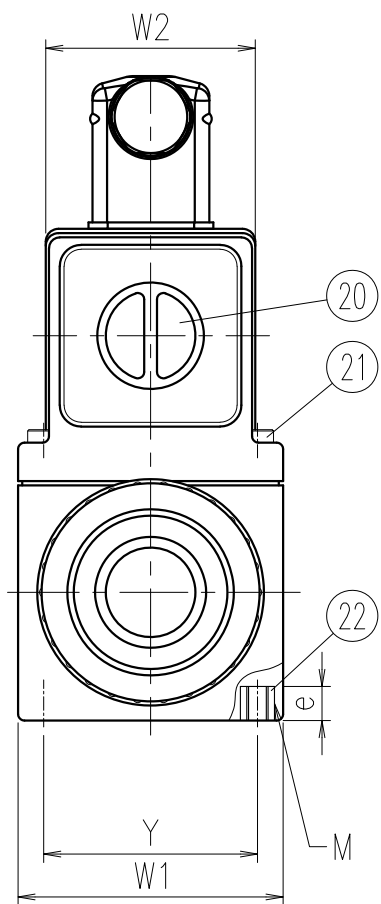
Unit: mm

Size	A(B)	ød	L	TS Socket				H	h1	h2	øDu	W1	W2	The screw for fixation		Weight kg/unit	Cv Value	Pressure to be used MPa (at20°C)	
				ød1	1/T	l	øD							Y	Mxe			AC/50Hz,DC	AC/60Hz
□ 13(3/8)	13	146±3.0	18.3	1/33	16.5	22	154	85.5	30	34	62	49	50	M5x8	1.2	2.3	0~0.3	0~0.2	
□ 15(1/2)	16	150±3.0	22.3	1/37	22	27	154	85.5	30	42	62	49	50	M5x8	1.2	5.3	0~0.1	0~0.07	
□ 20(3/4)	20	162±3.0	26.3	1/42	25	36	154	85.5	30	52	62	49	50	M5x8	1.2	7.0	0~0.05	0~0.03	

Note) 1. If a fixing insert bolt is used, it should not be screwed in beyond dimension e.

Client name		Date
Voltage	<input type="checkbox"/> DC24V	Approved by:
	<input type="checkbox"/> AC100V <input type="checkbox"/> AC200V	

ESLON  
Solenoid Valve Type131 TS-Socket Type 13-20A  
Drawing No. S31320SE  
**SEKISUI SEKISUI CHEMICAL CO.,LTD.**



No.	Part name	Q'ty	Material/Type
1	Body	1	PVC
2	Union Nut	2	
3	Thread Sockt	2	
4	Valve Seat	2	
5	O-Ring	1	EPDM
6	Disc	1	
7	O-Ring	2	FKM
8	O-Ring	2	
9	Packing	1	FKM
10	O-Ring	1	NBR
11	DIN Plug	1	PA
12	Terminal	-	-
13	Actuator	1	Epoxy
14	Spring	1	SUS304CSP
15	Slotted Head Screw	4	SUS316
16	Spule	1	-
17	Flapper	1	SS400+Ni coated
18	Seal Plate	1	SUS316
19	Diaphragm	1	PTFE
20	Manual Button	1	PA
21	Slotted Head Screw	2	SUS316
22	Insert Nut	2	SUS316

\* A cable should surely use  $\phi 4.5-10$ .

Dimension Table

Unit: mm

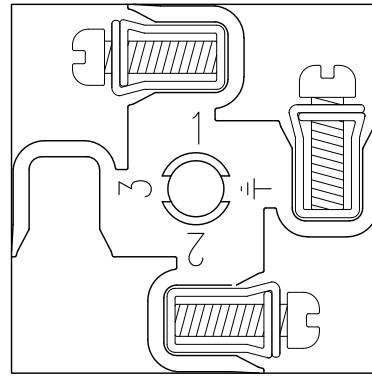
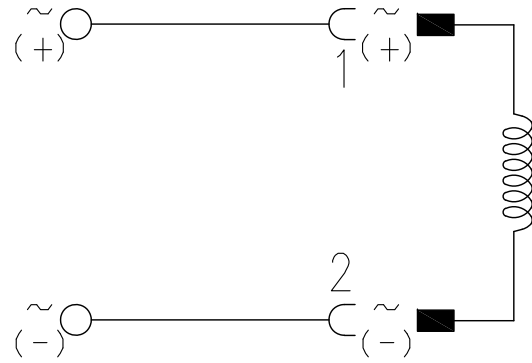
Size	A(B)	$\phi d$	L	Thread			H	h1	h2	$\phi Du$	W1	W2	The screw for fixation		Weight kg/unit	Cv Value	Pressure to be used MPa (at20°C)	
				Rc	l	$\phi D$							Y	Mxe			AC/50Hz,DC	AC/60Hz
				<input type="checkbox"/>	13(3/8)	13							132±3.0	Rp3/8			15	22
<input type="checkbox"/>	15(1/2)	16	137±3.0	Rp1/2	17	27	154	85.5	30	42	62	49	50	M5x8	1.2	5.3	0~0.1	0~0.07
<input type="checkbox"/>	20(3/4)	20	144±3.0	Rp3/4	18	36	154	85.5	30	52	62	49	50	M5x8	1.2	7.0	0~0.05	0~0.03

Note) 1. Thread dimension is in accordance with the following standard; JIS B 0203  
 2. If a fixing insert bolt is used, it should not be screwed in beyond dimension e.

Client name		Date
Voltage	<input type="checkbox"/> DC24V	Approved by:
	<input type="checkbox"/> AC100V <input type="checkbox"/> AC200V	

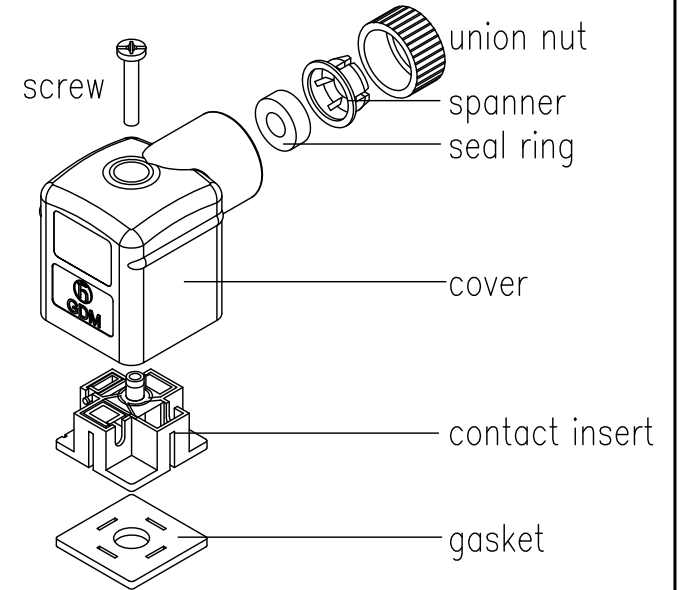
ESLON	
Solenoid Valve Type131 Thread Type 13-20A	
Drawing No.	S31320NE
<b>SEKISUI SEKISUI CHEMICAL CO.,LTD.</b>	

# connection



electric wire (sectional area)  
max. 0.75mm<sup>2</sup>

Cable outside diameter  
4.5~10mm



- Notis) 1. Electrical connection uses wiring terminals 1,2 and ground.  
 2. Wiring way is the same as all types of source AC100V,AC200V and DC24V.  
 3. In case of alternating current (AC) supply,grounding earth must be connected.  
 4. In case of direct current (DC) supply,accept both connecting direction of the poles (+/-) .

Client name	Date
	Approved by:
Eslon Solenoid Valve Cable Plug Type2518 (Type131、Type142)	
Drawing No.	S2518000V (E)
<b>SEKISUI SEKISUI CHEMICAL CO.,LTD.</b>	