

Dimension Table

Unit: mm

Size	A(B)	TS Socket				L	Z	Flange					Bolt		Item No.		
		d1	l	1/T	D1			C	D2	d2	t	n-oh	M	Length	PVC	HI-PVC	C-PVC (HT)
□ 13(3/8)	18.4	26	1/30	26	31	5	65	90	14	14	4-15	M12	50	TSF13V	TSFHI13	TSFHT13	
□ 15(1/2)	22.4	30	1/34	31	35	5	70	95	17	14	4-15	M12	50	TSF15V	TSFHI15	TSFHT15	
□ 20(3/4)	26.5	35	1/34	35	40	5	75	100	21	14	4-15	M12	50	TSF20V	TSFHI20	TSFHT20	
□ 25(1)	32.6	40	1/34	42	45	5	90	125	25	14	4-19	M16	55	TSF25V	TSFHI25	TSFHT25	
□ 32(1 1/4)	38.6	44	1/34	48	50	6	100	135	31	16	4-19	M16	60	TSF30V	TSFHI30	TSFHT30	
□ 40(1 1/2)	48.7	55	1/37	61	61	6	105	140	41	16	4-19	M16	60	TSF40V	TSFHI40	TSFHT40	
□ 50(2)	60.8	63	1/37	73	70	7	120	155	52	20	4-19	M16	70	TSF50V	TSFHI50	TSFHT50	
□ 65(2 1/2)	76.6	61	1/48	88	70	9	140	175	67	22	4-19	M16	75	TSF65V	TSFHI65	TSFHT65	
□ 80(3)	89.6	64	1/49	102	72	8	150	185	78	22	8-19	M16	75	TSF80V	TSFHI80	TSFHT80	
□ 100(4)	114.7	84	1/56	132	90	6	175	210	100	22	8-19	M16	75	TSF1HV	TSFHI1H	TSFHT1H	
□ 125(5)	140.9	104	1/58	158	114	10	210	250	125	24	8-23	M20	80	TSF1QV	TSFHI1Q	TSFHT1Q	
□ 150(6)	166.0	132	1/63	186	142	10	240	280	146	26	8-23	M20	85	TSF1FV	TSFHI1F	TSFHT1F	
□ 200(8)	217.5	155	1/50	238	166	11	290	330	196	28	12-23	M20	90	TSF2HV	TSFHI2H	TSFHT2H	
□ 250(10)	268.8	185	1/50	289	198	13	355	400	247	30	12-25	M22	95	TSF2FV	TSFHI2F	TSFHT2F	
□ 300(12)	319.0	185	1/57	344	203	18	400	445	298	32	16-25	M22	100	TSF3HV	TSFHI3H	TSFHT3H	

Remarks) 1. The dimensions of TS Ends are in conformity with JIS K6743
2. Flange dimensions are according to JIS B 2220:2004.

A(B)	形状		
	PVC	HI-PVC	C-PVC (HT)
13-20A			
25-30A			
40A			
50-65A			
80-100A	 ※TSfoov		
125-150A			
200-250A			
300A			

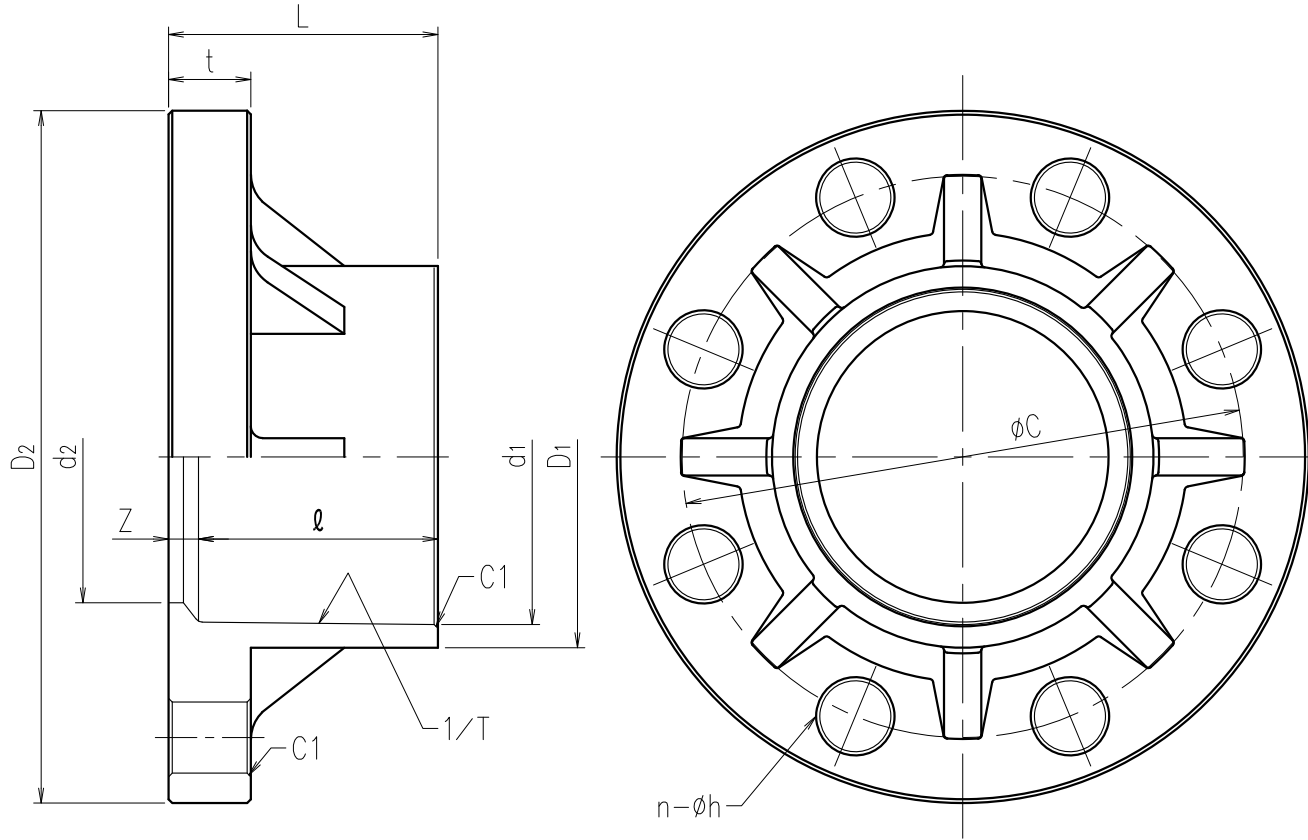
Client name _____ Date _____

Body Material PVC HI-PVC C-PVC (HT) Approved by: _____

ESLON
TS Flange JIS10K 13~300A

Drawing No. TF133HFJ

SEKISUI SEKISUI CHEMICAL CO.,LTD.



A(B)	形状
13-20A	
25-80A	
100A	
125-200A	
250-300A	

Dimension Table

Unit: mm

SIZE	A(B)	TS SOCKET				L	Z	FLANGE					Weight (Ref.) kg/unit	Item No.		
		d1	l	1/T	D1			C	D2	d2	t	n-øh		PVC	HI-PVC	C-PVC (HT)
□ 15(1/2)	22.4	30	1/34	31	35	5	60.5	89.0	17	14	4-16	0.13	TSF15U	TSF115U	TSFT15U	
□ 20(3/4)	26.5	35	1/34	35	40	5	70.0	98.6	21	14	4-16	0.15	TSF20U	TSF120U	TSFT20U	
□ 25(1)	32.6	40	1/34	42	45	5	79.5	108.0	25	14	4-16	0.24	TSF25U	TSF125U	TSFT25U	
□ 32(1 1/4)	38.6	44	1/34	48	50	6	89.0	117.5	31	16	4-16	0.31	TSF30U	TSF130U	TSFT30U	
□ 40(1 1/2)	48.7	55	1/37	61	61	6	98.5	127.0	41	16	4-16	0.36	TSF40U	TSF140U	TSFT40U	
□ 50(2)	60.8	63	1/37	73	70	7	120.5	155.0	52	20	4-20	0.52	TSF50U	TSF150U	TSFT50U	
□ 65(2 1/2)	76.6	61	1/48	88	70	9	139.5	175.0	67	22	4-20	0.71	TSF65U	TSF165U	TSFT65U	
□ 80(3)	89.6	64	1/49	102	72	8	152.5	190.5	78	22	4-20	0.89	TSF80U	TSF180U	TSFT80U	
□ 100(4)	114.7	84	1/56	132	90	6	190.5	229.0	100	22	8-20	1.65	TSF1HU	TSF11HU	TSFT1HU	
□ 125(5)	140.9	104	1/58	158	114	10	216.0	250.0	125	24	8-22	1.67	TSF1QU	TSF11QU	TSFT1QU	
□ 150(6)	166.0	132	1/63	186	142	10	241.5	280.0	146	26	8-22	2.53	TSF1FU	TSF11FU	TSFT1FU	
□ 200(8)	217.5	155	1/50	238	166	11	298.5	343.0	196	28	8-22	4.39	TSF2HU	TSF12HU	TSFT2HU	
□ 250(10)	268.8	185	1/50	289	198	13	362.0	406.0	247	30	12-26	5.48	TSF2FU	TSF12FU	TSFT2FU	
□ 300(12)	319.0	185	1/57	344	203	18	432.0	483.0	298	32	12-26	7.80	TSF3HU	TSF13HU	TSFT3HU	

Remarks) 1. The dimensions of TS Ends are in conformity with JIS K6743
 2. Flange dimensions are according to ANSI B 16.5-1981 class 150.

Client name		Date
Body Material	<input type="checkbox"/> PVC	Approved by:
	<input type="checkbox"/> HI-PVC	
	<input type="checkbox"/> C-PVC (HT)	
ESLON		
TS Flange ANSI 15-300A		
Drawing No. TF133HAE		
SEKISUI SEKISUI CHEMICAL CO.,LTD.		