

No.	Part Name	Q'TY	Material/Type
1	Body	1	
2	Stem	1	□PVC
3	Ball Holder	1	□HT (JIS: Brown)
4	Ball	1	□CPVC (ANSI·DIN: Gray)
5	Union Nut	2	□PP
6	Set Ring	2	□PVDF
7	Flange	2	
8	Stem O-Ring	2	
9	Ball holder O-Ring	1	□EPDM
10	Union O-Ring	2	□FKM
11	Ball Seat O-Ring	2	
12	Ball Seat	2	PTFE
13	Screw	4	SUS304
14	Cylinder	1	AL6063
15	Connector	1	AL6061
16	Hexagon Nut	2	SUS304
17	Washer	4	SUS304
18	Hexagon Bolt	2	SUS304
19	Upper Yoke	1	GF-PP
20	Lower Yoke	1	GF-PP
21	Insert Nut	2	C3601
22	Shaft	15-25A 1 32-50A 1	S10C SCM435
23	Cover	2	AL12
24	Adjust Bolt	2	SUS304
25	Cover Bolt	8	SUS304
26	Shaft Cover	1	PA+PE

※ Stem O-Ring material will be FKM+PTFE in case of Oil Free.

Dimension Table

Unit: mm

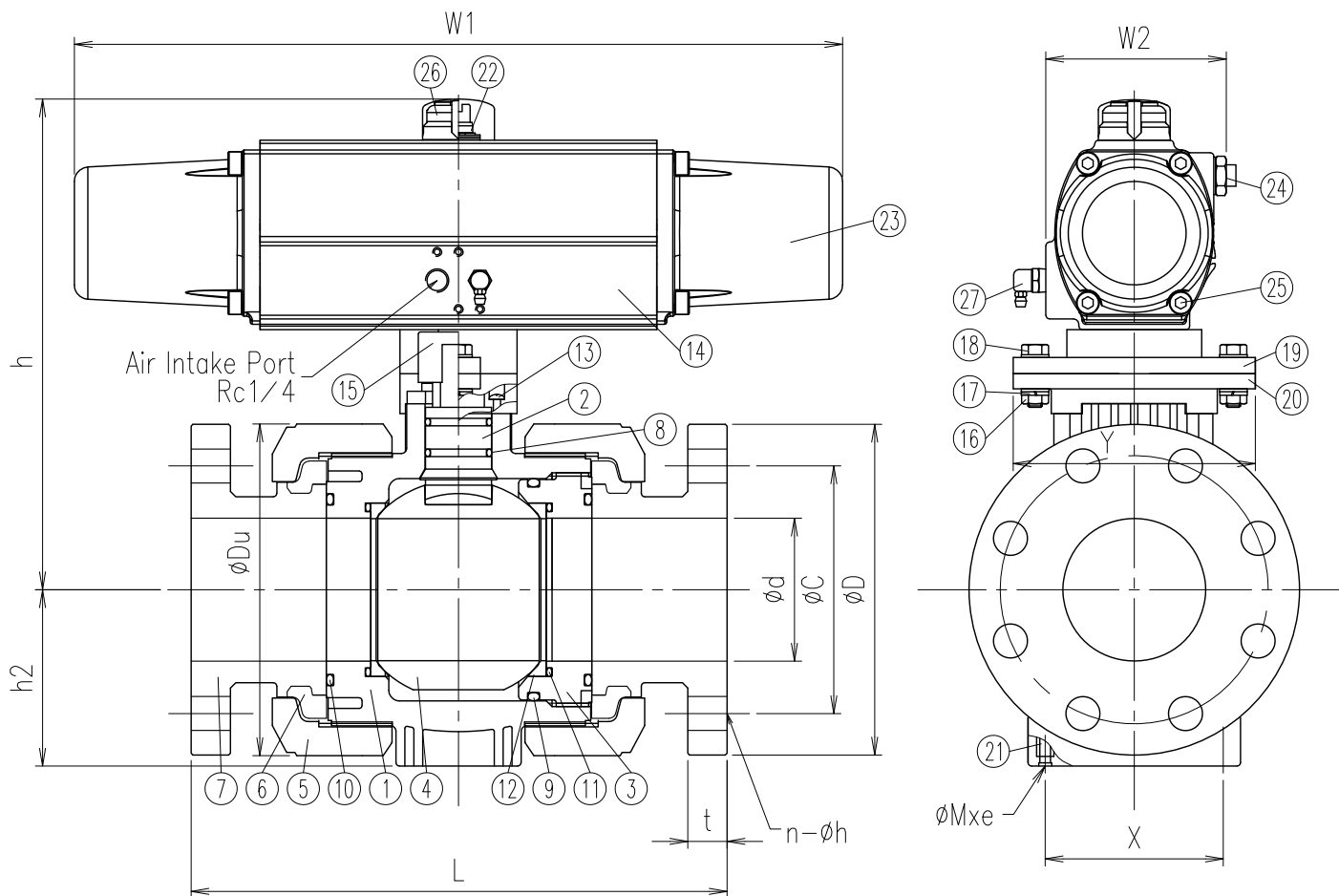
Size	A (B)	ød	L	FLANGE												h	h2	øDu	W1	W2	Y	Actuator Type	Air supply	Fixing Insert Nut	
				JIS10K				ANSI				DIN												X	Mxe
				øD	øC	n-øh	t	øD	øC	n-øh	t	øD	øC	n-øh	t										
□ 15 (1/2)	15	143±1.5	95	70	4-15	14	89.0	60.5	4-16	11.5	95	65	4-14	11	132	28	49	97	60	68	RD40	Rc1/8	27	M5x8	
□ 20 (3/4)	20	172±1.5	100	75	4-15	14	98.0	70.0	4-16	13.0	105	75	4-14	12	137	32	59	97	60	68	RD40	Rc1/8	32	M5x8	
□ 25 (1)	25	187±1.5	125	90	4-19	14	108.0	79.5	4-16	14.5	115	85	4-14	14	146	37	67	97	60	86	RD40	Rc1/8	37	M5x8	
□ 32 (1·1/4)	32	190±1.5	135	100	4-19	16	117.5	89.0	4-16	16.0	140	100	4-18	15	170	43	81	162	75	86	AD50	Rc1/4	42	M5x8	
□ 40 (1·1/2)	40	212±1.5	140	105	4-19	16	127.0	98.5	4-16	17.5	150	110	4-18	16	193	52	98	162	75	117	AD50	Rc1/4	57	M6x11	
□ 50 (2)	50	234±1.5	155	120	4-19	20	152.0	120.5	4-19	19.5	165	125	4-18	18	199	63	120	162	75	117	AD50	Rc1/4	67	M6x11	

Note) 1. Flange dimension is in accordance with the following standard;

JIS B 2220 for JIS10K, ANSI B16.5 for ANSI and DIN EN 1092-1 PN10 for DIN

2. If a fixing insert bolt is used, it should not be screwed in beyond dimension e.

Client name		Date
Flange Standard	□JIS10K □ANSI □DIN	Approved by:
Oil Free	□YES	
ESLON Pneumatic Ball Valve Type S Double Action/Flange Type 15-50A		
Drawing No.	BVMAD1550FE	
<b>SEKISUI SEKISUI CHEMICAL CO.,LTD.</b>		



No.	Part Name	Q'TY	Material/Type
1	Body	1	
2	Stem	1	□PVC
3	Ball Holder	1	□HT (JIS: Brown)
4	Ball	1	□CPVC (ANSI-DIN: Gray)
5	Union Nut	2	□PP
6	Set Ring	2	□PVDF
7	Flange	2	
8	Stem O-Ring	2	
9	Ball holder O-Ring	1	□EPDM
10	Union O-Ring	2	□FKM
11	Ball Seat O-Ring	2	
12	Ball Seat	2	PTFE
13	Screw	4	SUS304
14	Actuator	1	AL6063
15	Connector	1	AL6061
16	Hexagon Nut	2	SUS304
17	Washer	4	SUS304
18	Hexagon Bolt	2	SUS304
19	Upper Yoke	1	GF-PP
20	Lower Yoke	1	GF-PP
21	Insert Nut	2	C3601
22	Shaft	1	SCM435
23	Cover	2	AL12
24	Adjust Bolt	2	SUS304
25	Cover Bolt	8	SUS304
26	Shaft Cover	1	PA+PE
27	Cylinder Ventilation Plug	1	C3601+Cr Coated

\* Stem O-Ring material will be FKM+PTFE in case of Oil Free.

Dimension Table

Unit: mm

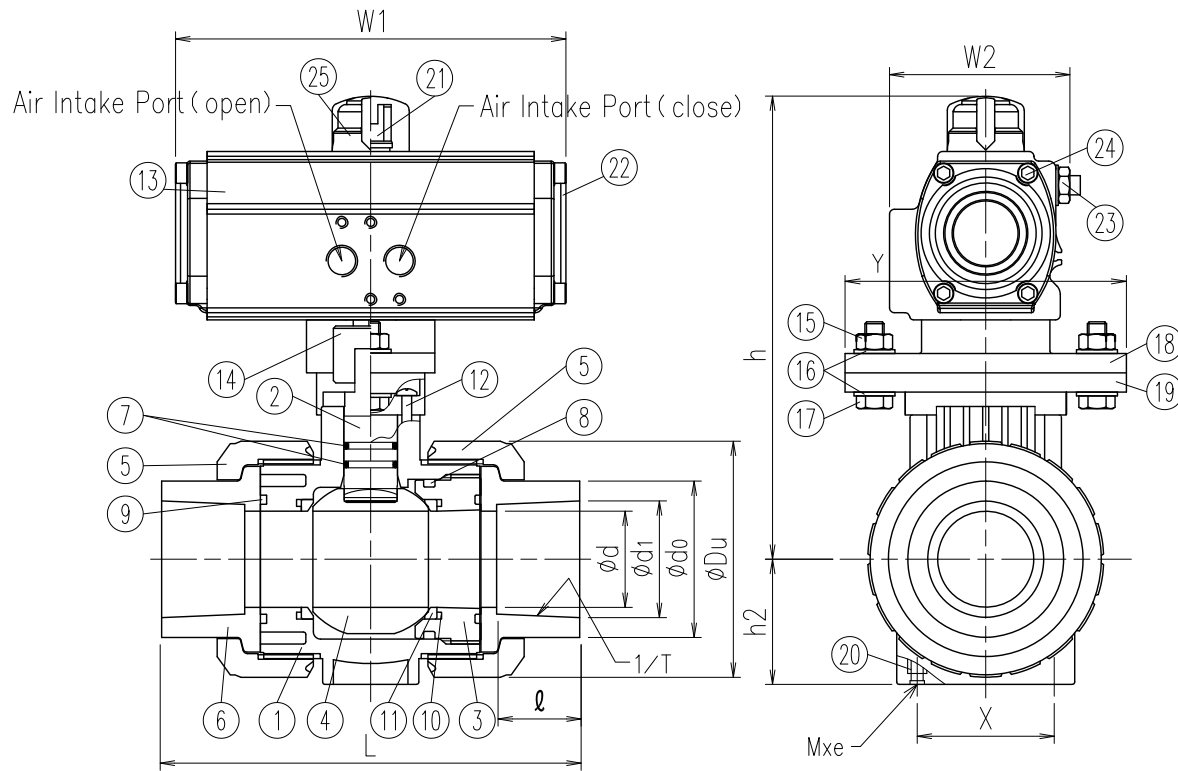
Size	A(B)	ød	L		FLANGE												h	h2	øDu
					JIS10K				ANSI				DIN						
			PVC, HT	PP,PVDF	øD	øC	n-øh	t	øD	øC	n-øh	t	øD	øC	n-øh	t			
□ 65 (2 1/2)	65	65	259±3.0	257±3.0	175	140	4-19	22	178	139.5	4-20	22.5	185	145	4-18	22	264	81	150
□ 80 (3)	80	80	304±3.0	301±3.0	185	150	8-19	22	191	152.5	4-20	24.0	200	160	8-18	23	275	99	186
□ 100 (4)	100	100	372±3.0	367±3.0	210	175	8-19	24	229	190.5	8-20	24.0	220	180	8-18	23	341	121	228

1. Flange dimension is in accordance with the following standard;  
JIS B 2220 for JIS10K, ANSI B16.5 for ANSI and  
DIN2501 PN10/PN16 (ISO7005 PN10) for DIN
2. If a fixing insert bolt is used, it should not be screwed in beyond dimension e.

A(B)	W1	W2	Y	Actuator Type	Fixing Insert Nut	
					X	Mxe
65 (2 1/2)	430	101	135.5	AS80	81	M6x10
80 (3)	430	101	135.5	AS80	99.7	M8x10
100 (4)	500	129	174.5	AS100	119.7	M8x10

Client name		Date
Flange Standard	<input type="checkbox"/> JIS10K <input type="checkbox"/> ANSI <input type="checkbox"/> DIN	Approved by:
Operation Type	<input type="checkbox"/> Air To Open (Fail Close) <input type="checkbox"/> Air To Close (Fail Open)	
Oil Free	<input type="checkbox"/> YES	

ESLON Pneumatic Ball Valve Type S Single Action/Flange Type 65-100A	
Drawing No.	BVMAS651HFE
<b>SEKISUI SEKISUI CHEMICAL CO.,LTD.</b>	



Dimension Table

Unit: mm

Size	A (B)	ød	L			TS Socket						ødo	h	h2	øDu			
			JIS	ASTM	DIN	JIS			ASTM							DIN		
						ød1	1/T	ℓ	ød1	1/T	ℓ					ød1	1/T	ℓ
□ 15 (1/2)	15	15	109±3.0	103±3.0	92±3.0	22	1/37	22	22	1/72	22	20	1/65	16	33	132	28	49
□ 20 (3/4)	20	20	132±3.0	119±3.0	107±3.0	26	1/42	25	27	1/85	25	25	1/80	19	35	137	32	59
□ 25 (1)	25	25	143±3.0	133±3.0	121±3.0	32	1/43	29	34	1/75	29	32	1/95	22	44	146	37	67
□ 32 (1·1/4)	32	32	166±3.0	147±3.0	137±3.0	38	1/37	32	42	1/84	32	40	1/115	26	54	170	43	81
□ 40 (1·1/2)	40	40	175±3.0	171±3.0	161±3.0	49	1/38	35	49	1/78	35	50	1/140	31	66	193	52	98
□ 50 (2)	50	50	203±3.0	188±3.0	189±3.0	61	1/34	38	61	1/83	38	63	1/175	38	77	199	63	120

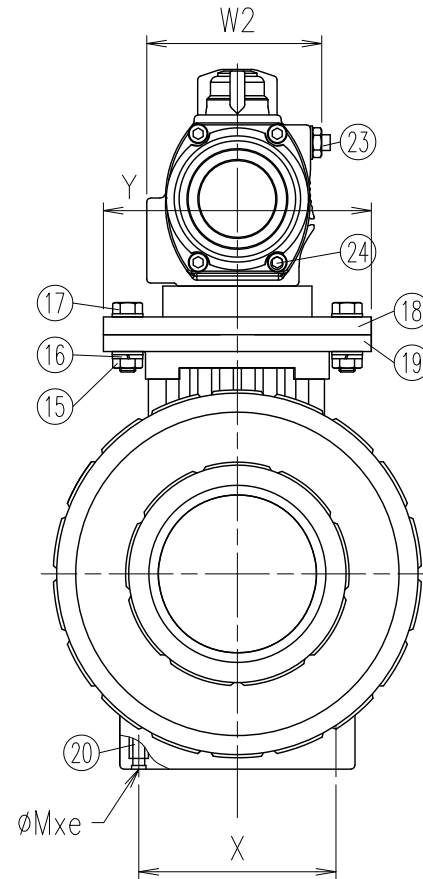
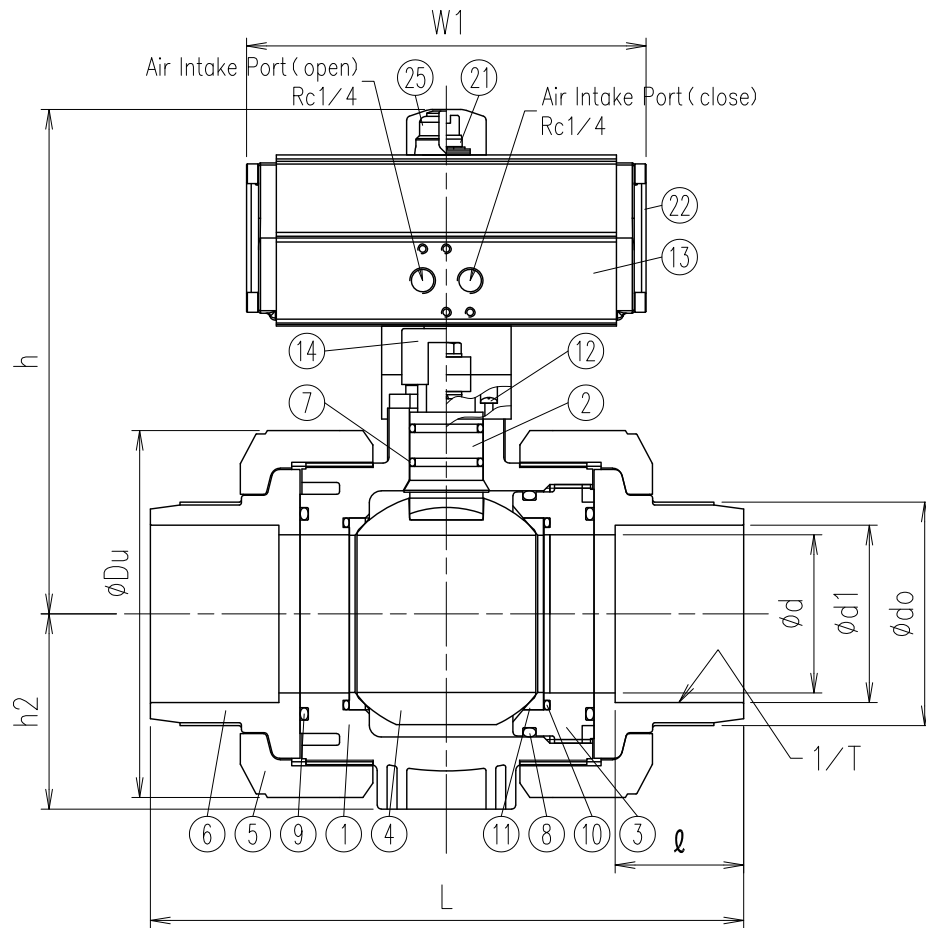
- Socket dimension is in accordance with the following standard;  
ASTM:ASTM D2467,DIN:DIN2501 PN10/PN16 (ISO7005 PN10)
- If a fixing insert bolt is used, it should not be screwed in beyond dimension e.

A (B)	W1	W2	Y	Actuator Type	Air supply	Fixing Insert Nut	
						X	Mxe
15 (1/2)	97	60	68	RD40	Rc1/8	27	M5x8
20 (3/4)	97	60	68	RD40	Rc1/8	32	M5x8
25 (1)	97	60	86	RD40	Rc1/8	37	M5x8
32 (1·1/4)	162	75	86	AD50	Rc1/4	42	M5x8
40 (1·1/2)	162	75	117	AD50	Rc1/4	57	M6x11
50 (2)	162	75	117	AD50	Rc1/4	67	M6x11

No.	Part Name	Q'TY	Material/Type	
1	Body	1		
2	Stem	1	□PVC	
3	Ball Holder	1	□HT (JIS: Brown)	
4	Ball	1	□CPVC	
5	Union Nut	2	(ASTM·DIN: Gray)	
6	TS Socket	2		
7	Stem O-Ring	2		
8	Ball holder O-Ring	1	□EPDM	
9	Union O-Ring	2	□FKM	
10	Ball Seat O-Ring	2		
11	Ball Seat	2	PTFE	
12	Screw	4	SUS304	
13	Actuator	1	AL6063	
14	Connector	1	AL6061	
15	Hexagon Nut	2	SUS304	
16	Washer	4	SUS304	
17	Hexagon Bolt	2	SUS304	
18	Upper Yoke	1	GF-PP	
19	Lower Yoke	1	GF-PP	
20	Insert Nut	2	C3601	
21	Shaft	15-25A	1	S10C
		32-50A	1	SCM435
22	Cover	2	AL12	
23	Adjust Bolt	2	SUS304	
24	Cover Bolt	8	SUS304	
25	Shaft Cover	1	PA+PE	

※ Stem O-Ring material will be FKM+PTFE in case of Oil Free.

Client name		Date
Socket Standard	□JIS □ASTM □DIN	Approved by:
Oil Free	□YES	
ESLON Pneumatic Ball Valve Type S Double Action/TS Socket 15-50A		
Drawing No.	BVMAD1550SE	
<b>SEKISUI SEKISUI CHEMICAL CO.,LTD.</b>		



No.	Part Name	QTY	Material/Type
1	Body	1	
2	Stem	1	□PVC
3	Ball Holder	1	□HT (JIS: Brown)
4	Ball	1	□CPVC
5	Union Nut	2	(ANSI·DIN: Gray)
6	TS Socket	2	
7	Stem O-Ring	2	
8	Ball holder O-Ring	1	□EPDM
9	Union O-Ring	2	□FKM
10	Ball Seat O-Ring	2	
11	Ball Seat	2	PTFE
12	Screw	4	SUS304
13	Actuator	1	AL6063
14	Connector	1	AL6061
15	Hexagon Nut	2	SUS304
16	Washer	4	SUS304
17	Hexagon Bolt	2	SUS304
18	Upper Yoke	1	GF-PP
19	Lower Yoke	1	GF-PP
20	Insert Nut	2	C3601
21	Shaft	1	SCM435
22	Cover	2	AL12
23	Adjust Bolt	2	SUS304
24	Cover Bolt	8	SUS304
25	Shaft Cover	1	PA+PE

※ Stem O-Ring material will be FKM+PTFE in case of Oil Free.

Dimension Table

Unit: mm

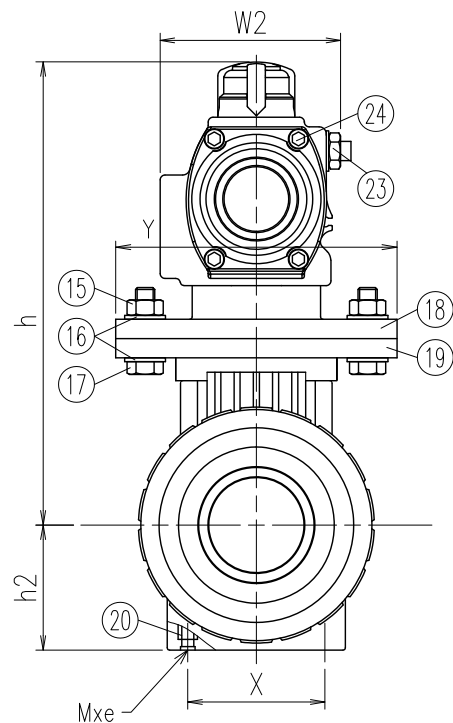
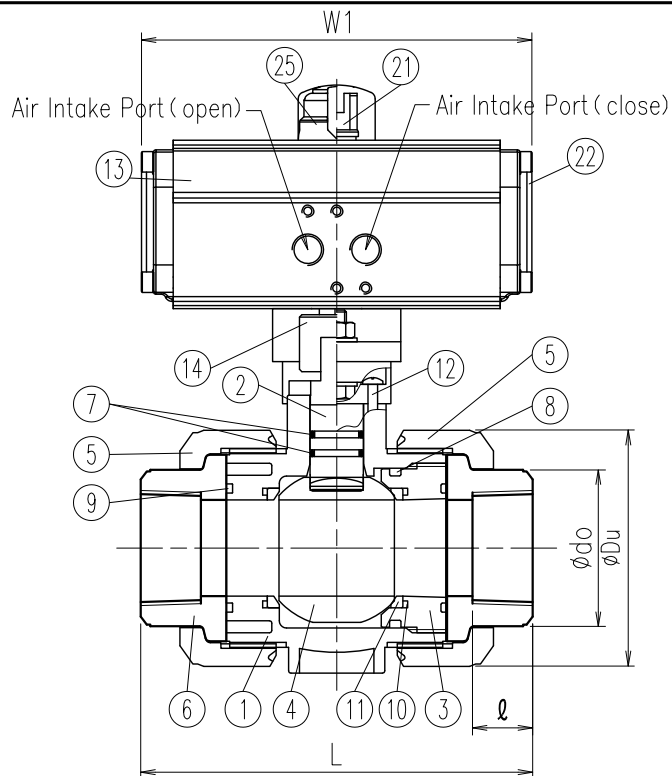
Size	A (B)	ød	L			TS Socket									ødo	h	h2	øDu
						JIS			ASTM			DIN						
			JIS	ASTM	DIN	ød1	1/T	ℓ	ød1	1/T	ℓ	ød1	1/T	ℓ				
□	65 (2 1/2)	65	259±3.0	211±3.0	211±3.0	76.6	1/48	61	73.38	1/84	44.45	75.3	1/220	44	96	232	81	150
□	80 (3)	80	311±3.0	262±3.0	263±3.0	89.6	1/49	64	89.31	1/78	47.63	90.3	1/255	51	113	256	99	186
□	100 (4)	100	390±3.0	315±3.0	315±3.0	114.7	1/56	84	114.76	1/87	57.15	110.4	1/203	61	144	319	121	228

1. Socket dimension is in accordance with the following standard;  
ASTM:ASTM D2467,DIN:DIN2501 PN10/PN16 (ISO7005 PN10)
2. If a fixing insert bolt is used, it should not be screwed in beyond dimension e.

A (B)	W1	W2	Y	Actuator Type	Fixing Insert Nut	
					X	Mxe
65 (2 1/2)	202	89	135.5	AD65	81	M6x10
80 (3)	202	89	135.5	AD65	99.7	M8x10
100 (4)	262	101	174.5	AD80	119.7	M8x10

Client name			Date
Socket Standard	□JIS □ASTM □DIN	Approved by:	
Oil Free	□YES		

ESLON Pneumatic Ball Valve Type S Double Action/TS Socket 65-100A	
Drawing No.	BVMAD651HSE
<b>SEKISUI SEKISUI CHEMICAL CO.,LTD.</b>	



No.	Part Name	Q'TY	Material/Type
1	Body	1	
2	Stem	1	
3	Ball Holder	1	□PVC
4	Ball	1	□PVDF
5	Union Nut	2	
6	Thread	2	
7	Stem O-Ring	2	
8	Ball holder O-Ring	1	□EPDM
9	Union O-Ring	2	□FKM
10	Ball Seat O-Ring	2	
11	Ball Seat	2	PTFE
12	Screw	4	SUS304
13	Cylinder	1	AL6063
14	Connecter	1	AL6061
15	Hexagon Nut	2	SUS304
16	Washer	4	SUS304
17	Hexagon Bolt	2	SUS304
18	Upper Yoke	1	GF-PP
19	Lower Yoke	1	GF-PP
20	Insert Nut	2	C3601
21	Shaft	15-25A	1 S10C
		32-50A	1 SCM435
22	Cover	2	AL12
23	Adjust Bolt	2	SUS304
24	Cover Bolt	8	SUS304
25	Shaft Cover	1	PA+PE

※ Stem O-Ring material will be FKM+PTFE in case of Oil Free.

Dimension Table

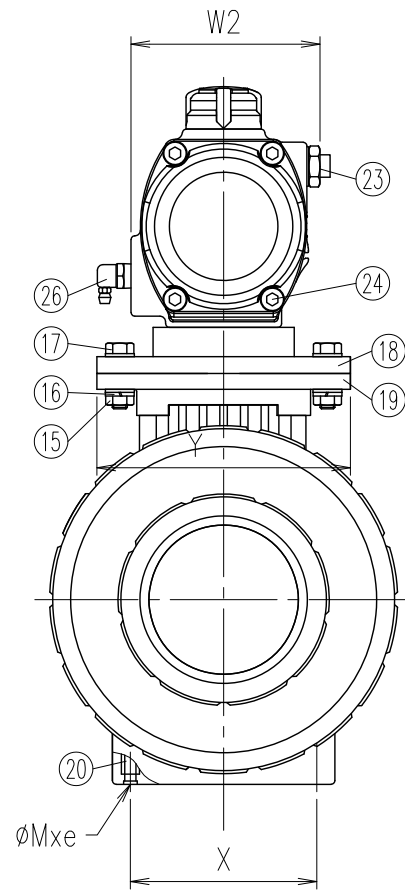
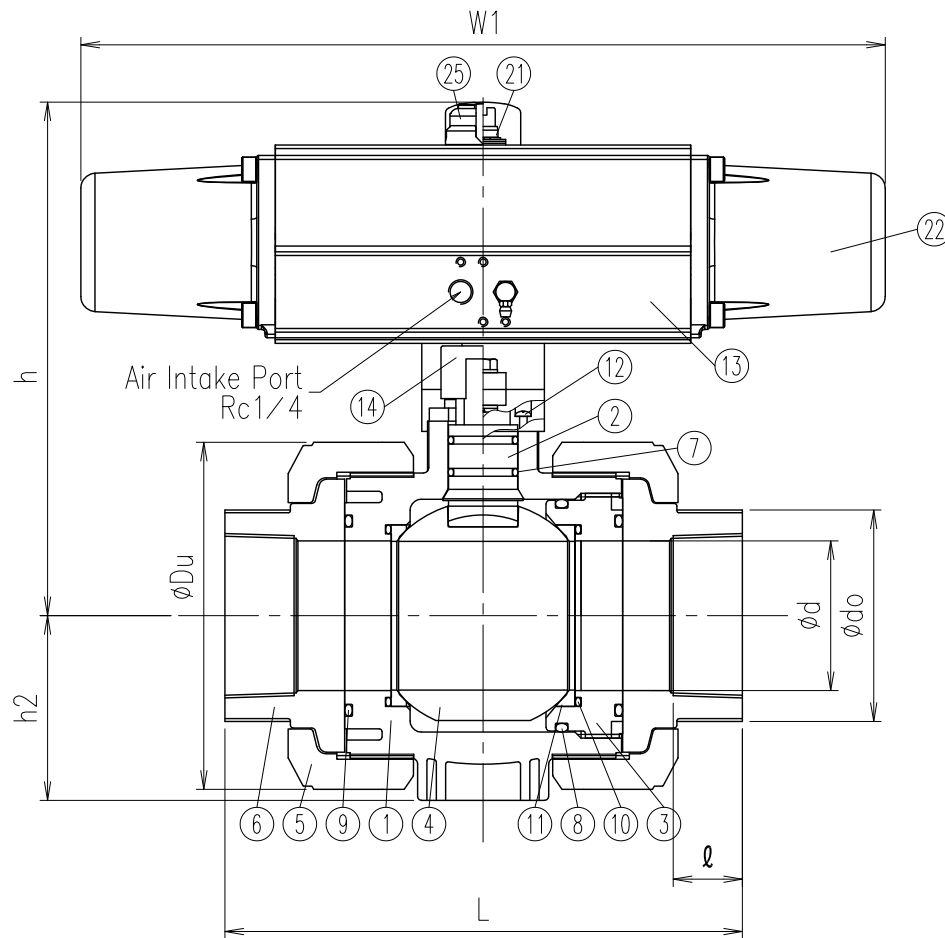
Unit: mm

Size	A (B)	ød	L		Thread						ødo	h	h2	øDu	W1	W2	Y	
					JIS (Rc) DIN (Rc)		ANSI (NPT)		DIN (Rp)									
					Rc	l	NPT	l	Rp	l								
□ 15 (1/2)	15	15	97±3.0	99±3.0	1/2	18	20	1/2	18	1/2	18	30	132	28	49	97	60	68
□ 20 (3/4)	20	20	117±3.0	116±3.0	3/4	18	22	3/4	18	3/4	18	35	137	32	59	97	60	68
□ 25 (1)	25	25	128±3.0	136±3.0	1	23	24	1	23	1	23	44	146	37	67	97	60	86
□ 32 (1·1/4)	32	32	146±3.0	148±3.0	1·1/4	23	25	1·1/4	23	1·1/4	23	54	170	43	81	162	75	86
□ 40 (1·1/2)	40	40	163±3.0	169±3.0	1·1/2	25	28	1·1/2	25	1·1/2	25	65	193	52	98	162	75	117
□ 50 (2)	50	50	188±3.0	196±3.0	2	30	30	2	30	2	30	77	199	63	120	162	75	117

Note) 1. Thread dimension is in accordance with the following standard;  
 JIS: JIS B 0203, ANSI: ANSI B1.20.1  
 DIN: DIN 2501 PN10/PN16 (ISO 7005 PN10)  
 2. If a fixing insert bolt is used, it should not be screwed in beyond dimension e.

A (B)	Actuator Type	Air supply	Fixing Insert Nut	
			X	Mxe
15 (1/2)	RD40	Rc1/8	27	M5x8
20 (3/4)	RD40	Rc1/8	32	M5x8
25 (1)	RD40	Rc1/8	37	M5x8
32 (1·1/4)	AD50	Rc1/4	42	M5x8
40 (1·1/2)	AD50	Rc1/4	57	M6x11
50 (2)	AD50	Rc1/4	67	M6x11

Client name		Date
Thread Standard	□JIS □NPT □DIN	Approved by:
Oil Free	□YES	
ESLON Pneumatic Ball Valve Type S Double Action/Thread Type 15-50A		
Drawing No.	BVMAD1550NE	
<b>SEKISUI SEKISUI CHEMICAL CO., LTD.</b>		



No.	Part Name	Q'TY	Material/Type
1	Body	1	
2	Stem	1	
3	Ball Holder	1	□PVC
4	Ball	1	□PVDF
5	Union Nut	2	
6	Thread	2	
7	Stem O-Ring	2	
8	Ball holder O-Ring	1	□EPDM
9	Union O-Ring	2	□FKM
10	Ball Seat O-Ring	2	
11	Ball Seat	2	PTFE
12	Screw	4	SUS304
13	Actuator	1	AL6063
14	Connector	1	AL6061
15	Hexagon Nut	2	SUS304
16	Washer	4	SUS304
17	Hexagon Bolt	2	SUS304
18	Upper Yoke	1	GF-PP
19	Lower Yoke	1	GF-PP
20	Insert Nut	2	C3601
21	Shaft	1	SCM435
22	Cover	2	AL12
23	Adjust Bolt	2	SUS304
24	Cover Bolt	8	SUS304
25	Shaft Cover	1	PA+PE
26	Cylinder Ventilation Plug	1	C3601+Cr Coated

※ Stem O-Ring material will be FKM+PTFE in case of Oil Free.

Dimension Table

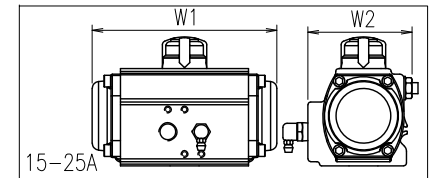
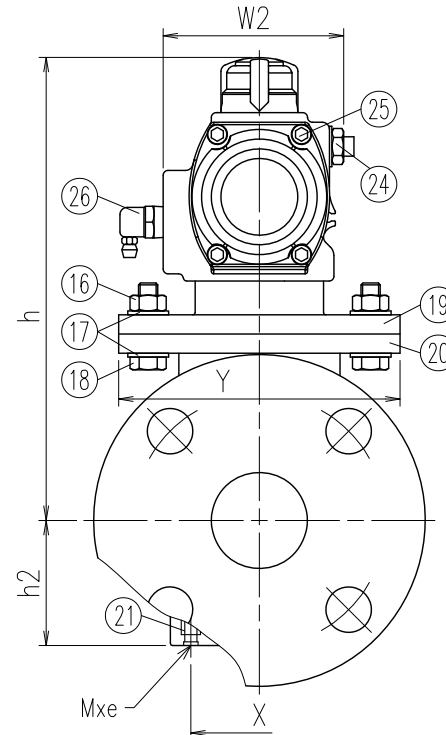
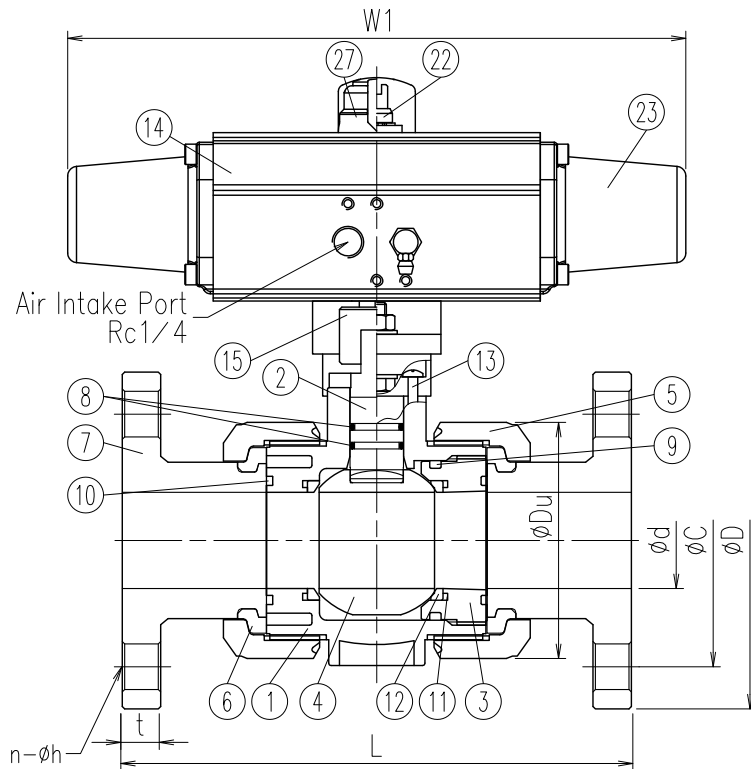
Unit: mm

Size	A(B)	φd	Thread						ℓ	φdo	h	h2	φDu	W1	W2	Y	Actuator Type	Fixing Insert Nut	
			JIS(Rc)、DIN(Rc)		ANSI(NPT)		DIN(Rp)											X	Mxe
			Rc	L	NPT	L	Rp	L											
□ 65(2 1/2)	65	2-1/2	227±3.0	2-1/2	212±3.0	2-1/2	212±3.0	32	96	264	81	150	430	101	135.5	AS80	81	M6x10	
□ 80(3)	80	3	278±3.0	3	261±3.0	3	261±3.0	37	113	275	99	186	430	101	135.5	AS80	99.7	M8x10	
□ 100(4)	100	4	330±3.0	4	315±3.0	4	315±3.0	45	144	341	121	228	500	129	174.5	AS100	119.7	M8x10	

Note) 1. Thread dimension is in accordance with the following standard;  
 JIS:JIS B 0203,ANSI:ANSI B1.20.1 and DIN2501 PN10/PN16 (ISO7005 PN10) for DIN  
 2. If a fixing insert bolt is used, it should not be screwed in beyond dimension e.

Client name		Date
Thread Standard	□JIS □NPT □DIN	Approved by:
Operation Type	□Air To Open (Fail Close) □Air To Close (Fail Open)	
Oil Free	□YES	
ESLON Pneumatic Ball Valve Type S Single Action/Thread Type 65-100A Drawing No.   BVMAS651HNE		
<b>SEKISUI SEKISUI CHEMICAL CO.,LTD.</b>		

No.	Part Name	Q'TY	Material/Type	No.	Part Name	Q'TY	Material/Type
26	Cylinder Ventilation Plug	1	C3601+Cr Coated	1	Body	1	
27	Shaft Cover	1	PA+PE	2	Stem	1	<input type="checkbox"/> PVC
※ Stem O-Ring material will be FKM+PTFE in case of Oil Free.				3	Ball Holder	1	<input type="checkbox"/> HT (JIS: Brown)
				4	Ball	1	<input type="checkbox"/> CPVC (ANSI-DIN: Gray)
				5	Union Nut	2	<input type="checkbox"/> PP
				6	Set Ring	2	<input type="checkbox"/> PVDF
				7	Flange	2	
				8	Stem O-Ring	2	
				9	Ball holder O-Ring	1	<input type="checkbox"/> EPDM
				10	Union O-Ring	2	<input type="checkbox"/> FKM
				11	Ball Seat O-Ring	2	
				12	Ball Seat	2	PTFE
				13	Screw	4	SUS304
				14	Actuator	1	AL6063
				15	Connector	1	AL6061
				16	Hexagon Nut	2	SUS304
				17	Washer	4	SUS304
				18	Hexagon Bolt	2	SUS304
				19	Upper Yoke	1	GF-PP
				20	Lower Yoke	1	GF-PP
				21	Insert Nut	2	C3601
				22	Shaft	1	SCM435
				23	Cover	2	AL12
				24	Adjust Bolt	2	SUS304
				25	Cover Bolt	8	SUS304



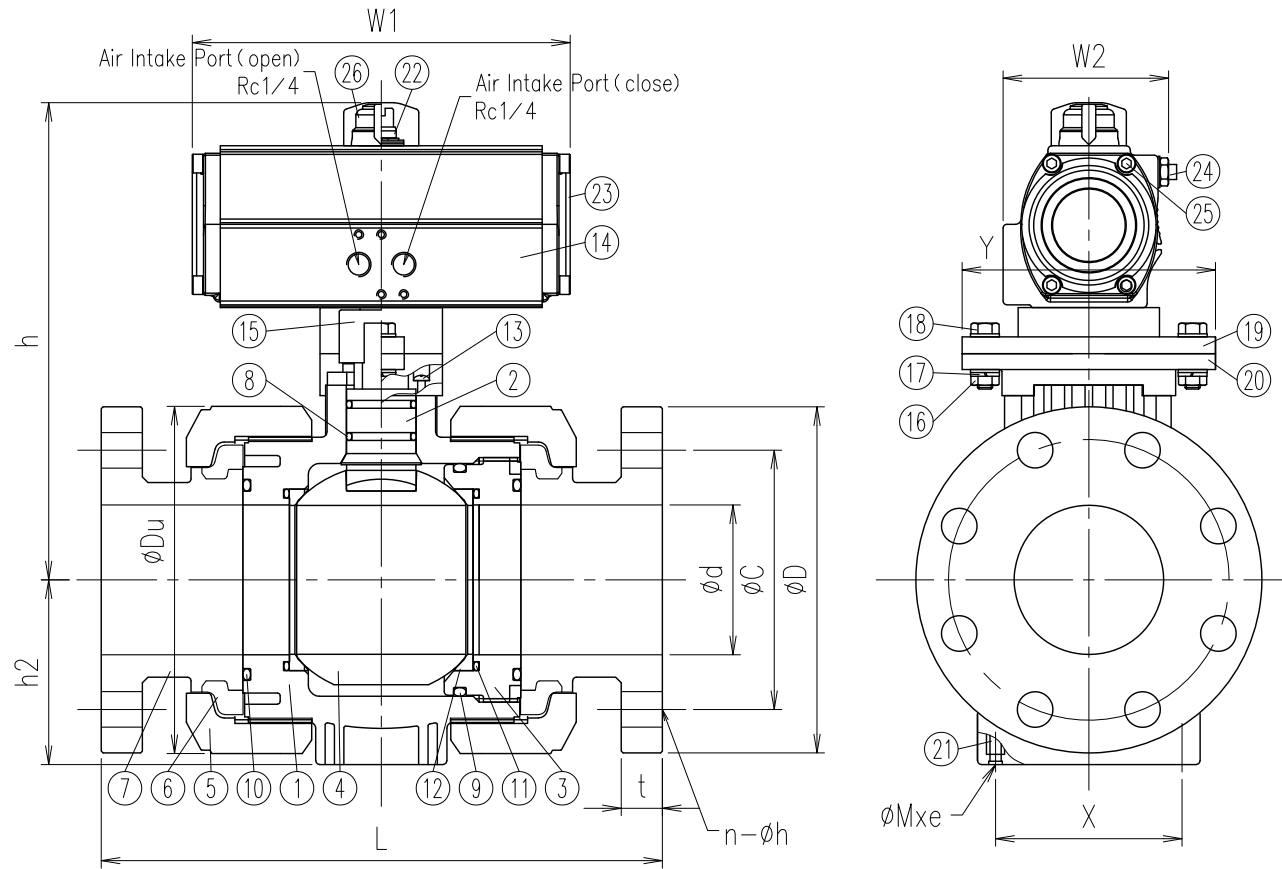
Dimension Table

Unit: mm

Size	A (B)	ød	L	FLANGE												h	h2	øDu	W1	W2	Y	Actuator Type	Fixing Insert Nut	
				JIS10K				ANSI				DIN											X	Mxe
				øD	øC	n-øh	t	øD	øC	n-øh	t	øD	øC	n-øh	t									
<input type="checkbox"/> 15 (1/2)	15	143±1.5	95	70	4-15	14	89.0	60.5	4-16	11.5	95	65	4-14	11	147	28	49	133	75	68	RS50	27	M5x8	
<input type="checkbox"/> 20 (3/4)	20	172±1.5	100	75	4-15	14	98.0	70.0	4-16	13.0	105	75	4-14	12	152	32	59	133	75	68	RS50	32	M5x8	
<input type="checkbox"/> 25 (1)	25	187±1.5	125	90	4-19	14	108.0	79.5	4-16	14.5	115	85	4-14	14	162	37	67	133	75	86	RS50	37	M5x8	
<input type="checkbox"/> 32 (1·1/4)	32	190±1.5	135	100	4-19	16	117.5	89.0	4-16	16.0	140	100	4-18	15	170	43	81	257	75	86	AS50	42	M5x8	
<input type="checkbox"/> 40 (1·1/2)	40	212±1.5	140	105	4-19	16	127.0	98.5	4-16	17.5	150	110	4-18	16	193	52	98	257	75	117	AS50	57	M6x11	
<input type="checkbox"/> 50 (2)	50	234±1.5	155	120	4-19	20	152.0	120.5	4-19	19.5	165	125	4-18	18	216	63	120	314	89	117	AS65	67	M6x11	

Note) 1. Flange dimension is in accordance with the following standard;  
 JIS B 2220 for JIS10K, ANSI B16.5 for ANSI and DIN EN 1092-1 PN10 for DIN  
 2. If a fixing insert bolt is used, it should not be screwed in beyond dimension e.

Client name		Date
Flange Standard	<input type="checkbox"/> JIS10K <input type="checkbox"/> ANSI <input type="checkbox"/> DIN	Approved by:
Operation Type	<input type="checkbox"/> Air To Open (Fail Close) <input type="checkbox"/> Air To Close (Fail Open)	
Oil Free	<input type="checkbox"/> YES	
ESLON Pneumatic Ball Valve Type S Single Action/Flange Type 15-50A		
Drawing No.	BVMAS1550FE	
<b>SEKISUI SEKISUI CHEMICAL CO.,LTD.</b>		



No.	Part Name	Q'TY	Material/Type
1	Body	1	
2	Stem	1	□PVC
3	Ball Holder	1	□HT (JIS: Brown)
4	Ball	1	□CPVC (ANSI-DIN: Gray)
5	Union Nut	2	□PP
6	Set Ring	2	□PVDF
7	Flange	2	
8	Stem O-Ring	2	
9	Ball holder O-Ring	1	□EPDM
10	Union O-Ring	2	□FKM
11	Ball Seat O-Ring	2	
12	Ball Seat	2	PTFE
13	Screw	4	SUS304
14	Cylinder	1	AL6063
15	Connector	1	AL6061
16	Hexagon Nut	2	SUS304
17	Washer	4	SUS304
18	Hexagon Bolt	2	SUS304
19	Upper Yoke	1	GF-PP
20	Lower Yoke	1	GF-PP
21	Insert Nut	2	C3601
22	Shaft	1	SCM435
23	Cover	2	AL12
24	Adjust Bolt	2	SUS304
25	Cover Bolt	8	SUS304
26	Shaft Cover	1	PA+PE

\* Stem O-Ring material will be FKM+PTFE in case of Oil Free.

Dimension Table

Unit: mm

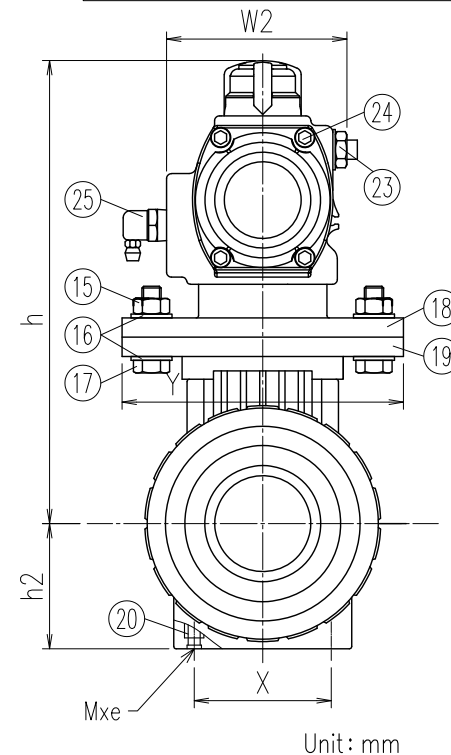
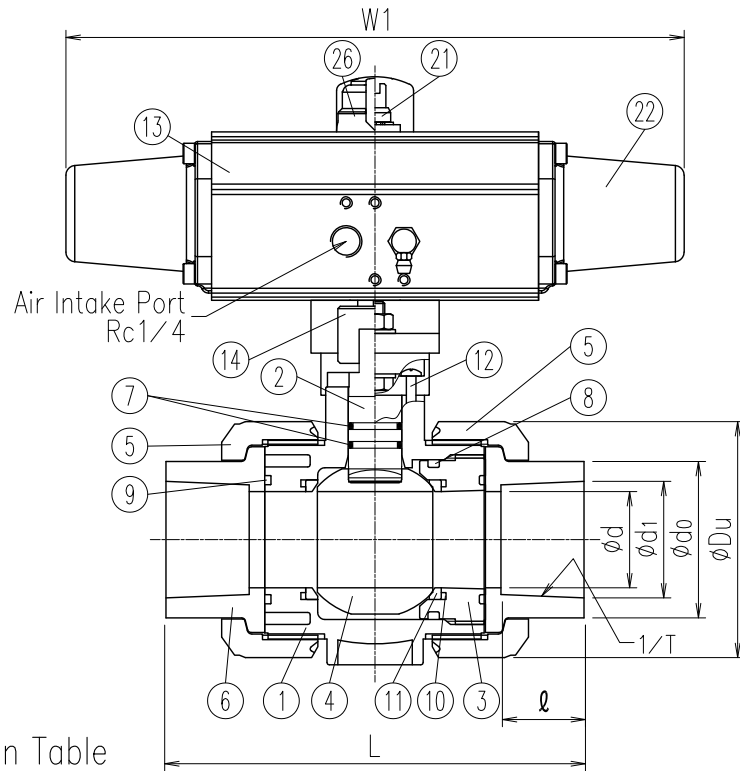
Size	A(B)	φd	L		FLANGE												h	h2	φDu
					JIS10K				ANSI				DIN						
			PVC, HT	PP,PVDF	φD	φC	n-φh	t	φD	φC	n-φh	t	φD	φC	n-φh	t			
□ 65 (2 1/2)	65	259±3.0	257±3.0	175	140	4-19	22	178	139.5	4-20	22.5	185	145	4-18	22	232	81	150	
□ 80 (3)	80	304±3.0	301±3.0	185	150	8-19	22	191	152.5	4-20	24.0	200	160	8-18	23	256	99	186	
□ 100 (4)	100	372±3.0	367±3.0	210	175	8-19	24	229	190.5	8-20	24.0	220	180	8-18	23	319	121	228	

1. Flange dimension is in accordance with the following standard;  
JIS B 2220 for JIS10K, ANSI B16.5 for ANSI and  
DIN2501 PN10/PN16 (ISO7005 PN10) for DIN
2. If a fixing insert bolt is used, it should not be screwed in beyond dimension e.

A(B)	W1	W2	Y	Actuator Type	Fixing Insert Nut	
					X	Mxe
65 (2 1/2)	202	89	135.5	AD65	81	M6x10
80 (3)	202	89	135.5	AD65	99.7	M8x10
100 (4)	262	101	174.5	AD80	119.7	M8x10

Client name		Date
Flange Standard	□JIS10K □ANSI □DIN	Approved by:
Oil Free	□YES	
ESLON Pneumatic Ball Valve Type S Double Action/Flange Type 65-100A		
Drawing No.	BVMAD651HFE	
<b>SEKISUI SEKISUI CHEMICAL CO.,LTD.</b>		





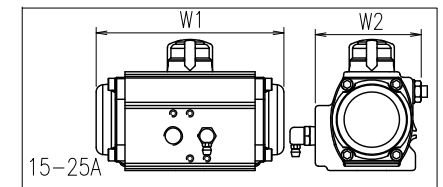
Dimension Table

Size	A (B)	φd	L			TS Socket						φdo	h	h2	φDu			
			JIS	ASTM	DIN	JIS			ASTM							DIN		
						φd1	1/T	ℓ	φd1	1/T	ℓ					φd1	1/T	ℓ
□ 15 (1/2)	15	109±3.0	103±3.0	92±3.0	22	1/37	22	22	1/72	22	20	1/65	16	33	147	28	49	
□ 20 (3/4)	20	132±3.0	119±3.0	107±3.0	26	1/42	25	27	1/85	25	25	1/80	19	35	152	32	59	
□ 25 (1)	25	143±3.0	133±3.0	121±3.0	32	1/43	29	34	1/75	29	32	1/95	22	44	162	37	67	
□ 32 (1·1/4)	32	166±3.0	147±3.0	137±3.0	38	1/37	32	42	1/84	32	40	1/115	26	54	170	43	81	
□ 40 (1·1/2)	40	175±3.0	171±3.0	161±3.0	49	1/38	35	49	1/78	35	50	1/140	31	66	193	52	98	
□ 50 (2)	50	203±3.0	188±3.0	189±3.0	61	1/34	38	61	1/83	38	63	1/175	38	77	216	63	120	

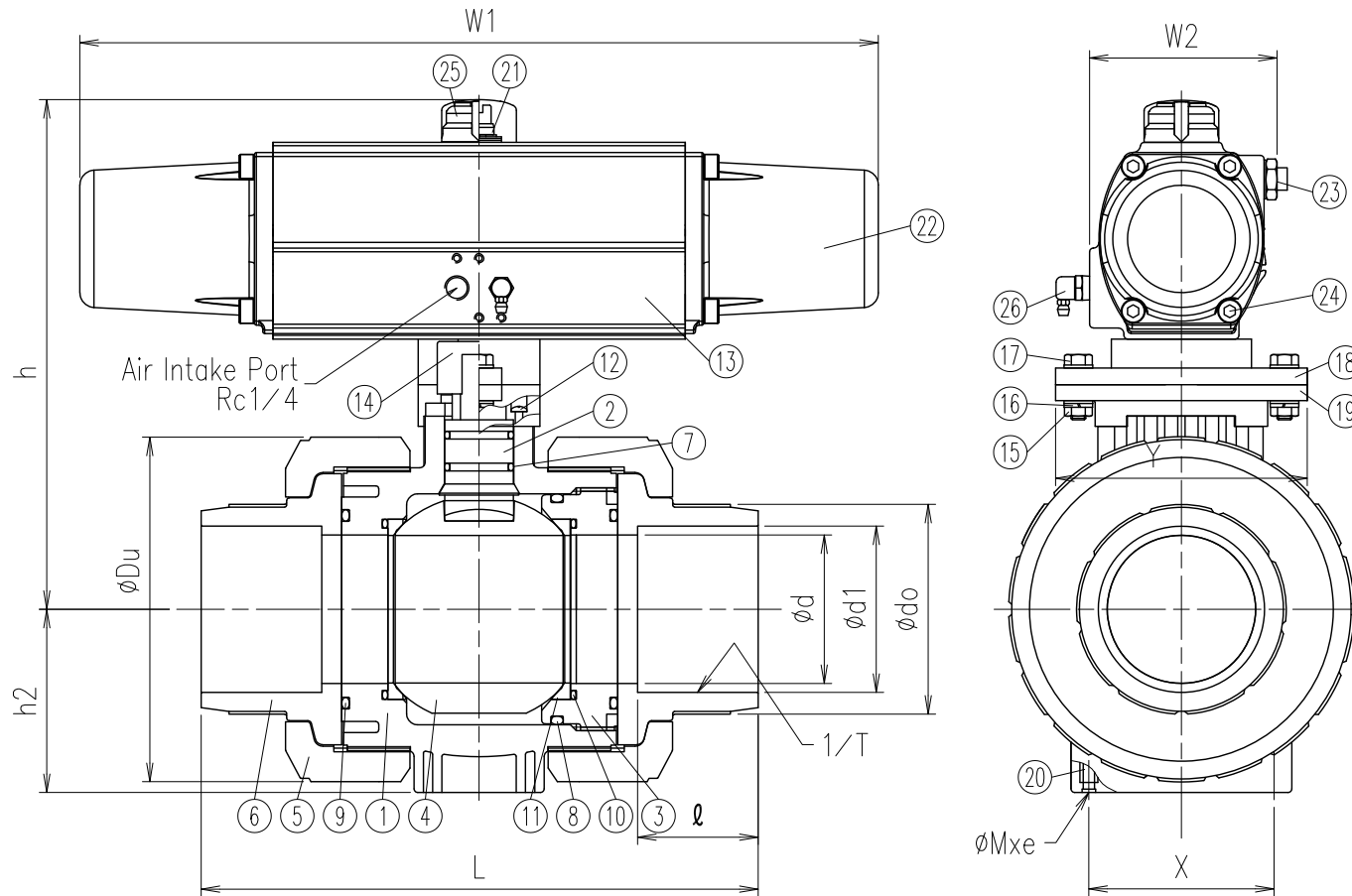
- Socket dimension is in accordance with the following standard;  
ASTM:ASTM D2467, DIN:DIN2501 PN10/PN16 (ISO7005 PN10)
- If a fixing insert bolt is used, it should not be screwed in beyond dimension e.

A (B)	W1	W2	Y	Actuator Type	Fixing Insert Nut	
					X	Mxe
15 (1/2)	133	75	68	RS50	27	M5x8
20 (3/4)	133	75	68	RS50	32	M5x8
25 (1)	133	75	86	RS50	37	M5x8
32 (1·1/4)	257	75	86	AS50	42	M5x8
40 (1·1/2)	257	75	117	AS50	57	M6x11
50 (2)	314	89	117	AS65	67	M6x11

No.	Part Name	Q'TY	Material/Type	No.	Part Name	Q'TY	Material/Type
* Stem O-Ring material will be FKM+PTFE in case of Oil Free.							
1	Body	1		1	Body	1	
2	Stem	1		2	Stem	1	□PVC
3	Ball Holder	1		3	Ball Holder	1	□HT (JIS: Brown)
4	Ball	1		4	Ball	1	□CPVC (ANSI-DIN: Gray)
5	Union Nut	2		5	Union Nut	2	
6	TS Socket	2		6	TS Socket	2	
7	Stem O-Ring *	2		7	Stem O-Ring *	2	
8	Ball holder O-Ring	1		8	Ball holder O-Ring	1	□EPDM
9	Union O-Ring	2		9	Union O-Ring	2	□FKM
10	Ball Seat O-Ring	2		10	Ball Seat O-Ring	2	
11	Ball Seat	2		11	Ball Seat	2	PTFE
12	Screw	4		12	Screw	4	SUS304
13	Actuator	1		13	Actuator	1	AL6063
14	Connector	1		14	Connector	1	AL6061
15	Hexagon Nut	2		15	Hexagon Nut	2	SUS304
16	Washer	4		16	Washer	4	SUS304
17	Hexagon Bolt	2		17	Hexagon Bolt	2	SUS304
18	Upper Yoke	1		18	Upper Yoke	1	GF-PP
19	Lower Yoke	1		19	Lower Yoke	1	GF-PP
20	Insert Nut	2		20	Insert Nut	2	C3601
21	Shaft	1		21	Shaft	1	SCM435
22	Cover	2		22	Cover	2	AL12
23	Adjust Bolt	2		23	Adjust Bolt	2	SUS304
24	Cover Bolt	8		24	Cover Bolt	8	SUS304
25	Cylinder Ventilation Plug	1		25	Cylinder Ventilation Plug	1	C3601+Cr Coated
26	Shaft Cover	1		26	Shaft Cover	1	PA+PE



Client name		Date
Socket Standard	□JIS □ASTM □DIN	Approved by:
Operation Type	□Air To Open (Fail Close) □Air To Close (Fail Open)	
Oil Free	□YES	
ESLON Pneumatic Ball Valve Type S Single Action/TS Socket 15-50A		
Drawing No.	BVMAS1550SE	
<b>SEKISUI SEKISUI CHEMICAL CO.,LTD.</b>		



No.	Part Name	Q'TY	Material/Type
1	Body	1	
2	Stem	1	□PVC
3	Ball Holder	1	□HT (JIS: Brown)
4	Ball	1	□PVC
5	Union Nut	2	(ANSI-DIN: Gray)
6	TS Socket	2	
7	Stem O-Ring	2	
8	Ball holder O-Ring	1	□EPDM
9	Union O-Ring	2	□FKM
10	Ball Seat O-Ring	2	
11	Ball Seat	2	PTFE
12	Screw	4	SUS304
13	Actuator	1	AL6063
14	Connector	1	AL6061
15	Hexagon Nut	2	SUS304
16	Washer	4	SUS304
17	Hexagon Bolt	2	SUS304
18	Upper Yoke	1	GF-PP
19	Lower Yoke	1	GF-PP
20	Insert Nut	2	C3601
21	Shaft	1	SCM435
22	Cover	2	AL12
23	Adjust Bolt	2	SUS304
24	Cover Bolt	8	SUS304
25	Shaft Cover	1	PA+PE
26	Cylinder Ventilation Plug	1	C3601+Cr Coated

※ Stem O-Ring material will be FKM+PTFE in case of Oil Free.

Dimension Table

Unit: mm

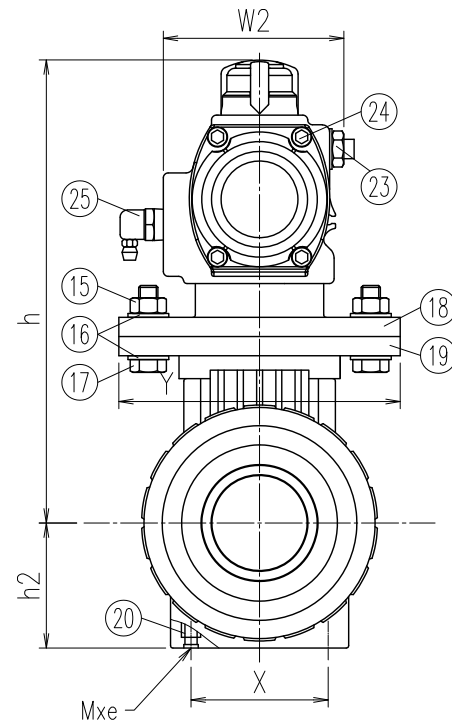
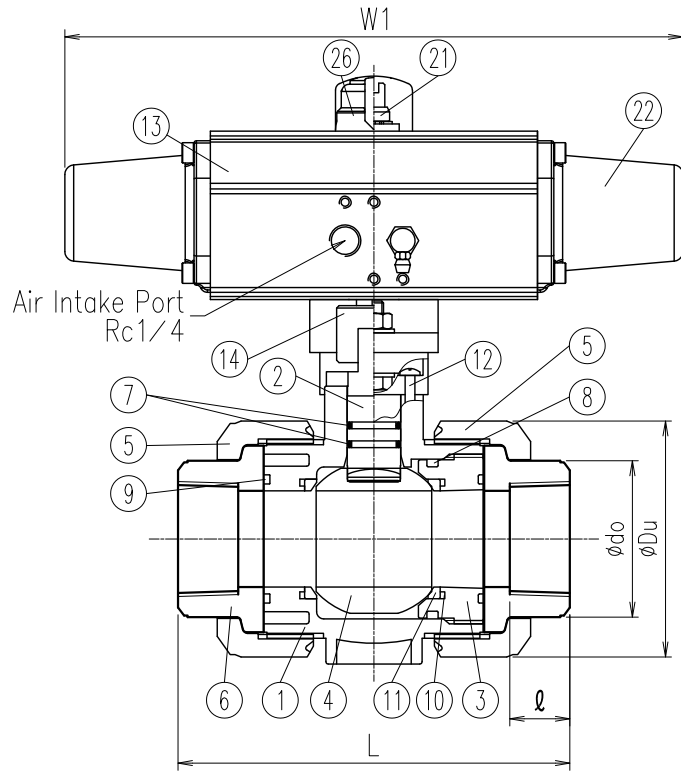
Size	A (B)	ød	L			TS Socket									ødo	h	h2	øDu
						JIS			ASTM			DIN						
			JIS	ASTM	DIN	ød1	1/T	ℓ	ød1	1/T	ℓ	ød1	1/T	ℓ				
□	65 (2 1/2)	65	259±3.0	211±3.0	211±3.0	76.6	1/48	61	73.38	1/84	44.45	75.3	1/220	44	96	264	81	150
□	80 (3)	80	311±3.0	262±3.0	263±3.0	89.6	1/49	64	89.31	1/78	47.63	90.3	1/255	51	113	275	99	186
□	100 (4)	100	390±3.0	315±3.0	315±3.0	114.7	1/56	84	114.76	1/87	57.15	110.4	1/203	61	144	341	121	228

- Socket dimension is in accordance with the following standard;  
ASTM:ASTM D2467. DIN:DIN2501 PN10/PN16 (ISO7005 PN10)
- If a fixing insert bolt is used, it should not be screwed in beyond dimension e.

A (B)	W1	W2	Y	Actuator Type	Fixing Insert Nut	
					X	Mxe
65 (2 1/2)	430	101	135.5	AS80	81	M6x10
80 (3)	430	101	135.5	AS80	99.7	M8x10
100 (4)	500	129	174.5	AS100	119.7	M8x10

Client name			Date
Socket Standard	□JIS □ASTM □DIN		Approved by:
Operation Type	□Air To Open (Fail Close) □Air To Close (Fail Open)		
Oil Free	□YES		

ESLON Pneumatic Ball Valve Type S Single Action/TS Socket 65-100A	
Drawing No.	BVMAS651HSE
<b>SEKISUI SEKISUI CHEMICAL CO.,LTD.</b>	



No.	Part Name	Q'TY	Material/Type
1	Body	1	
2	Stem	1	
3	Ball Holder	1	<input type="checkbox"/> PVC
4	Ball	1	<input type="checkbox"/> PVDF
5	Union Nut	2	
6	Thread	2	
7	Stem O-Ring *	2	
8	Ball holder O-Ring	1	<input type="checkbox"/> EPDM
9	Union O-Ring	2	<input type="checkbox"/> FKM
10	Ball Seat O-Ring	2	
11	Ball Seat	2	PTFE
12	Screw	4	SUS304
13	Actuator	1	AL6063
14	Connecter	1	AL6061
15	Hexagon Nut	2	SUS304
16	Washer	4	SUS304
17	Hexagon Bolt	2	SUS304
18	Upper Yoke	1	GF-PP
19	Lower Yoke	1	GF-PP
20	Insert Nut	2	C3601
21	Shaft	1	SCM435
22	Cover	2	AL12
23	Adjust Bolt	2	SUS304
24	Cover Bolt	8	SUS304
25	Cylinder Ventilation Plug	1	C3601+Cr Coated
26	Shaft Cover	1	PA+PE

\* Stem O-Ring material will be FKM+PTFE in case of Oil Free.

Dimension Table

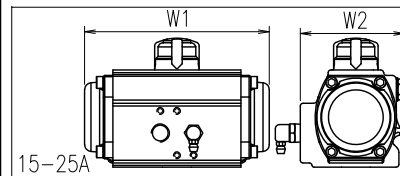
Unit: mm

Size	A (B)	$\phi d$	L		Thread						$\phi do$	h	h2	$\phi Du$	W1	W2	Y	
					JIS (Rc) DIN (Rc)		ANSI (NPT)		DIN (Rp)									
					Rc	$\ell$	NPT	$\ell$	Rp	$\ell$								
<input type="checkbox"/> 15 (1/2)	15	15	97±3.0	99±3.0	1/2	18	20	1/2	18	1/2	18	30	147	28	49	133	75	68
<input type="checkbox"/> 20 (3/4)	20	20	117±3.0	116±3.0	3/4	18	22	3/4	18	3/4	18	35	152	32	59	133	75	68
<input type="checkbox"/> 25 (1)	25	25	128±3.0	136±3.0	1	23	24	1	23	1	23	44	162	37	67	133	75	86
<input type="checkbox"/> 32 (1·1/4)	32	32	146±3.0	148±3.0	1·1/4	23	25	1·1/4	23	1·1/4	23	54	170	43	81	257	75	86
<input type="checkbox"/> 40 (1·1/2)	40	40	163±3.0	169±3.0	1·1/2	25	28	1·1/2	25	1·1/2	25	65	193	52	98	257	75	117
<input type="checkbox"/> 50 (2)	50	50	188±3.0	196±3.0	2	30	30	2	30	2	30	77	216	63	120	314	89	117

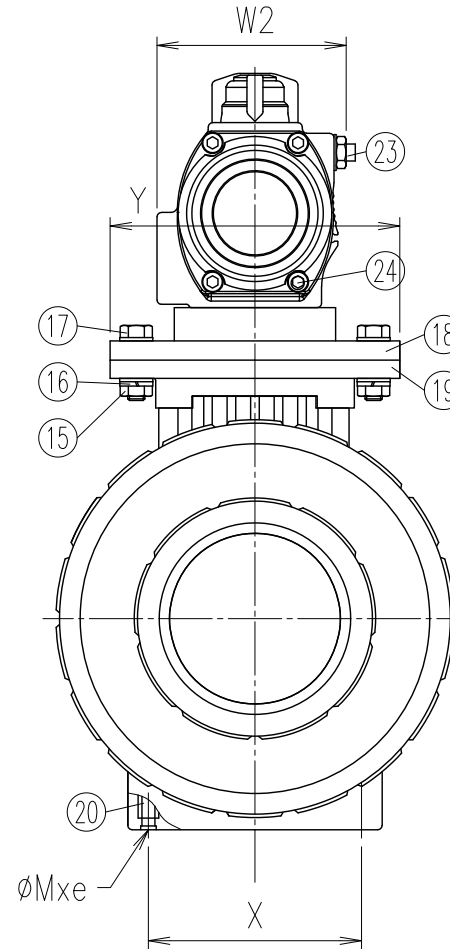
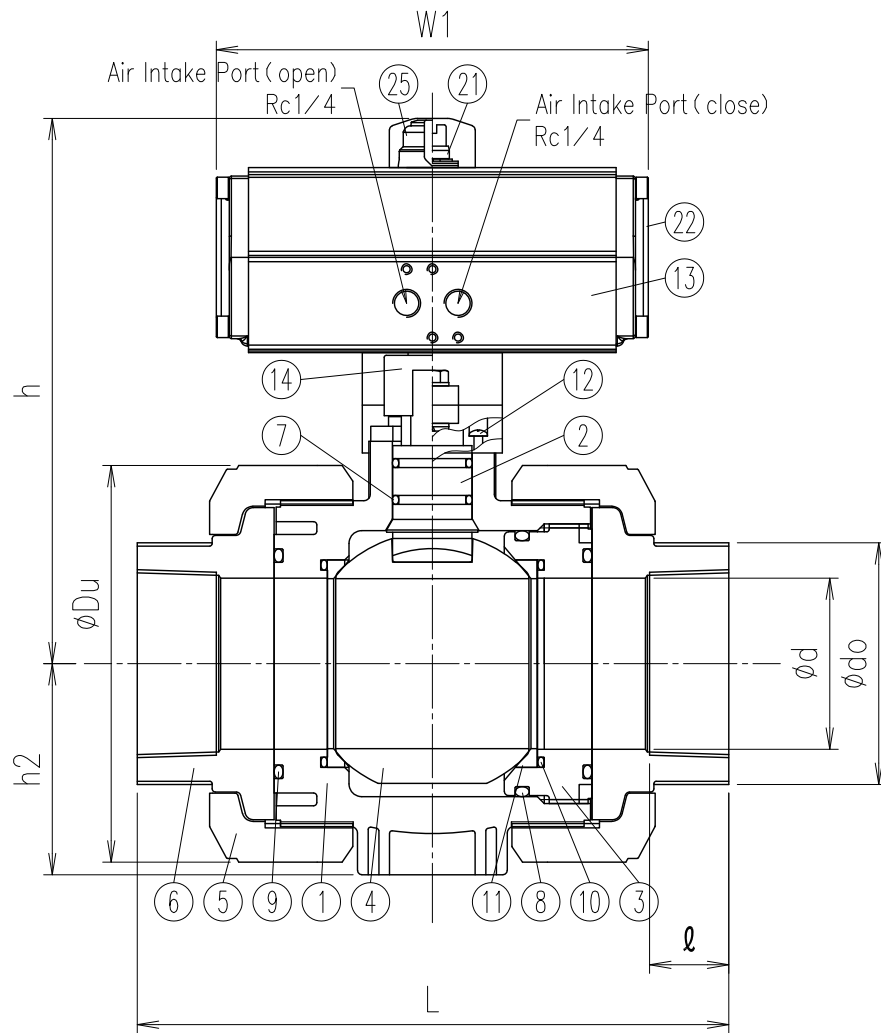
Note)

1. Thread dimension is in accordance with the following standard;  
JIS: JIS B 0203, ANSI: ANSI B1.20.1  
DIN: DIN 2501 PN10/PN16 (ISO 7005 PN10)
2. If a fixing insert bolt is used, it should not be screwed in beyond dimension e.

A (B)	Actuator Type	Fixing Insert Nut	
		X	Mxe
15 (1/2)	RS50	27	M5x8
20 (3/4)	RS50	32	M5x8
25 (1)	RS50	37	M5x8
32 (1·1/4)	AS50	42	M5x8
40 (1·1/2)	AS50	57	M6x11
50 (2)	AS65	67	M6x11



Client name		Date
Thread Standard	<input type="checkbox"/> JIS <input type="checkbox"/> NPT <input type="checkbox"/> DIN	Approved by:
Operation Type	<input type="checkbox"/> Air To Open (Fail Close) <input type="checkbox"/> Air To Close (Fail Open)	
Oil Free	<input type="checkbox"/> YES	
ESLON Pneumatic Ball Valve Type S Single Action/Thread Type 15-50A		
Drawing No.	BVMAS1550NE	
<b>SEKISUI SEKISUI CHEMICAL CO., LTD.</b>		



No.	Part Name	Q'TY	Material/Type
1	Body	1	
2	Stem	1	
3	Ball Holder	1	□PVC
4	Ball	1	□PVDF
5	Union Nut	2	
6	Flange	2	
7	Stem O-Ring	2	
8	Ball holder O-Ring	1	□EPDM
9	Union O-Ring	2	□FKM
10	Ball Seat O-Ring	2	
11	Ball Seat	2	PTFE
12	Screw	4	SUS304
13	Cylinder	1	AL6063
14	Connector	1	AL6061
15	Hexagon Nut	2	SUS304
16	Washer	4	SUS304
17	Hexagon Bolt	2	SUS304
18	Upper Yoke	1	GF-PP
19	Lower Yoke	1	GF-PP
20	Insert Nut	2	C3601
21	Shaft	1	SCM435
22	Cover	2	AL12
23	Adjust Bolt	2	SUS304
24	Cover Bolt	8	SUS304
25	Shaft Cover	1	PA+PE

※ Stem O-Ring material will be FKM+PTFE in case of Oil Free.

Dimension Table

Unit: mm

Size	A(B)	phi d	Thread						l	phi do	h	h2	phi Du	W1	W2	Y	Actuator Type	Fixing Insert Nut	
			JIS (Rc) , DIN (Rc)		ANSI (NPT)		DIN (Rp)											X	Mxe
			Rc	L	NPT	L	Rp	L											
□ 65 (2 1/2)	65	2-1/2	227±3.0	2-1/2	212±3.0	2-1/2	212±3.0	32	96	232	81	150	202	89	135.5	AD65	81	M6x10	
□ 80 (3)	80	3	278±3.0	3	261±3.0	3	261±3.0	37	113	256	99	186	202	89	135.5	AD65	99.7	M8x10	
□ 100 (4)	100	4	330±3.0	4	315±3.0	4	315±3.0	45	144	319	121	228	262	101	174.5	AD80	119.7	M8x10	

Note) 1. Thread dimension is in accordance with the following standard;  
 JIS:JIS B 0203,ANSI:ANSI B1.20.1 and DIN2501 PN10/PN16 (ISO7005 PN10) for DIN  
 2. If a fixing insert bolt is used, it should not be screwed in beyond dimension e.

Client name		Date
Thread Standard	□JIS □NPT □DIN	Approved by:
Oil Free	□YES	
ESLON Pneumatic Ball Valve Type S Double Action/Thread Type 65-100A		
Drawing No.	BVMAD651HNE	
<b>SEKISUI SEKISUI CHEMICAL CO.,LTD.</b>		