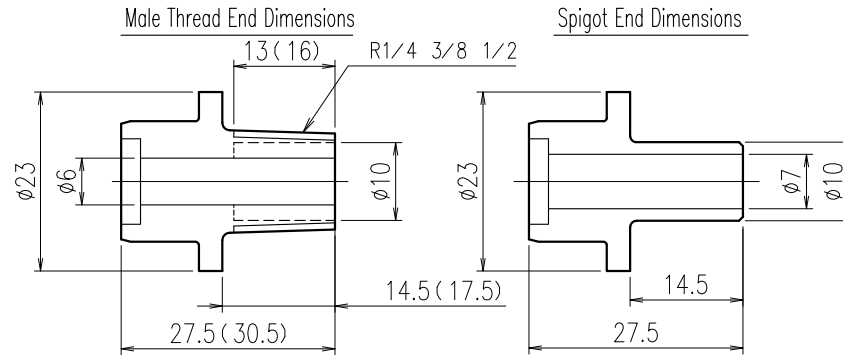
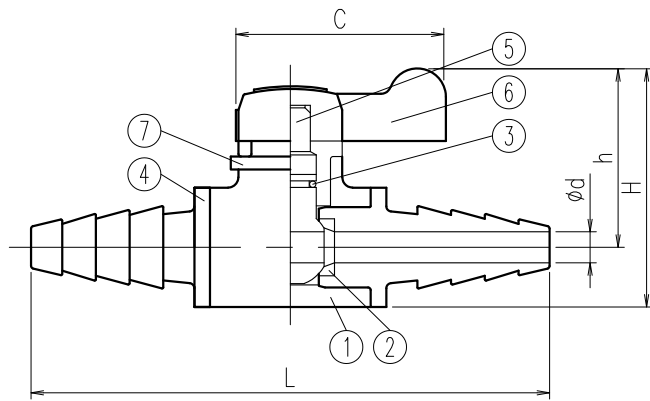


No.	Part Name	Q'TY	Material/Type
1	Body	1	PVC
2	Ball Seat	2	□EPDM
3	O-ring	1	□FKM
4	Socket	1	PVC
5	Ball	1	PVC
6	Handle	1	ABS
7	Stem Stopper	1	PVC



Notes) Dashed line, () Dimension ... R1/2

Fig. -1

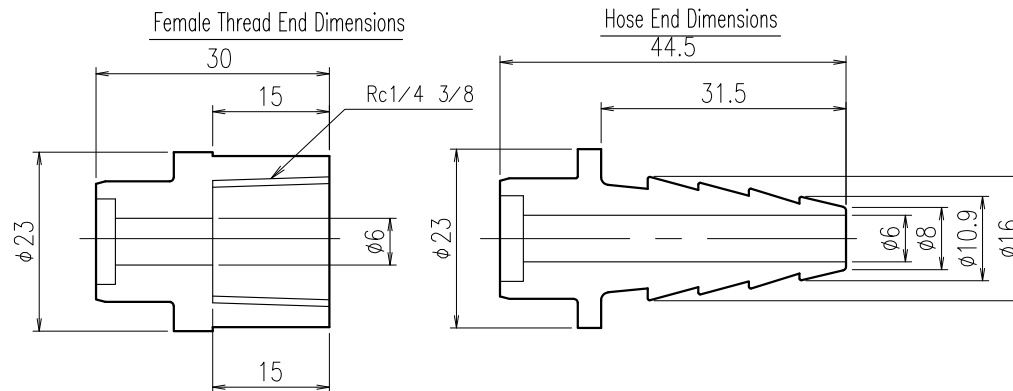
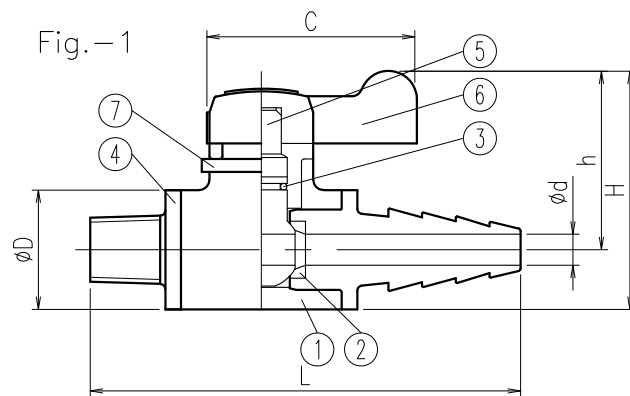


Table-1 Combination of Connection Ends

Combination of Connection Ends	Distance L±1
●HoseXHose	100
●Male ThreadX Hose Notes) The attachment direction of a faucet becomes as it is shown in Fig. -1.	83 (86)
Male ThreadX Male Thread	66 (72)
Female ThreadX Female Thread	71
SpigotX Spigot	66
Male ThreadX Female Thread	69 (72)
Male ThreadX Spigot	66 (69)
Female ThreadX Hose	86
Female ThreadX Spigot	69
HoseX Spigot	83

Dimension Table

Unit:mm

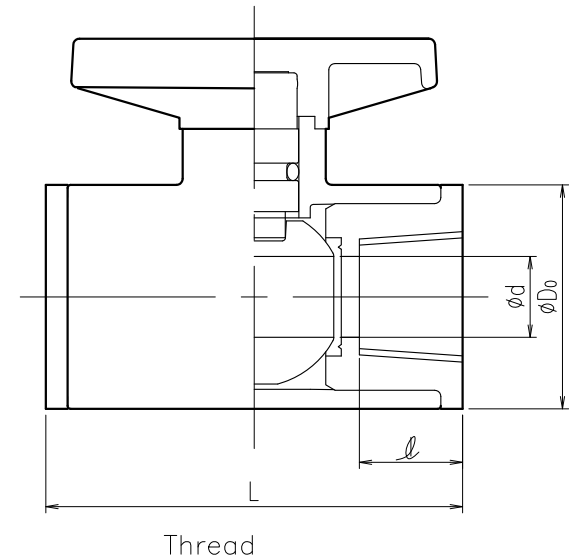
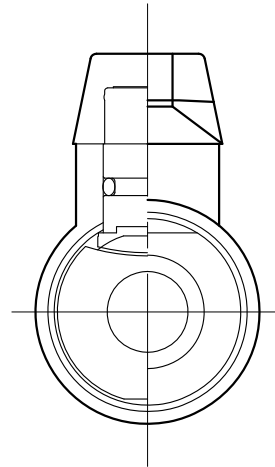
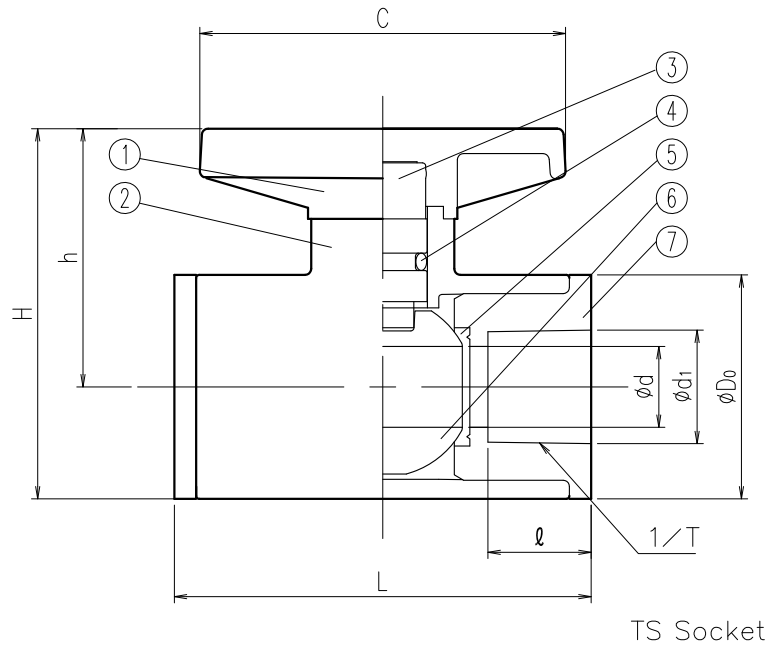
A (B)	ϕd	L	ϕD	H (Ref.)	h (Ref.)	C
6 (1/8)	Refer to Drawing	Refer to Table-1	23	47	35	40

- 1) ● :Standard combination
2) () :Male Screw 1/2
3) Please specify the attachment direction of a faucet products other than a standard combination.

Client name		Date
Rinsed	<input type="checkbox"/> YES	Approved by:

ESLON
MINI BALL VALVE 6A
Drawing No. MBV06JE
SEKISUI SEKISUI CHEMICAL CO.,LTD.

No.	Part Name	Q'TY	Material/Type
1	Handle	1	ABS
2	Body	1	PVC
3	Stem	1	PVC
4	O-Ring	1	□EPDM □FKM
5	Ball Seat	2	PTFE
6	Ball	1	PVC
7	Socket □Rc1/2 □TS 13A □TS 15A	2	PVC



Dimension Table

Unit:mm

size	A(B)	φd	L	H	h	φDo	C	Thread		TS Socket		
								Rc	ℓ	φd1	1/T	ℓ
□ 13(3/8)	13	13	67	60	42	35	60	-	-	18.25	1/33	16.5
□ 15(1/2)	13	13	67	60	42	35	60	Rc1/2	16	22.25	1/33	16.5

Client name		Date
Rinsed	<input type="checkbox"/> YES	Approved by:
ESLON MINI BALL VALVE TS Socket / Female Thread Drawing No. MBV1315E		
SEKISUI SEKISUI CHEMICAL CO.,LTD.		