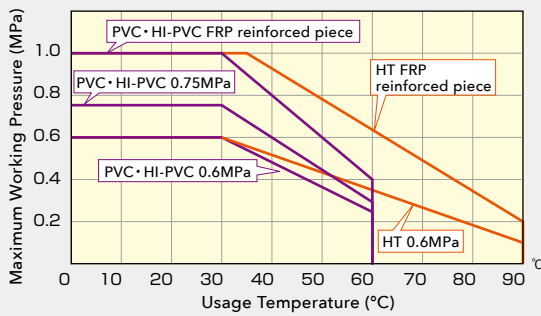


# ESLON™ LARGE DIAMETER TS FITTINGS

- Suitable for pressurized pipes and drainage pipes at factories, processing plants, and agricultural facilities.
- Highly resistant to chemicals and corrosion.
- Compact size reduces construction costs.



## Usage Temperature and Maximum Working Pressure



**Maximum Working Pressure**  
 ● 0.6MPa at 20°C  
 ● 0.75MPa at 20°C  
 ● FRPreinforced piece: 1.0MPa at 20°C

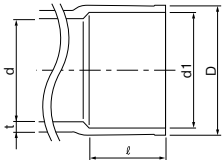
## Maximum Working Pressure (Room Temperature)

Material	PVC	HI-PVC	HT (CPVC)
Size 200	0.75MPa	0.75MPa	0.6MPa
Size 250	0.75MPa	0.75MPa	0.6MPa
Size 300	0.6MPa	0.6MPa	0.6MPa

\*All FRP reinforced pieces have a 1.0 MPa.

## LARGE DIAMETER TS FITTINGS SPECIFICATIONS

### Socket Dimensions



● 200A~300A Unit:mm

Size	D	t	d1		ℓ	d
			PVC HI-PVC*	HT (CPVC)		
200A	243	13.0	217.4	216.9	145	196
250A	300	14.5	268.6	268.1	175	242
300A	356	16.0	319.8	319.4	185	288

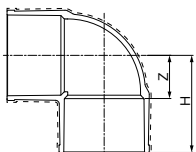
Note: HT (C-PVC) 90° elbow is \* dimension.

### Reducing Blanch

Size	D	d1	ℓ	d
75A	106	89.6	64	77
100A	134	114.7	84	102
150A	189	166.0	132	146

Unit:mm

### 90° Elbow



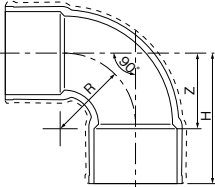
Unit:mm

Size	H	Z	Reference weight (PVC kg/unit)	Item No.					
				TS	HI	HT	FRP Reinforced Piece		
							TS	HI	HT
200A	262	145	6.6	TSL2H6K	HIL2H6K	HTL2H6K	FTSL2H	FHIL2H	FHTL2H
250A	318	175	10.8	TSL2F6K	HIL2F6K	HTL2F6K	FTSL2F	FHIL2F	FHTL2F
300A	355	185	15.5	TSL3H6K	HIL3H6K	HTL3H6K	FTSL3H	FHIL3H	FHTL3H

\*Dashed line shows 1.0MPa FRP specifications.

## 90° Bend

Unit:mm

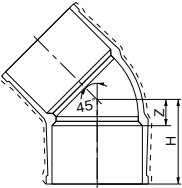


Size	H	Z	R	Weight (PVC) kg/pc	Item No.					
					TS	HI	HT	FRP reinforced type		
								TS	HI	HT
200A	341	196	196	7.6	TSSL2H6	HILL2H6	HTLL2H6	FTSSL2H	FHILL2H	FHTLL2H
250A	428	253	242	14.4	TSSL2F6	HILL2F6	HTLL2F6	FTSSL2F	FHILL2F	FHTLL2F
300A	441	256	242	20.3	TSSL3H6	HILL3H6	HTLL3H6	FTSSL3H	FHILL3H	FHTLL3H

※Dashed Shape for Fiber Reinforced 1.0MPa fitting.

## 45° Elbow

Unit:mm

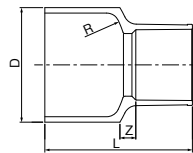


Size	H	Z	Weight (PVC) kg/pc	Item No.					
				TS	HI	HT	FRP reinforced type		
							TS	HI	HT
200A	205	60	5.6	TS4L2H6	HI4L2H6	HT4L2H6	FTS4L2H	FHI4L2H	FHT4L2H
250A	254	79	9.0	TS4L2F6	HI4L2F6	HT4L2F6	FTS4L2F	FHI4L2F	FHT4L2F
300A	280	95	13.6	TS4L3H6	HI4L3H6	HT4L3H6	FTS4L3H	FHI4L3H	FHT4L3H

※Dashed Shape for Fiber Reinforced 1.0MPa fitting.

## Bush

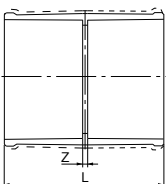
Unit:mm



Size	L	Z	R	D	Weight (PVC) kg/pc	Item No.		
						TS	HI	HT
250A × 150A	344	37	242	267	5.27	TSRB2F2	HIRB2F2	HTRB2F2
300A × 200A	374	44	288	318	7.28	TSRB3H2	HIRB3H2	HTRB3H2

## Coupling

Unit:mm

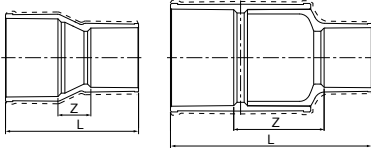


Size	L	Z	Weight (PVC) kg/pc	Item No.					
				TS	HI	HT	FRP reinforced type		
							TS	HI	HT
200A	300	10	3.4	TSS2H6K	HIS2H6K	HTS2H6K	FTSS2H	FHIS2H	FHTS2H
250A	384	34	6.9	TSS2F6K	HIS2F6K	HTS2F6K	FTSS2F	FHIS2F	FHTS2F
300A	408	38	9.1	TSS3H6K	HIS3H6K	HTS3H6K	FTSS3H	FHIS3H	FHTS3H

※Dashed Shape for Fiber Reinforced 1.0MPa fitting.

## Reducing Coupling

Unit:mm



●With Bushing

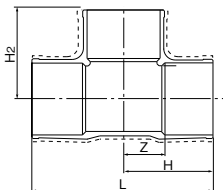
※Dashed Shape for Fiber Reinforced 1.0MPa fitting.

Size	L	Z	Weight (PVC kg/pc)	Item No.					
				TS	HI	HT	FRP reinforced type		
							TS	HI	HT
200A × 150A	368	91	3.9	TSS2H16	HIS2H16	HTS2H16	FTSS2H1	FHIS2H1	FHTS2H1
※250A × 150A	557	250	12.1	TSS2F26	HIS2F26	HTS2F26	FTSS2F2	FHIS2F2	FHTS2F2
250A × 200A	400	80	6.1	TSS2F16	HIS2F16	HTS2F16	FTSS2F1	FHIS2F1	FHTS2F1
※300A × 150A	605	288	35.1	TSS3H36	HIS3H36	HTS3H36	FTSS3H3	FHIS3H3	FHTS3H3
※300A × 200A	601	271	16.4	TSS3H26	HIS3H26	HTS3H26	FTSS3H2	FHIS3H2	FHTS3H2
300A × 250A	435	75	9.1	TSS3H16	HIS3H16	HTS3H16	FTSS3H1	FHIS3H1	FHTS3H1

※With Bushing

## Tee

Unit:mm

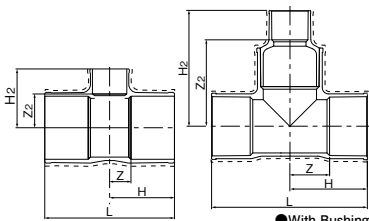


※Dashed Shape for Fiber Reinforced 1.0MPa fitting.

Size	H	H2	L	Z	Weight (PVC kg/pc)	Item No.					
						TS	HI	HT	FRP reinforced type		
									TS	HI	HT
200A	267	267	533	122	8.6	TST2H6K	HIT2H6K	HTT2H6K	FTST2H	FHIT2H	FHTT2H
250A	355	355	710	180	18.8	TST2F6K	HIT2F6K	HTT2F6K	FTST2F	FHIT2F	FHTT2F
300A	410	375	820	225	30.4	TST3H6K	HIT3H6K	HTT3H6K	FTST3H	FHIT3H	FHTT3H

## Reducing Tee

Unit:mm



●With Bushing

※Dashed Shape for Fiber Reinforced 1.0MPa fitting.

Size	H	Z	L	H2	Z2	Weight (PVC kg/pc)	Item No.					
							TS	HI	HT	FRP reinforced type		
										TS	HI	HT
200A × 75A	201	56	402	180	116	5.6	TST2H46	HIT2H46	HTT2H46	FTST2H4	FHIT2H4	FHTT2H4
200A × 100A	218	73	436	200	116	6.5	TST2H36	HIT2H36	HTT2H36	FTST2H3	FHIT2H3	FHTT2H3
200A × 150A	245	100	490	257	125	8.4	TST2H16	HIT2H16	HTT2H16	FTST2H1	FHIT2H1	FHTT2H1
250A × 75A	246	71	492	210	146	8.8	TST2F56	HIT2F56	HTT2F56	FTST2F5	FHIT2F5	FHTT2F5
250A × 100A	267	92	534	225	141	9.8	TST2F46	HIT2F46	HTT2F46	FTST2F4	FHIT2F4	FHTT2F4
※250A × 150A	355	180	710	524	392	24.1	TST2F26	HIT2F26	HTT2F26	FTST2F2	FHIT2F2	FHTT2F2
250A × 200A	335	160	670	335	190	16.1	TST2F16	HIT2F16	HTT2F16	FTST2F1	FHIT2F1	FHTT2F1
300A × 75A	260	75	520	236	172	12.9	TST3H66	HIT3H66	HTT3H66	FTST3H6	FHIT3H6	FHTT3H6
300A × 100A	266	81	532	257	173	13.4	TST3H56	HIT3H56	HTT3H56	FTST3H5	FHIT3H5	FHTT3H5
※300A × 150A	375	190	750	561	429	30.8	TST3H36	HIT3H36	HTT3H36	FTST3H3	FHIT3H3	FHTT3H3
※300A × 200A	410	225	820	599	454	37.7	TST3H26	HIT3H26	HTT3H26	FTST3H2	FHIT3H2	FHTT3H2
300A × 250A	375	190	750	392	217	25.5	TST3H16	HIT3H16	HTT3H16	FTST3H1	FHIT3H1	FHTT3H1

※With Bushing