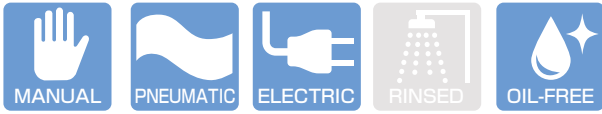


JIS ANSI/ASME/ASTM DIN/ISO



Operating Temperature(°C)

	Flange Type	Union Type
PVC	0 ~ 60	0 ~ 50
HT-CPVC	0 ~ 90	0 ~ 90
PP	0 ~ 90	
PVDF	0 ~ 120	0 ~ 100



Flange Type

True Union Type
(Thread Type·TS Socket Type and Butt Spigot Type)

ESLON DIAPHRAGM VALVE

Feature

- Excellent sealing performance with optimized diaphragm design even by low handle operating torque.
- Improved diaphragm in compression set steadily prevents leakage.
- Available customized version for the applications in high temperature.
- Visual indicator at the handle top for open-close position and prevention of over tightening.
- Drip-proof and dust-proof mechanism for prevention of entering water and dust in bonnet.
- Flat at the bottom of flange and insert nuts for prevention of tumbling and for better workability in plumbing.

⚠ Important Notes

- Fluid containing slurry, solid, sediment, or crystallized fluid might disable sealing.

Recommended Torque for Fastening Diaphragm

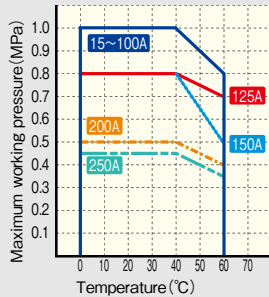
· Please periodically check tightening torque of the bolts for assembling diaphragm as the bolts might be loosen by temperature variation or compression set of diaphragm. Please re-tighten the bolt up to recommended torque shown in the table below in case the bolts loosen, but be careful not to over-tighten.

	Unit:N·m (kgf·cm)									
Size (A)	15~32	40	50	65	80	100	125	150	200	250
Recommended Torque	8 {80}	20 {200}	25 {250}	30 {300}	35 {350}	50 {500}	60 {600}	70 {700}	80 {800}	100 {1000}

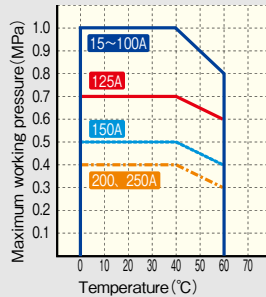
Maximum Working Pressure - Temperature Rating

Body material : PVC

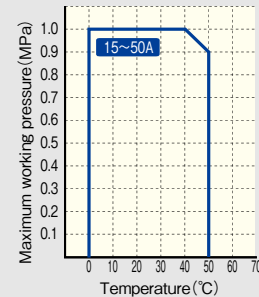
Diaphragm : EPDM • FKM
Connection : Flanged



Diaphragm : PTFE
Connection : Flanged

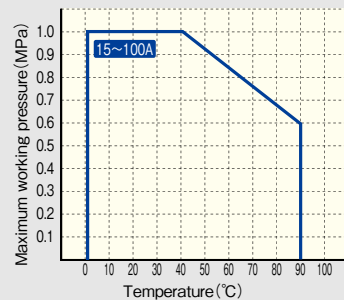


Diaphragm : EPDM • FKM • PTFE
Connection : TS Socket • Threaded

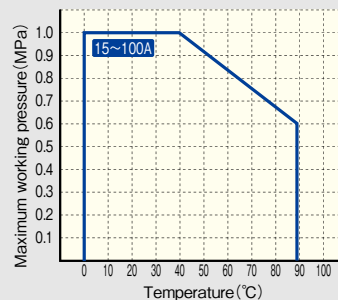


Body material : HT • CPVC

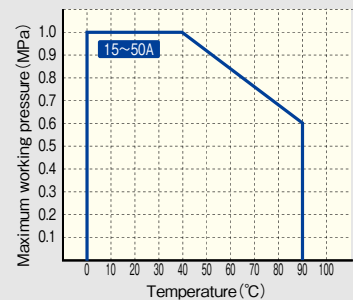
Diaphragm : EPDM • FKM
Connection : Flanged



Diaphragm : PTFE
Connection : Flanged

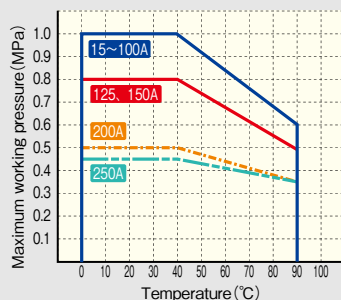


Diaphragm : EPDM • FKM • PTFE
Connection : TS Socket

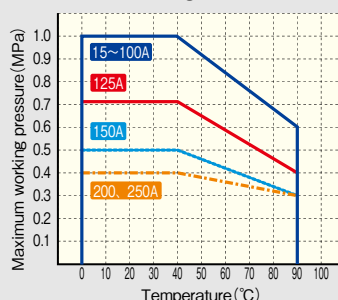


Body material : PP

Diaphragm : EPDM • FKM
Connection : Flanged

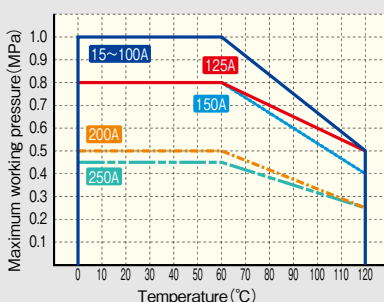


Diaphragm : PTFE
Connection : Flanged

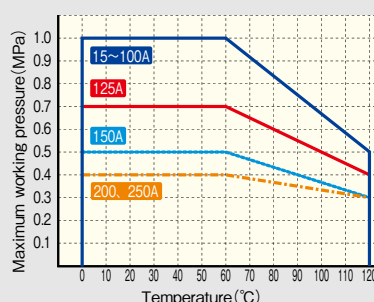


Body material : PVDF

Diaphragm : EPDM • FKM
Connection : Flanged



Diaphragm : PTFE
Connection : Flanged



Diaphragm : EPDM • FKM • PTFE
Connection : Butt Spigot • Threaded

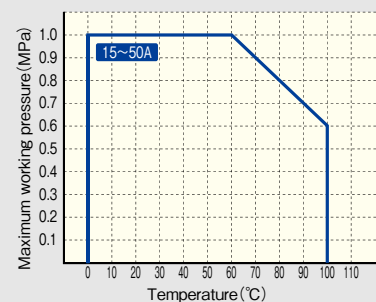
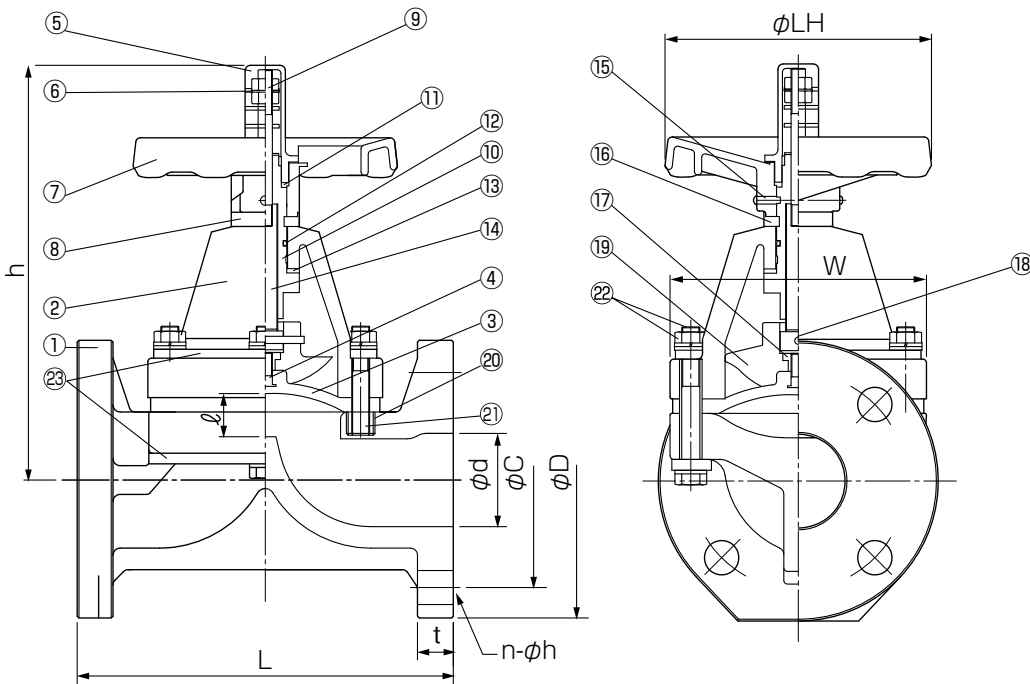


Figure (Flange Type)



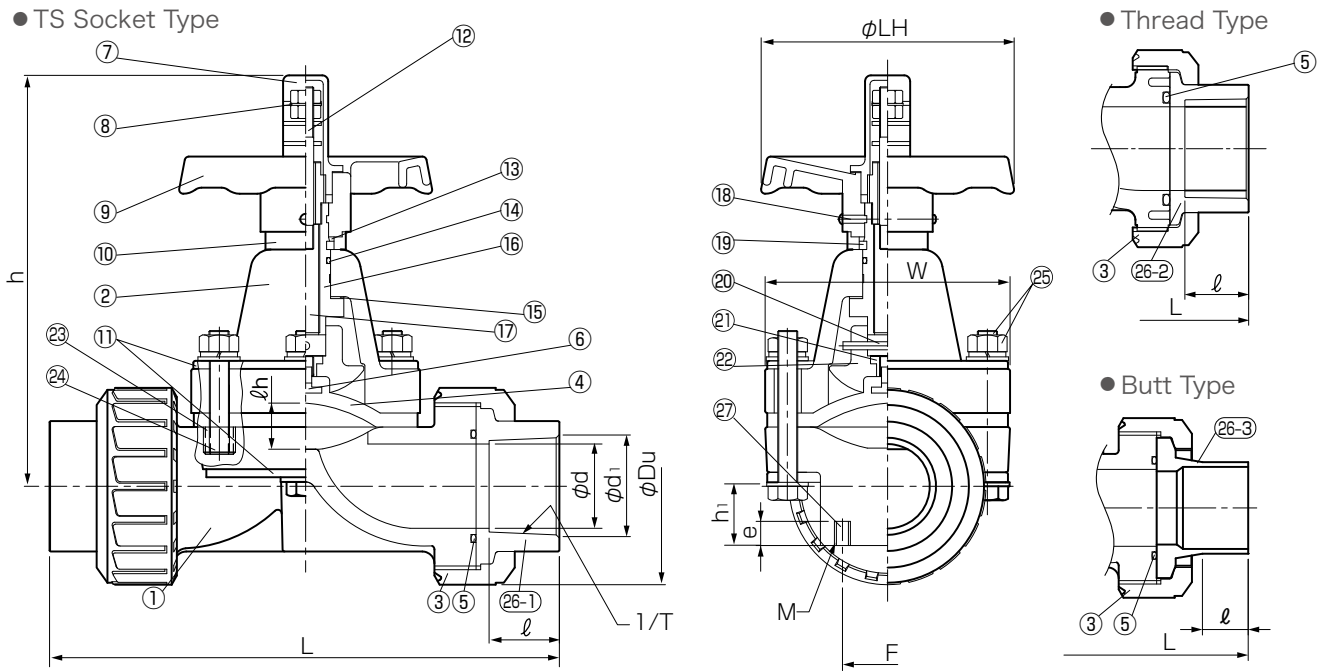
Parts List

No.	Part Name	QTY	Material/Color	No.	Part Name	QTY	Material/Color
1	Body	1	Body/Bonnet	11	Stem Packing	1	NBR
			●PVC/PVC	12	O-Ring	1	NBR
2	Bonnet	1	●HT/HT (JIS:Brown)	13	Thrust Washer	1	(15~80A)PTFE
			●CPVC/CPVC (ANSI·DIN:Gray)	14	Thrust Bearing	1	(100~250A)SUJ
3	Diaphragm	1	●PP/PP	15	Retaining Screw	2	SUS304(32~250A)
			●PVDF/GFPP	16	Retaining Ring	1	(~100A)PP,(125~150A)PVC
4	Diaphragm Stud Bolt	1	●PVDF/PVDF ^{*3}	17	Connecting Nut	1	C3604 ^{*1}
			●EPDM	18	Pin	1	SUS304 ^{*1}
5	Indicator Cover	1	●FKM	19	Compressor	1	(15~150A)GF-PP,(200,250A)FC200
			●PTFE+EPDM	20	Insert Nut	-	C3604(PVDF15-100A:SUS304)
6	Indicator	1	●PTFE+PVDF+EPDM	21	Stud Bolt	-	SUS304
				22	Hexagonal Bolt, Nut	-	SUS304
7	Handle	1	ABS	23	Reinforcing Plate ^{*2}	1	(15~50, 200, 250A) SUS304 (65~150A)SS400 Epoxy Resin Coated
8	Collar	1	PE				
9	Indicator Stud Bolt	1	SUS304	*1 Titanium Palladium is available on request.			
10	Stem Sleeve	1	C3604	*2 Applied to PP, HT, CPVC, and PVDF			
				*3 15~150A Only			

Size

Size		φd	L	h	φLH	W	ℓ	FLANGE																Weight(kg/unit)			
A	B							JIS10K				ANSI				DIN				PVC	HT (CPVC)	PP	PVDF				
								φD	φC	n-φh	t	φD	φC	n-φh	t	φD	φC	n-φh	t								
15	1/2	16	110	122	80	76	10	95	70	4-15	14	90	60.5	4-16	11	95	65	4-14	14	0.9	1.1	0.8	1.1				
20	3/4	20	120	134	80	82	12	100	75	4-15	14	100	70	4-16	13	105	75	4-14	14	1.0	1.3	1.0	1.3				
25	1	25	130	145	80	90	15	125	90	4-19	14	110	79.5	4-16	14	115	85	4-14	14	1.4	1.7	1.3	1.7				
32	1 1/4	32	142	145	80	90	15	135	100	4-19	16	117	89	4-16	15.7	140	100	4-18	15	1.7	1.8	1.6	2.1				
40	1 1/2	41	180	205	125	122	20	140	105	4-19	16	127	98.5	4-16	17	150	110	4-18	16	2.6	3.3	2.5	3.4				
50	2	52	210	233	148	142	27	155	120	4-19	20	155	120.5	4-20	19	165	125	4-18	18	3.6	4.5	3.4	4.8				
65	2 1/2	67	250	291	210	170	36	175	140	4-19	22	175	139.5	4-20	22	185	145	4-18	18	6.2	7.7	5.9	8.4				
80	3	80	280	322	210	202	37	185	150	8-19	22	190	152.5	4-20	22	200	160	8-18	20	8.2	9.6	7.9	11.2				
100	4	100	340	392	260	255	61	210	175	8-19	24	230	190.5	8-20	24	220	180	8-18	20	13.8	18.3	15.4	21.1				
125	5	125	410	435	350	320	61	250	210	8-23	24	254	216	8-23	24	250	210	8-18	22	21.8	-	20.0	26.0				
150	6	150	480	490	350	375	70	280	240	8-23	24	280	241.5	8-23	25	285	240	8-22	22	26.3	-	25.5	36.0				
200	8	198	570	632	410	416	96	330	290	12-23	29	343	298.5	8-23	28	340	295	8-22	29	51.0	-	44.0	61.0				
250	10	248	680	780	555	540	132	400	355	12-25	31	406	362	12-25	31	395	350	12-22	26	93.0	-	77.0	108.0				

Figure (TS Socket Type · Thread Type · Butt Type)



Parts List

No.	Part Name	QTY	Material/Color	No.	Part Name	QTY	Material/Color
1	Body	1	Body / Bonnet ● PVC / PVC ● HT / HT (JIS : Brown)	13	Stem Packing	1	NBR
2	Bonnet	1	● CPVC / CPVC (ANSI·DIN : Gray)	14	O-Ring	1	NBR
3	Union Nut	2	● PVDF / GFPP ● PVDF / PVDF	15	Thrust Washer	1	PTFE
4	Diaphragm	1	● EPDM ● FKM ● PTFE+EPDM ● PTFE+PVDF+EPDM	16	Stem Sleeve	1	C3604
5	O-Ring	2	● EPDM ● FKM	17	Stem Spindle	1	C3604
6	Diaphragm Stud Bolt	1	SUS304	18	Retaining Screw	2	SUS304 (32 ~ 50A)
7	Indicator Cover	1	PC	19	Retaining Ring	1	PP
8	Indicator	1	SUS304	20	Pin	1	SUS304 *1
9	Handle	1	ABS	21	Connecting Nut	1	C3604 *1
10	Collar	1	PE	22	Compressor	1	GF-PP
11	Reinforcing Plate*2	1	SUS304	23	Insert Nut	-	C3604
12	Indicator Stud Bolt	1	SUS304	24	Stud Bolt	-	SUS304
				25	Hexagonal Bolt, Nut	-	SUS304
				26-1	TS Socket	2	● PVC ● HT ● CPVC
				26-2	Threaded socket	2	● PVC ● PVDF
				26-3	Butt Spigot Type	2	● PP ● PVDF ● PE
				26-4	Socket welding	2	PP
				27	Fixing Insert Nut	2	C3604

*1 Titanium Palladium is available on request. *2 Applied to PP, HT, CPVC, and PVDF

Size

Size		ϕd	h	h1	ϕLH	W	ϕDu	ℓh	Fixing Insert Nut		Weight(kg/unit)				
A	B								X	Mxe	PVC		HT,CPVC		PVDF
										Socket	Thread	Socket	Thread	Spigot	
15	1/2	15	123	15	80	76	49	10	25	M6x12	0.7	0.7	0.8	0.9	0.9
20	3/4	20	134	18	80	82	59	12	25	M6x12	0.8	0.8	1.0	1.0	1.0
25	1	25	146	23	80	90	67	15	25	M6x12	1.1	1.1	1.2	1.4	1.4
32	1 1/4	31	146	23	80	90	81	15	25	M6x12	1.2	1.2	1.3	1.6	1.5
40	1 1/2	40	209	32	125	122	98	20	45	M8x12	2.7	2.7	3.4	3.7	3.7
50	2	50	234	37	148	148	120	27	45	M8x12	3.6	3.6	4.3	5.0	5.0

Size		TS Socket											
A	B	JIS				ASTM				DIN			
		L	ϕd_1	1/T	ℓ	L	ϕd_1	1/T	ℓ	L	ϕd_1	1/T	ℓ
15	1/2	144	22.3	1/37	22	137	21.54	1/72	22.22	126	20.3	1/65	16
20	3/4	172	26.3	1/42	25	158	26.87	1/85	25.4	146	25.3	1/80	19
25	1	187	32.3	1/43	29	177	33.65	1/75	28.58	165	32.3	1/95	22
32	1 1/4	210	38.4	1/37	32	190	42.42	1/84	31.75	179	40.3	1/115	26
40	1 1/2	262	48.5	1/38	35	258	48.56	1/78	34.93	247	50.3	1/140	31
50	2	298	60.6	1/34	38	283	60.63	1/83	38.1	284	63.3	1/175	38

Size		Thread						Butt Spigot				Socket welding			
A	B	JIS(Rc)		ANSI(NPT)		DIN(Rp)		DIN		DIN		DIN			
		PVC	PVDF	PVC,PVDF	PVC,PVDF	PP,PVDF	PE	PP	PP						
		L	ℓ	L	ℓ	L	ℓ	L	ℓ	L	ℓ	L	ℓ		
15	1/2	133	18	134	20	133	18	133	18	176	30	246	65	137	12
20	3/4	157	18	157	22	157	18	157	18	189	24	259	65	153	13
25	1	173	23	180	25	173	23	173	23	203	24	283	70	171	14.5
32	1 1/4	188	23	191	25	188	23	188	23	210	25	301	75	183	18
40	1 1/2	248	25	254	28	248	25	248	25	272	24	376	80	245	16
50	2	280	30	290	30	280	30	280	30	306	28	419	90	278	20