

Operating Temperature(°C)

PVC 0 ~ 50



ESLON LOCK BALL VALVE

Feature

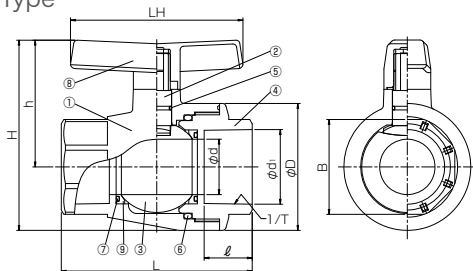
- Usable even in the condition with vibration or thermal expansion as unified body with connection end.
- Six colors of handle enable easier management of application and fluid classification.

⚠ Important Notes

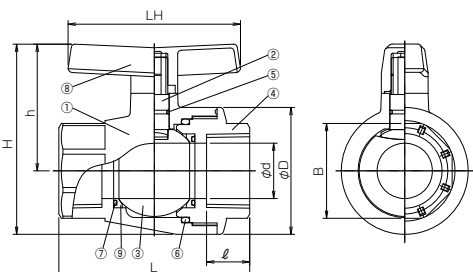
- Gasifying, volatile, or evaporating fluid such as hydrogen peroxide and sodium hypochlorite might rise inner pressure of valve and burst the valve. Please contact us concerning such risk.
- Do not use for the fluid containing slurry, solid, sediment, or crystallized fluid. Or for those kinds of fluid, strainer should be used in upstream.

Figure (TS Socket Type · Thread Type)

● TS Socket Type

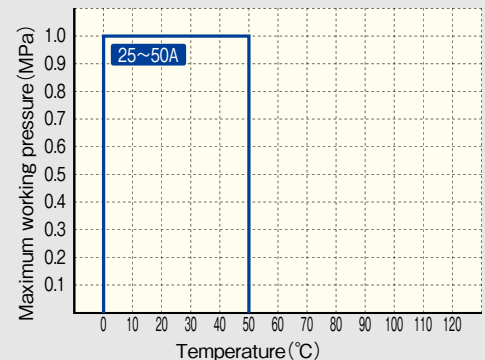


● Thread Type



Maximum Working Pressure -Temperature Rating

Body material : PVC



Parts List

No.	Part Name	QTY	Material
1	Body	1	PVC
2	Stem	1	PVC
3	Ball	1	PVC
4	Body Cap	1	PVC
5	Stem O-Ring	1	● EPDM
6	Body O-Ring	1	● FKM
7	BackUp O-Ring	2	● FKM
8	Handle	1	ABS
9	Ball Seat	2	PTFE

Size

TS Socket · Thread

Unit : mm

Size		d	L	H	h	φ D	LH	B	TS Socket			Thread		Weight(kg/unit)	
A	B								d1	1/T	ℓ	Rc	ℓ	TS Socket	Thread
25	1	25	113.0	96	64.0	66.0	95	46	32.3	1/43	29.0	Rc 1	23	0.3	0.3
32	1 1/4	29	114.0	119	82.0	74.0	110	60(54)	38.4	1/37	32.0	Rc 1 1/4	28	0.4	0.4
40	1 1/2	35	130.0	133	91.0	85.0	110	65	48.5	1/38	35.0	Rc 1 1/2	30	0.6	0.6
50	2	45	155.0	154	103.0	103.0	140	77	60.6	1/35	39.0	Rc 2	35	1.0	1.0

* The octagonal part of 32A differs by the Body and Bodycap side. The value of body side is indicated by () .