

Operating Temperature(°C)

PVC 0 ~ 50



6A

13, 15A

ESLON MINI BALL VALVE

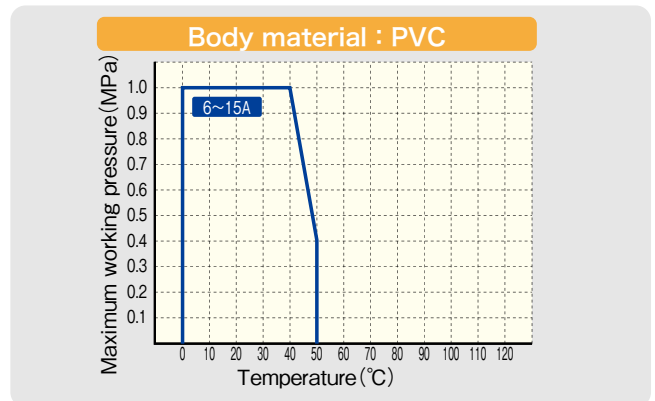
Feature

- Low stem torque and reliable sealing performance.
- Position indicator at handle enable easier flow rate regulation.
- Five types of end connections and their combination of both end connection available.

⚠ Important Notes

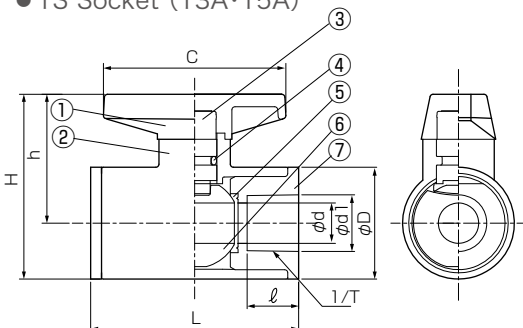
- Gasifying, volatile, or evaporating fluid such as hydrogen peroxide and sodium hypochlorite might rise inner pressure of valve and burst the valve. Please contact us concerning such risk.
- Fluid containing slurry, solid, sediment, or crystallized fluid might disable sealing.

Maximum Working Pressure - Temperature Rating

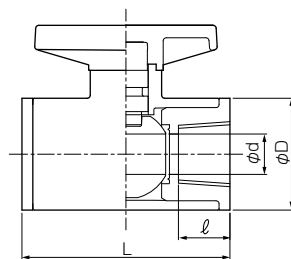


Figure, Parts List, Size (TS Socket Type and Thread Type, 13A · 15A)

● TS Socket (13A·15A)



● Thread (15A)



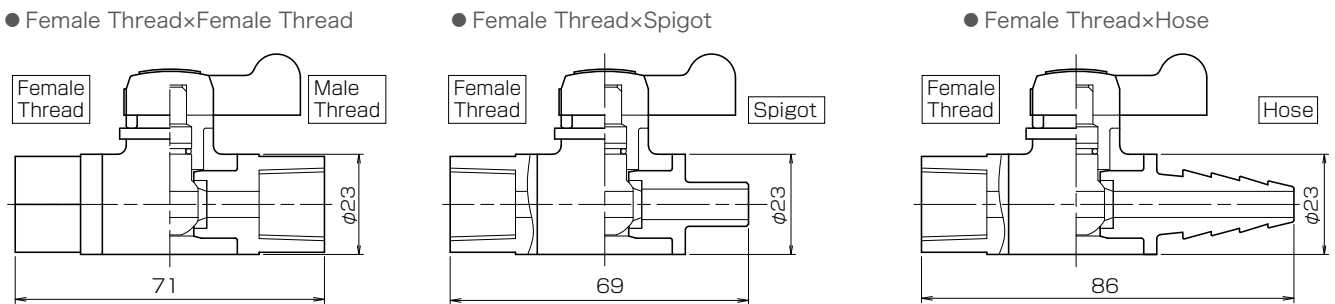
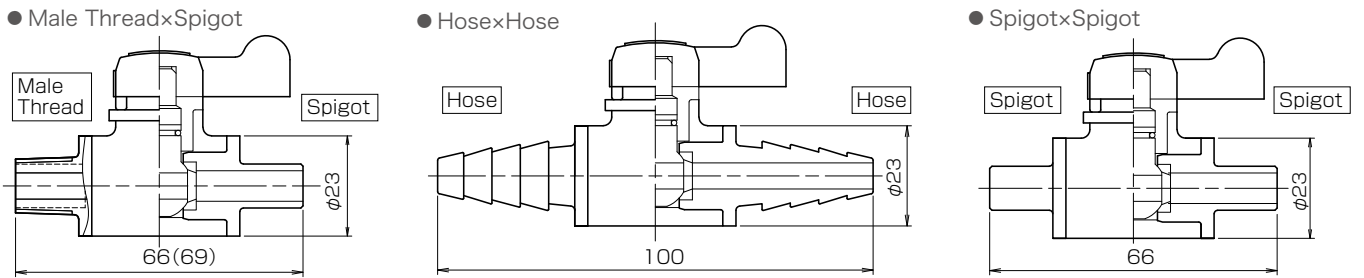
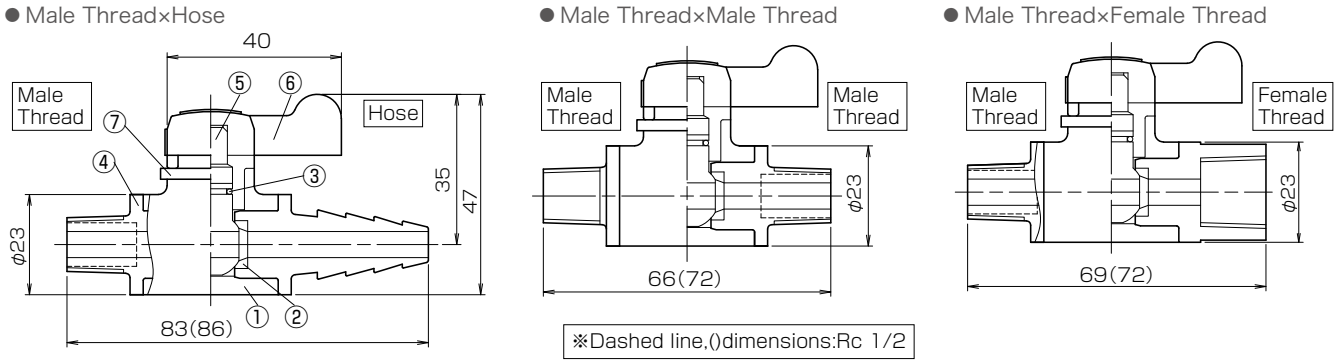
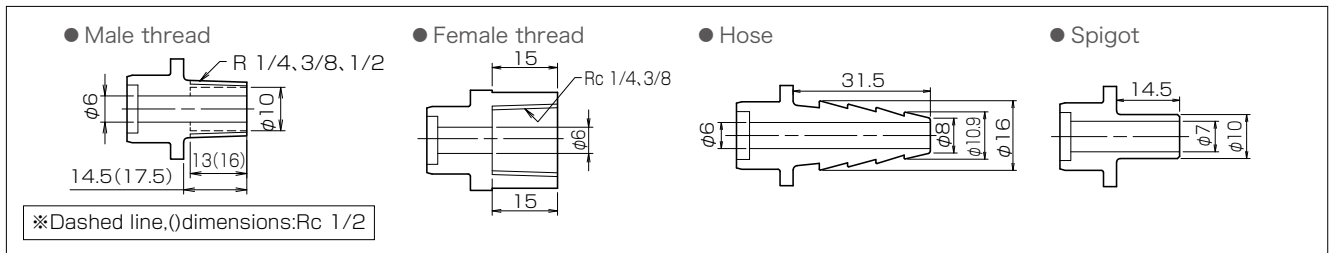
(13A, 15A)

No.	Part Name	Q'TY	Material
1	Handle	1	ABS
2	Body	1	PVC
3	Stem	1	PVC
4	O-Ring	1	● EPDM ● FKM
5	Ball Seat	2	PTFE
6	Ball	1	PVC
7	Socket	2	PVC

Unit : mm

Size		d	L	H	h	D	C	TS Socket				Thread		
A	B							d ₁	1/T	ℓ	Weight (g/unit)	Rc	ℓ	Weight (g/unit)
13	3/8	13	67	60	42	35	60	18.3	1/33	16.5	90	—	—	—
15	1/2	13	67	60	42	35	60	22.3	1/33	16.5	80	Rc1/2	16	90

Figure (6A)



Combination of End Connection, Weight

Size	Part Name	Weight(g/unit)
6A	Male Thread x Male Thread	30
	Male Thread x Female Thread	40
	Male Thread x Hose	40
	Male Thread x Spigot	30
	Female Thread x Female Thread	40
	Female Thread x Hose	40
	Female Thread x Spigot	40
	Hose x Hose	40
	Spigot x Spigot	30

Parts List
(6A)

No.	Part Name	Q'TY	Material
1	Body	1	PVC
2	Ball Seat	2	● EPDM ● FKM
3	O-ring	1	● EPDM ● FKM
4	Socket	1	PVC
5	Ball	1	PVC
6	Handle	1	ABS
7	Stem Stopper	1	PVC