

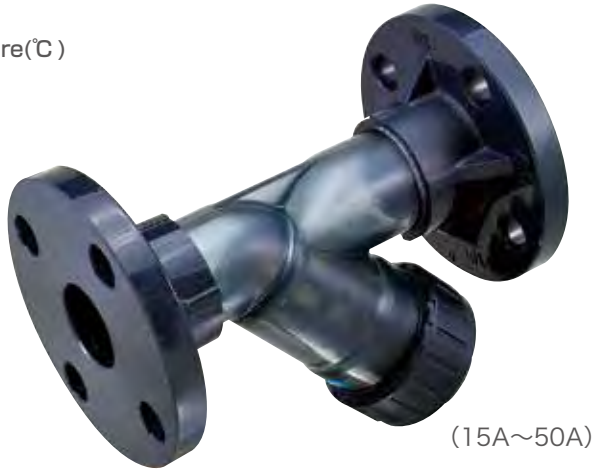
JIS ANSI/ASME/ASTM DIN

※ For size 65-100A, only JIS type is available.



Operating Temperature(°C)

PVC 0 ~ 50



(15A~50A)



(65A~100A)

## ESLON STRAINER

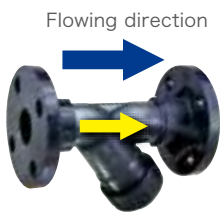
### Feature

- Transparency body enables easy monitoring medium and screen (15-50A)
- Easy maintenance such as exchange or cleaning up screen by detaching cap nut.
- Superior chemical & pressure resistance and durability.

### ⚠ Important Notes

- Install strainer as bonnet down flowing direction and the arrow marking on body in the same direction.

【15~50A】



Horizontal piping



Vertical piping

【65~100A】



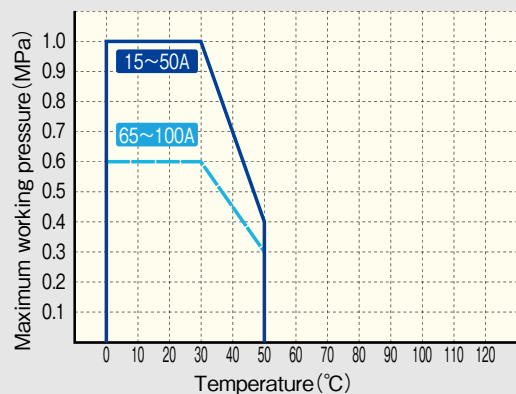
Horizontal piping



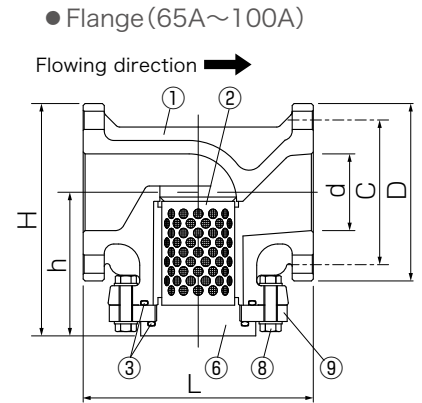
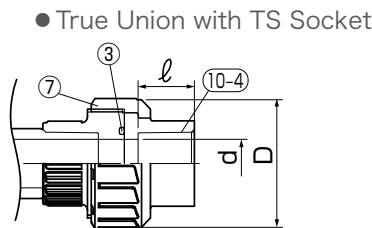
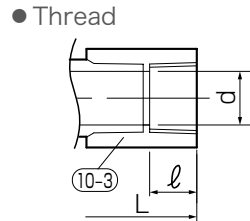
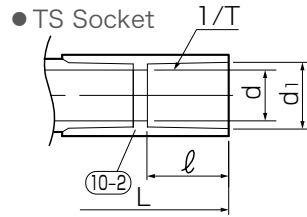
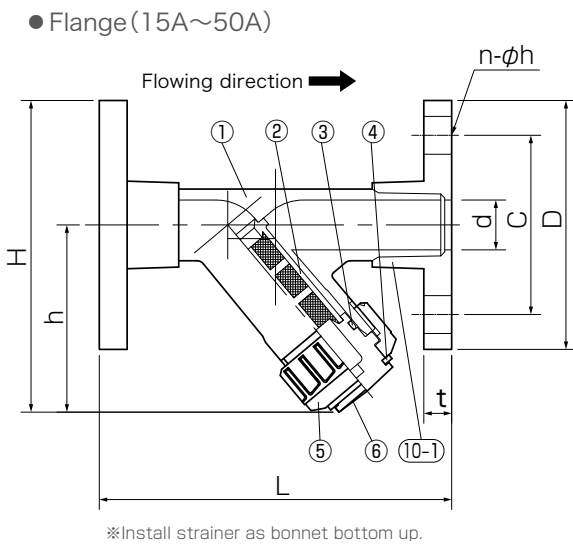
Vertical piping

### Maximum Working Pressure - Temperature Rating

Body material : PVC



Figure(Flange Type·TS Socket Type·Thread Type· True Union with TS Socket)



Parts List

No.	Part Name	QTY	材 質
1	Body	1	PVC
2	Screen holder	1	PVC
3	O-ring	15~50A	● EPDM
		Open ring	● FKM
4	Open Ring	1	PVC
5	Cap nut	1	PVC
6	Bonnet	1	PVC
7	Union nut	2	PVC
8	Hexagon bolt,nut	8	SUS304
9	Valve lid	1	PVC
10-1	Flange end	2	PVC
10-2	TS socket	2	PVC
10-3	Threaded socket	2	PVC
10-4	Union TS Socket	2	PVC

Screen Type and Mesh Size

Mesh Size	10	20	30	40	50	60	70	80	100	120
15A-20A	PVDC	-	-	○	○	○	-	-	-	-
	SUS304	○	○	○	○	○	○	○	○	-
	SUS316	-	-	-	-	-	-	-	-	○
25A~100A	PVDC	○	○	○	○	○	-	-	-	-
	SUS304	○	○	○	○	○	○	○	○	-
	SUS316	-	-	-	-	-	-	-	-	○
Clear Opening	PVDC	1.62	0.98	0.54	0.42	0.32	0.26	-	-	-
	SUS	2.07	0.93	0.57	0.42	0.33	0.28	0.24	0.20	0.15

※ Standard Mesh : PVDC30#

Size

Flange Type

Size		d	L	h	Flange												Weight (kg/unit)
A	B				JIS10K				ANSI				DIN				
					φ D	φ C	n-φh	t	φ D	φ C	n-φh	t	φ D	φ C	n-φh	t	
15	1/2	15	150	71	95	70	4-15	14	89.0	60.5	4-16	14	95	65	4-14	14	0.4
20	3/4	20	158	81	100	75	4-15	14	98.0	70.0	4-16	14	105	75	4-14	14	0.5
25	1	25	177	94	125	90	4-19	14	108.0	79.5	4-16	14	115	85	4-16	14	0.7
32	1 1/4	30	197	94	135	100	4-19	16	117.5	89.0	4-16	16	140	100	4-18	16	1.0
40	1 1/2	40	220	118	140	105	4-19	16	127.0	98.5	4-16	16	150	110	4-18	16	1.2
50	2	50	264	137	155	120	4-19	20	152.0	120.5	4-20	20	165	125	4-18	20	2.0
65	2 1/2	65	220	153	175	140	4-19	22	-	-	-	-	-	-	-	-	3.6
80	3	80	240	161	185	150	8-19	22	-	-	-	-	-	-	-	-	4.4
100	4	100	290	178	210	175	8-19	24	-	-	-	-	-	-	-	-	6.8

TS Socket Type · Thread Type

Size		d	h	TS socket				Thread		Union TS Socket		Weight(kg/unit)		
A	B			JIS10K				JIS10K		JIS10K		TS socket	Thread	Union TS socket
				L	φ d1	1/T	ℓ	L	ℓ	L	ℓ			
15	1/2	15	71	190	22.4	1/34	30	153	16	201	22	0.2	0.2	0.3
20	3/4	20	81	210	26.5	1/34	35	176	19	214	25	0.2	0.2	0.4
25	1	25	94	243	32.6	1/34	40	200	22	254	29	0.4	0.4	0.6
32	1 1/4	32	94	274	38.6	1/34	44	232	26	287	32	0.6	0.6	0.8
40	1 1/2	40	118	332	48.7	1/37	55	271	31	301	35	0.9	0.9	1.3
50	2	50	137	390	60.8	1/37	63	321	38	370	38	1.4	1.4	2.1

\*ASTM,ANSI,DIN:Please contact us